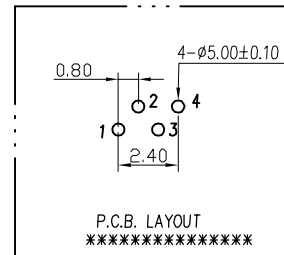
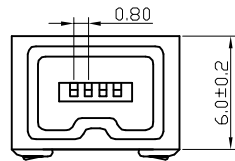
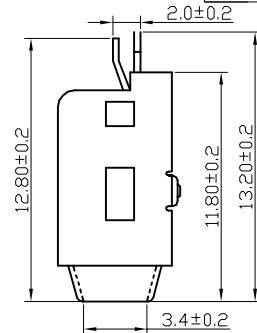
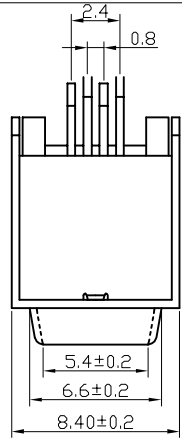


THE INFORMATION CONTAINED IN THIS DOCUMENT IS PROPRIETARY TO Y-S ELECTRONIC, ANY REPRODUCTION IN PART OR WHOLE WITHOUT PRIOR WRITTEN APPROVAL OR AUTHORIZATION OF Y-S ELECTRONIC IS STRICTLY PROHIBITED.

RoHS COMPLIANT

REVISIONS				
REV	ECN NO.	DESCRIPTION	APPROVED BY	DATE



IEEE 1394-4PIN(F)180° Y-S P/N:187b-04201121

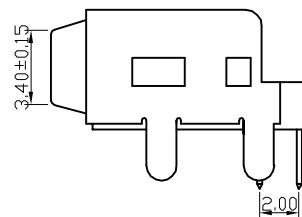
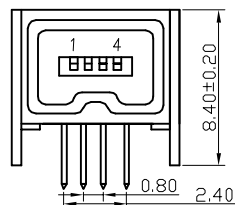
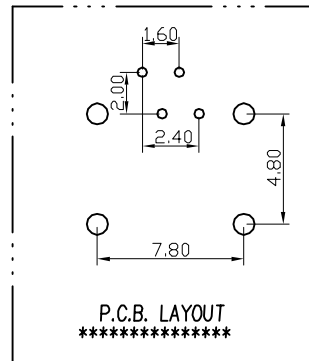
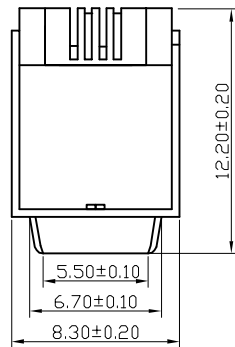
Specification:

- 1.Material:
 - 1.1 Insulator:UL 94-V0 rated.
 - 1.2 Contact: Phosphor bronze,t=0.30mm.
 - 1.3 Shell: Brass,up t=0.20mm, down t=0.40mm.
- 2.Specification:
 - 2.1 Current rating: 1 A Max.
 - 2.2 Dielectric withstanding voltage: 500 V(ac) for 1 minute.
 - 2.3 Contact resistance: 30 mW Max.
 - 2.4 Insulation resistance: 1000 MW Min at DC 500V.
 - 2.5 Total mating force: 3.0 Kgf Max.
 - 2.6 Total unmating force: 0.5 Kgf Min.
 - 2.7 Temperature range:-40°C to+60°C.

Ordering Information

187b - $\frac{XX}{a} \frac{X}{b} \frac{X}{c} \frac{X}{d} \frac{X}{e} \frac{X}{f} \frac{X}{g}$

- | | |
|--|---|
| <p>a. No. Of Pins</p> <p>04: 04 positions
06: 06 positions
09: 09 positions</p> <p>b. Contact Type</p> <p>1: Male
2: Female</p> <p>c. Contact Plating</p> <p>0: Gold flash selective gold
1: 5u" selective gold over 50u" nickel
2: 10u" selective gold over 50u" nickel
3: 15u" selective gold over 50u" nickel
4: 30u" selective gold over 50u" nickel</p> <p>d. Terminal Type</p> <p>1: 180d
2: 90d
3: SMT type</p> | <p>e. Shell Plating</p> <p>1: Nickel
2: Tin
2: Gold flash</p> <p>f. Insulator Color</p> <p>1: White
2: Black(PBT)
3: Black(High Temperature)</p> <p>g. Type</p> <p>1: Dip type
2: SMT type
3: 正向 90D DIP
4: 侧向 90D DIP
5: 侧向 90D DIP加弹片
6: ASSEMBLY SR DD#4.2</p> |
|--|---|



IEEE 1394-4PIN(F) 90° Y-S P/N:187b-04202121

DO NOT SCALE DRAWING

DIMENSIONS: □ MM [INCH] □ INCH [mm] ☒ MM ONLY	CAD GENERATED DRAWING, DO NOT MANUALLY UPDATE
UNLESS OTHERWISE SPECIFIED, GENERAL TOLERANCE: DECIMALS X: ±0.38 [0.015] X*: ±3° X: ±0.25 [0.010] X*: ±10° XX: ±0.13 [0.005]	CHECKED BY AND DATE JUSTIN XING 06-13-06
MATERIAL	APPROVED BY AND DATE KING CHIU 06-13-06
FINISH	THIRD ANGLE PROJECTION
SCALE: 4:1	SIZE: A3

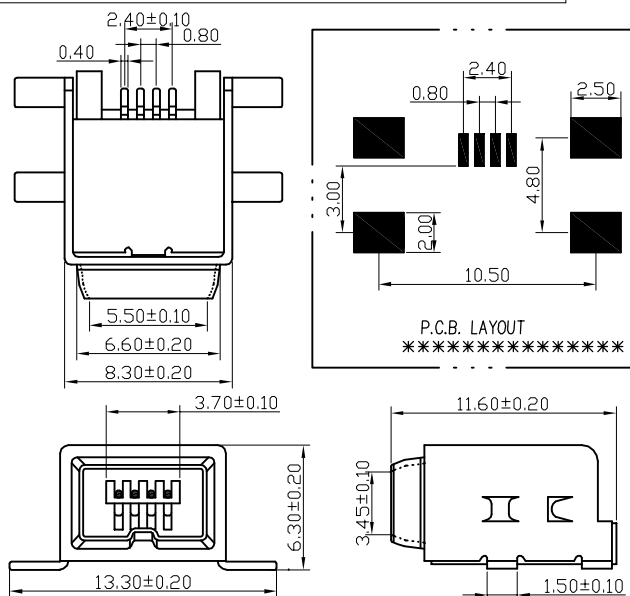
Y-S ELECTRONIC CO., LTD.
 No. 101, Sec. 1, Long-An Street, Lu-Chu, Taoyuan, Taiwan, R.O.C.
 TEL: +886-3-3609819 FAX: +886-3-3609817

TITLE	
187b SERIES IEEE 1394 CONNECTOR P.C.B. TYPE	
DRAWING NO.	REV
187b-042XXXX1	A
FILE NO.	SHEET 1 OF 6

THE INFORMATION CONTAINED IN THIS DOCUMENT IS PROPRIETARY TO Y-S ELECTRONIC. ANY REPRODUCTION IN PART OR WHOLE WITHOUT PRIOR WRITTEN APPROVAL OR AUTHORIZATION OF Y-S ELECTRONIC IS STRICTLY PROHIBITED.

RoHS COMPLIANT

REVISIONS				
REV	ECN NO.	DESCRIPTION	APPROVED BY	DATE



Specification:

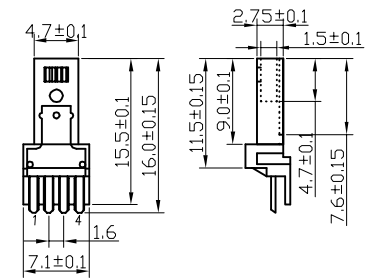
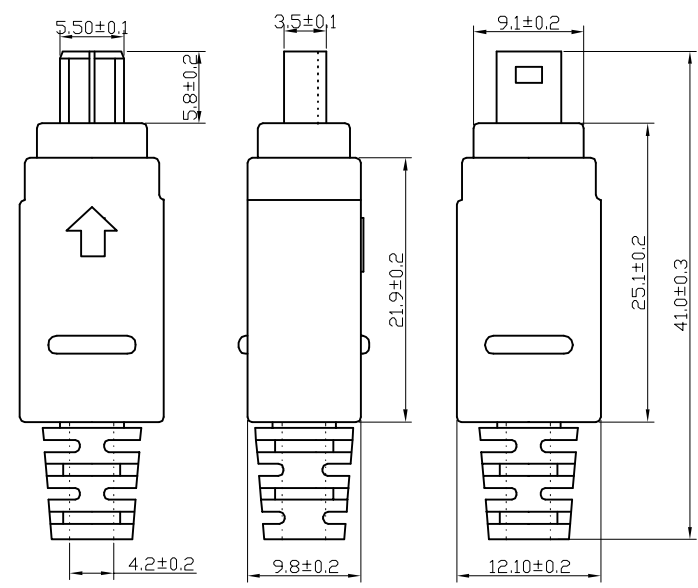
- 1.Material:
 1.1 Insulator:UL 94-V0 rated.
 1.2 Contact: Phosphor bronze,t=0.30mm.
 1.3 Shell: Brass,up t=0.20mm, down t=0.40mm.
- 2.Specification:
 2.1 Current rating: 1 A Max.
 2.2 Dielectric withstanding voltage: 500 V(ac) for 1 minute.
 2.3 Contact resistance: 30 mW Max.
 2.4 Insulation resistance: 1000 MW Min at DC 500V.
 2.5 Total mating force: 3.0 Kgf Max.
 2.6 Total unmating force: 0.5 Kgf Min.
 2.7 Temperature range:-40°C to+60°C.

Ordering Information

187b - $\frac{XX}{a} \frac{X}{b} \frac{X}{c} \frac{X}{d} \frac{X}{e} \frac{X}{f} \frac{X}{g}$

IEEE 1394-4PINK<F> S.M.T(SCALE: 4 : 1) Y-S P/N:187b-04203132

- a. No. Of Pins
 04: 04 positions
 06: 06 positions
 09: 09 positions
- b. Contact Type
 1: Male
 2: Female
- c. Contact Plating
 0: Gold flash selective gold
 1: 50μ selective gold over 50μ nickel
 2: 10μ selective gold over 50μ nickel
 3: 15μ selective gold over 50μ nickel
 4: 30μ selective gold over 50μ nickel
- d. Terminal Type
 1: 180d
 2: 90d
 3: SMT type
- e. Shell Plating
 1: Nickel
 2: Tin
 3: Gold flash
- f. Insulator Color
 1: White
 2: Black(PBT)
 3: Black(High Temperature)
- g. Type
 1: Dip type
 2: SMT type
 3: 正向 90D DIP
 4: 侧向 90D DIP
 5: 侧向 90D DIP 加弹片
 6: ASSEMBLY SR DD#4.2



IEEE 1394-4PINKM) ASSEMBLY SR DD#4.2 (SCALE: 2 : 1) Y-S P/N:187b-04101126

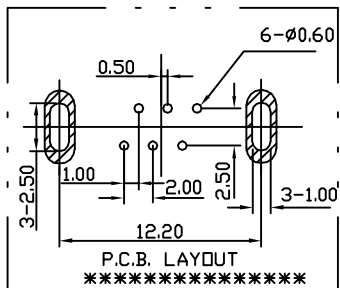
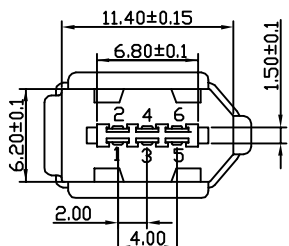
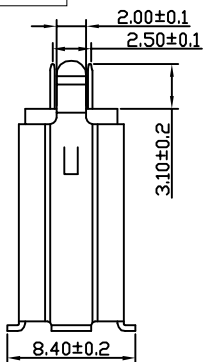
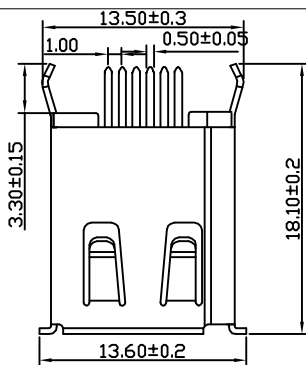
DO NOT SCALE DRAWING

DIMENSIONS: <input type="checkbox"/> MM [INCH] <input type="checkbox"/> INCH [mm] <input checked="" type="checkbox"/> MM ONLY	CAD GENERATED DRAWING, DO NOT MANUALLY UPDATE		Y-S ELECTRONIC CO., LTD. No. 101, Sec. 1, Long-An Street, Lu-Chu, Taoyuan, Taiwan, R.O.C. TEL: +886-3-3609819 FAX: +886-3-3609817
	UNLESS OTHERWISE SPECIFIED, GENERAL TOLERANCE: DECIMALS ANGLES X: ±0.38 [0.015] X°: ±3° .X: ±0.25 [0.010] .X°: ±1.0° .XX: ±0.13 [0.005]		
MATERIAL FINISH	CHECKED BY AND DATE JUSTIN XING 06-13-06 APPROVED BY AND DATE KING CHIU 06-13-06 THIRD ANGLE PROJECTION		TITLE 187b SERIES IEEE 1394 CONNECTOR P.C.B. TYPE
	SCALE: NONE SIZE: A3		
DRAWING NO. 187b-04XXXXXX		REV A	
FILE NO.		SHEET 2 OF 6	

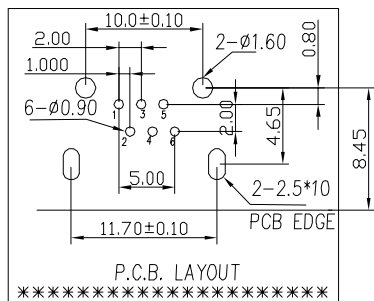
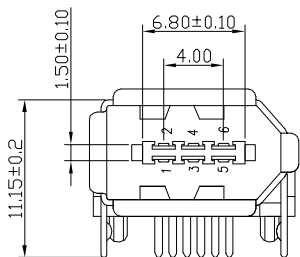
THE INFORMATION CONTAINED IN THIS DOCUMENT IS PROPRIETARY TO Y-S ELECTRONIC. ANY REPRODUCTION IN PART OR WHOLE WITHOUT PRIOR WRITTEN APPROVAL OR AUTHORIZATION OF Y-S ELECTRONIC IS STRICTLY PROHIBITED.

RoHS COMPLIANT

REVISIONS				
REV	ECN NO.	DESCRIPTION	APPROVED BY	DATE



IEEE 1394-6PIN(F)180°
Y-S P/N:187b-06201121

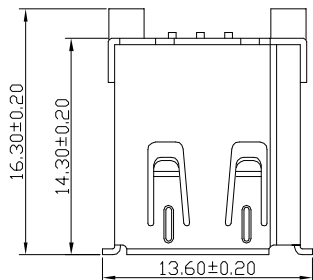


Ordering Information

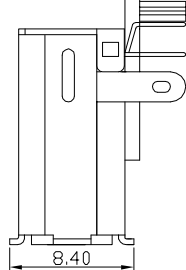
187b - $\frac{XX}{a} \frac{X}{b} \frac{X}{c} \frac{X}{d} \frac{X}{e} \frac{X}{f} \frac{X}{g}$

- a. No. Of Pins
 - 04: 04 positions
 - 06: 06 positions
 - 09: 09 positions
- b. Contact Type
 - 1: Male
 - 2: Female
- c. Contact Plating
 - 0: Gold flash selective gold
 - 1: 5u" selective gold over 50u" nickel
 - 2: 10u" selective gold over 50u" nickel
 - 3: 15u" selective gold over 50u" nickel
 - 4: 30u" selective gold over 50u" nickel
- d. Terminal Type
 - 1: 180d
 - 2: 90d
 - 3: SMT type
- e. Shell Plating
 - 1: Nickel
 - 2: Tin
 - 2: Gold flash
- f. Insulator Color
 - 1: White
 - 2: Black(PBT)
 - 3: Black(High Temperature)
- g. Type
 - 1: Dip type
 - 2: SMT type
 - 3: 正向 90D DIP
 - 4: 侧向 90D DIP
 - 5: 侧向 90D DIP 加弹片
 - 6: ASSEMBLY SR DD#4.2

DO NOT SCALE DRAWING



IEEE 1394-6PIN(F)正向90° Y-S P/N:187b-06202131



DIMENSIONS: □ MM [INCH] □ INCH [mm] ☒ MM ONLY	CAD GENERATED DRAWING, DO NOT MANUALLY UPDATE
UNLESS OTHERWISE SPECIFIED, GENERAL TOLERANCE: DECIMALS X: ±0.38 [0.015] X*: ±3° X: ±0.25 [0.010] X*: ±1.0° XX: ±0.13 [0.005]	DRAWN BY AND DATE JUSTIN XING 06-13-06 CHECKED BY AND DATE JUSTIN XING 06-13-06 APPROVED BY AND DATE KING CHIU 06-13-06 THIRD ANGLE PROJECTION
MATERIAL	
FINISH	SCALE: 3:1 SIZE: A3



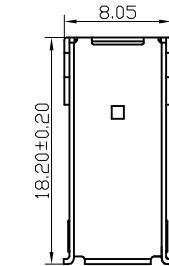
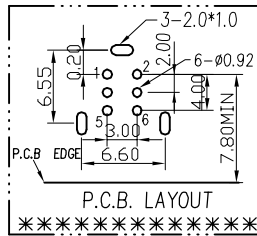
Y-S ELECTRONIC CO., LTD.
No. 101, Sec. 1, Long-An Street, Lu-Chu, Taoyuan, Taiwan, R.O.C.
TEL: +886-3-3609819 FAX: +886-3-3609817

TITLE	187b SERIES IEEE 1394 CONNECTOR P.C.B. TYPE
DRAWING NO.	187b-062XXXXX
REV	A
FILE NO.	SHEET3 OF 6

THE INFORMATION CONTAINED IN THIS DOCUMENT IS PROPRIETARY TO Y-S ELECTRONIC, ANY REPRODUCTION IN PART OR WHOLE WITHOUT PRIOR WRITTEN APPROVAL OR AUTHORIZATION OF Y-S ELECTRONIC IS STRICTLY PROHIBITED.

RoHS COMPLIANT

REVISIONS				
REV	ECN NO.	DESCRIPTION	APPROVED BY	DATE



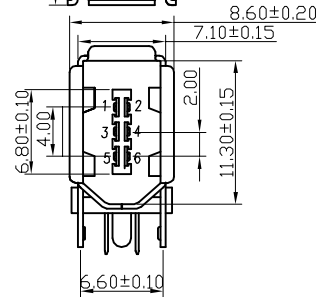
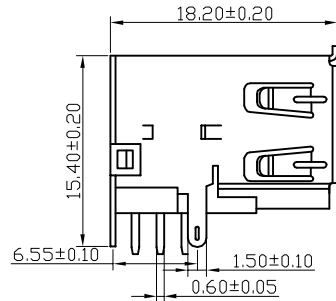
Specification:

1.Material:

- 1.1 Insulator:UL 94-V0 rated.
- 1.2 Contact: Phosphor bronze,t=0.30mm.
- 1.3 Shell: Brass,up t=0.20mm, down t=0.40mm.

2.Specification:

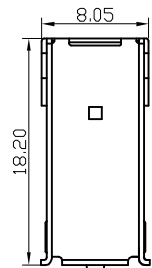
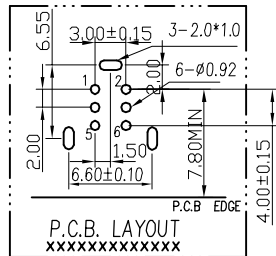
- 2.1 Current rating: 1 A Max.
- 2.2 Dielectric withstanding voltage: 500 V(ac) for 1 minute.
- 2.3 Contact resistance: 30 mW Max.
- 2.4 Insulation resistance: 1000 MW Min at DC 500V.
- 2.5 Total mating force: 3.0 Kgf Max.
- 2.6 Total unmating force: 0.5 Kgf Min.
- 2.7 Temperature range:-40°C to+60°C.



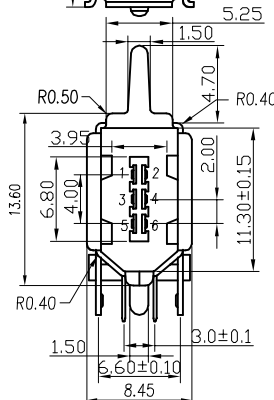
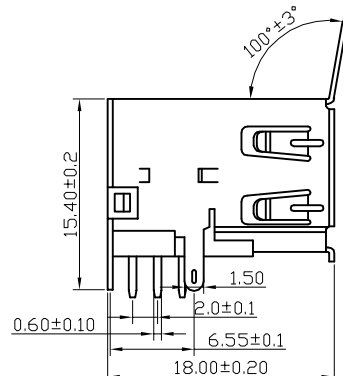
Ordering Information

187b - $\frac{XX}{a} \frac{X}{b} \frac{X}{c} \frac{X}{d} \frac{X}{e} \frac{X}{f} \frac{X}{g}$

IEEE 1394-6PIN(F)側向90° Y-S P/N:187b-06202134



- a. No. Of Pins
 - 04: 04 positions
 - 06: 06 positions
 - 09: 09 positions
- b. Contact Type
 - 1: Male
 - 2: Female
- c. Contact Plating
 - 0: Gold flash selective gold
 - 1: 5u" selective gold over 50u" nickel
 - 2: 10u" selective gold over 50u" nickel
 - 3: 15u" selective gold over 50u" nickel
 - 4: 30u" selective gold over 50u" nickel
- d. Terminal Type
 - 1: 180d
 - 2: 90d
 - 3: SMT type
- e. Shell Plating
 - 1: Nickel
 - 2: Tin
 - 2: Gold flash
- f. Insulator Color
 - 1: White
 - 2: Black(PBT)
 - 3: Black(High Temperature)
- g. Type
 - 1: Dip type
 - 2: SMT type
 - 3: 正向 90D DIP
 - 4: 側向 90D DIP
 - 5: 側向 90D DIP 加彈片
 - 6: ASSEMBLY SR DD#4.2



IEEE 1394-6PIN(F)側向90°加彈片 Y-S P/N:187b-06202135

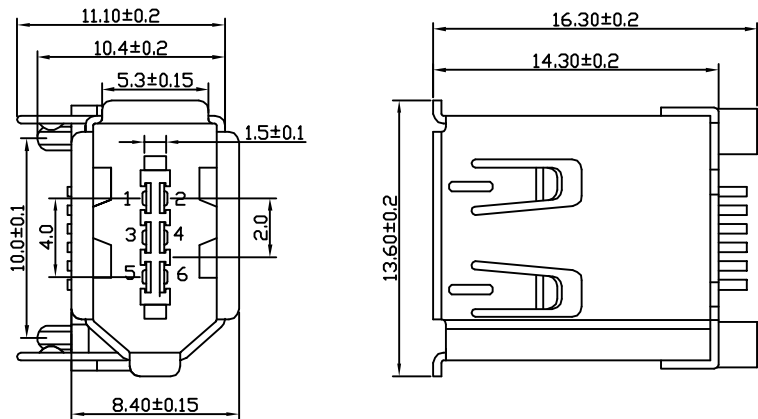
DO NOT SCALE DRAWING

DIMENSIONS: <input type="checkbox"/> MM [INCH] <input type="checkbox"/> INCH [mm] <input checked="" type="checkbox"/> MM ONLY	CAD GENERATED DRAWING, DO NOT MANUALLY UPDATE DRAWN BY AND DATE JUSTIN XING 06-13-06	Y-S ELECTRONIC CO., LTD. No. 101, Sec. 1, Long-An Street, Lu-Chu, Taoyuan, Taiwan, R.O.C. TEL: +886-3-3609819 FAX: +886-3-3609817		
			UNLESS OTHERWISE SPECIFIED, GENERAL TOLERANCE: DECIMALS ANGLES X: ±0.38 [0.015] X°: ±3° .X: ±0.25 [0.010] .X°: ±1.0° .XX: ±0.13 [0.005]	CHECKED BY AND DATE JUSTIN XING 06-13-06 APPROVED BY AND DATE KING CHIU 06-13-06 THIRD ANGLE PROJECTION
MATERIAL FINISH	SCALE: 2.6 : 1	SIZE: A3	DRAWING NO. 187b-062XXXXX	REV A
FILE NO.:			SHEET 4 OF 6	

THE INFORMATION CONTAINED IN THIS DOCUMENT IS PROPRIETARY TO Y-S ELECTRONIC, ANY REPRODUCTION IN PART OR WHOLE WITHOUT PRIOR WRITTEN APPROVAL OR AUTHORIZATION OF Y-S ELECTRONIC IS STRICTLY PROHIBITED.

RoHS COMPLIANT

REVISIONS				
REV	ECN NO.	DESCRIPTION	APPROVED BY	DATE



Specification:

1. Material:

- 1.1 Insulator: UL 94-V0 rated.
- 1.2 Contact: Phosphor bronze, t=0.30mm.
- 1.3 Shell: Brass, up t=0.20mm, down t=0.40mm.

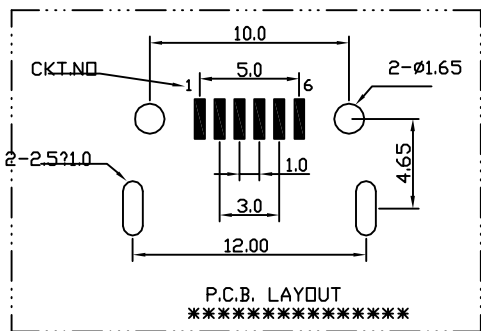
2. Specification:

- 2.1 Current rating: 1 A Max.
- 2.2 Dielectric withstanding voltage: 500 V(ac) for 1 minute.
- 2.3 Contact resistance: 30 mW Max.
- 2.4 Insulation resistance: 1000 MW Min at DC 500V.
- 2.5 Total mating force: 3.0 Kgf Max.
- 2.6 Total unmating force: 0.5 Kgf Min.
- 2.7 Temperature range: -40°C to +60°C.

Ordering Information

187b - $\frac{XX}{a} \frac{X}{b} \frac{X}{c} \frac{X}{d} \frac{X}{e} \frac{X}{f} \frac{X}{g}$

- a. No. Of Pins
 - 04: 04 positions
 - 06: 06 positions
 - 09: 09 positions
- b. Contact Type
 - 1: Male
 - 2: Female
- c. Contact Plating
 - 0: Gold flash selective gold
 - 1: 5u" selective gold over 50u" nickel
 - 2: 10u" selective gold over 50u" nickel
 - 3: 15u" selective gold over 50u" nickel
 - 4: 30u" selective gold over 50u" nickel
- d. Terminal Type
 - 1: 180d
 - 2: 90d
 - 3: SMT type
- e. Shell Plating
 - 1: Nickel
 - 2: Tin
 - 2: Gold flash
- f. Insulator Color
 - 1: White
 - 2: Black(PBT)
 - 3: Black(High Temperature)
- g. Type
 - 1: Dip type
 - 2: SMT type
 - 3: 正向 90D DIP
 - 4: 侧向 90D DIP
 - 5: 侧向 90D DIP 加弹片
 - 6: ASSEMBLY SR DD#4.2



IEEE 1394-6P(INF)S.M.T

Y-S P/N:187b-06203132

DIMENSIONS: <input type="checkbox"/> MM [INCH] <input type="checkbox"/> INCH [mm] <input checked="" type="checkbox"/> MM ONLY	CAD GENERATED DRAWING, DO NOT MANUALLY UPDATE	Y-S ELECTRONIC CO., LTD. No. 101, Sec. 1, Long-An Street, Lu-Chu, Taoyuan, Taiwan, R.O.C. TEL: +886-3-3609819 FAX: +886-3-3609817	
	UNLESS OTHERWISE SPECIFIED, GENERAL TOLERANCE: DECIMALS: X ±0.38 [0.015], .X ±0.25 [0.010], .XX ±0.13 [0.005] ANGLES: X° ±3°, .X° ±1.0°		DRAWN BY AND DATE: JUSTIN XING 06-13-06 CHECKED BY AND DATE: JUSTIN XING 06-13-06 APPROVED BY AND DATE: KING CHIU 06-13-06 THIRD ANGLE PROJECTION
MATERIAL		DRAWING NO. 187b-06203132	REV A
FINISH		SCALE: 4:1 SIZE: A3	FILE NO.

DO NOT SCALE DRAWING

