

THE INFORMATION CONTAINED IN THIS DOCUMENT IS PROPRIETARY TO Y-S ELECTRONIC, ANY REPRODUCTION IN PART OR WHOLE WITHOUT PRIOR WRITTEN APPROVAL OR AUTHORIZATION OF Y-S ELECTRONIC IS STRICTLY PROHIBITED.

RoHS COMPLIANT

REV.	DESCRIPTION	ECN NO.	DWN.	CHK.	APVD.	DATE
A			Xie		Zhou	2023-06-25

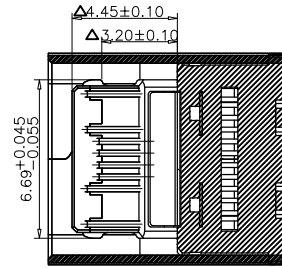
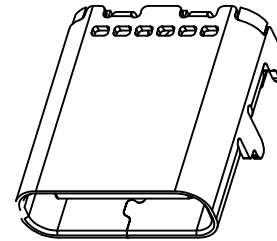
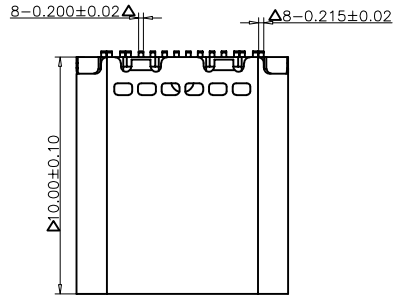
NOTE:

- 1.MATERIAL:
 - 1.1 INSULATOR: HIGH TEMPERATURE PLASTIC UL 94V-0;
 - 1.2 CONTACT: COPPER ALLOY
 - 1.3 SHELL:STAINLESS STEEL
- 2.ELECTRICAL CHARACTERISTICS:
 - 2.1 CONTACT RESISTANCE: 40mΩ Max FOR INITIAL. 30mΩ CHANGE AFTER TEST. MEASURE AT 20mV, 100mA.
 - 2.2 CONTACT CURRENT RATING: 5A FOR VBUS PIN; 1.25A FOR VCONN PIN.
 - 2.3 DIELECTRIC WITHSTANDING VOLTAGE: 100V AC R.M.S.
 - 2.4 INSULATION RESISTANCE 100MΩ Min
 - 2.5 OPERATING TEMPERATURE: -40°C ~ 85°C
- 3 MECHANICAL CHARACTERISTICS:
 - 3.1 MATING FORCE: 5~20 N.
 - 3.2 UNMATED FORCE: 8~20N AFTER TEST
 - 3.3 DURABILITY: 10,000 CYCLES
- 4.PLATING
 - 4.1 TERMINAL CONTACT: (SEE TAB) GOLD PLATING ALL OVER 50u" Min NICKEL AND 80u"Min Tin ALL OVER 50u" Min NICKEL ON SOLDER AREA
 - 4.2 SHELL: 50u" Min. NICKEL ALL OVER,
- 5.TID 5719
6. "△" Focus on size control

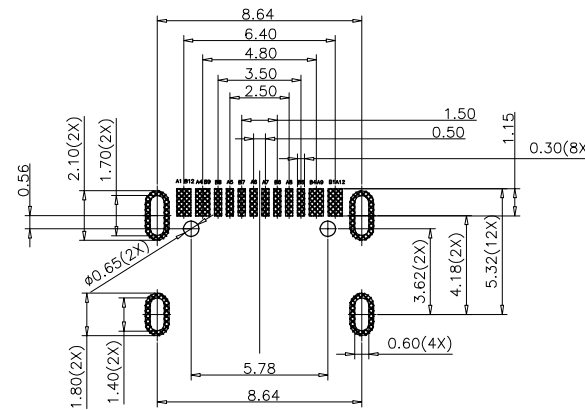
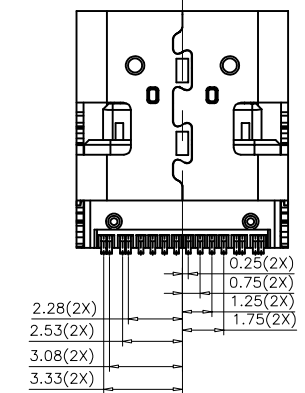
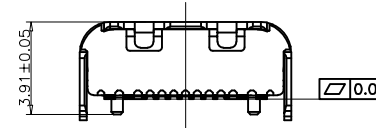
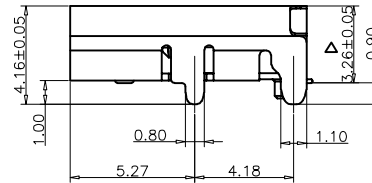
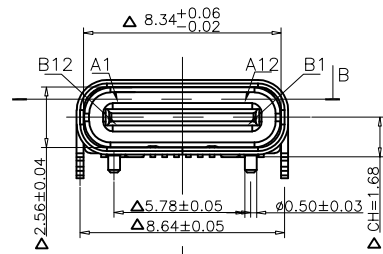
Ordering Information

184j - $\frac{XX}{a} \frac{X}{b} \frac{X}{c} \frac{X}{d} \frac{X}{e} \frac{X}{f}$

- a. No. Of Pins
16: 16 positions
- b. Contact Type
L: Female (CH=1.68,L=10.00)
- c. Contact Plating
0: Gold flash selective gold
- d. Shell Type
1: Nickel
- e. Insulator Color
1: Black (LCP)
- f. Contact Type(Signal Pin)
N: SMD Type



cross section B-B



RECOMMENDED P.C.B LAYOUT

DO NOT SCALE DRAWING

DIMENSIONS: <input type="checkbox"/> mm <input type="checkbox"/> INCH <input checked="" type="checkbox"/> mm ONLY		CAD GENERATED DRAWING, DO NOT MANUALLY UPDATE		
UNLESS OTHERWISE SPECIFIED, GENERAL TOLERANCE: DECIMALS ANGLES .X ±0.38 X* ±3° .X ±0.25 .X* ±1.0° .XX ±0.15		DRAWN BY AND DATE Xie 2017-12-15		
MATERIAL:		CHECKED BY AND DATE Fan 2017-12-15		USB C Female 90° SMT 16P L=10.0MM
FINISH:		APPROVED BY AND DATE Zhou 2017-12-15		
SCALE: 1 : 1		THIRD ANGLE PROJECTION		184J-16L011N
SIZE: A3		FILE NO.:		
				SHEET 1 OF 1