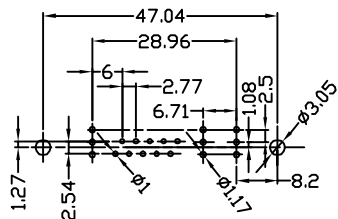
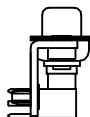
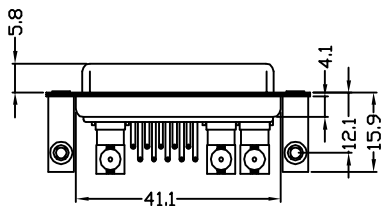
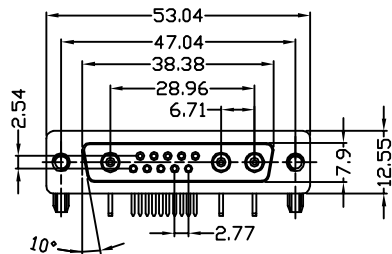


THE INFORMATION CONTAINED IN THIS DOCUMENT IS PROPRIETARY TO Y-S ELECTRONIC, ANY REPRODUCTION IN PART OR WHOLE WITHOUT PRIOR WRITTEN APPROVAL OR AUTHORIZATION OF Y-S ELECTRONIC IS STRICTLY PROHIBITED.

RoHS COMPLIANT

REVISIONS				
REV	ECN NO.	DESCRIPTION	APPROVED BY	DATE



RECOMMENDED PCB LAYOUT

Specifications:

Electrical characteristics:

- Contact Current Rating : 5 Amperes.
- Power Rating : 20 Amperes.
- Dielectric Withstanding Voltage : AC 1000V r.m.s
- Insulation Resistance : 5000 Megohms Minimum.
- Contact RESistance : 30 Millohms Maximum.
- Operating Temperature : -55°C TO +125°C

Mechanical Characteristics:

- Contact insertion Force : 10Kg Maximum.
- Contact separator Force : 0.3Kg Minimum.

Materials:

- Contacts : Brass
- Insulator : PBT UL 94V-0 Rated
- Shell : SPCC

Finishes:

- Contact : Gold Flash
- Shell : Tin
- Coaxial pin : 10A 3u"

DO NOT SCALE DRAWING

DIMENSIONS: <input type="checkbox"/> MM [INCH] <input type="checkbox"/> INCH [mm] <input checked="" type="checkbox"/> MM ONLY		CAD GENERATED DRAWING, DO NOT MANUALLY UPDATE	
UNLESS OTHERWISE SPECIFIED, GENERAL TOLERANCE: DECIMALS ANGLES X ±0.38 [0.015] X° ±3° .X ±0.25 [0.010] .X° ±1.0° .XX ±0.13 [0.005]		CHECKED BY AND DATE JUSTIN XING 10-09-06 APPROVED BY AND DATE KING CHIU 10-09-06 THIRD ANGLE PROJECTION	
MATERIAL			
FINISH			
SCALE: 1 : 1		SIZE: A3	



Y-S ELECTRONIC CO., LTD.
 No. 101, Sec. 1, Long-An Street,
 Lu-Chu, Taoyuan, Taiwan, R.O.C.
 TEL: +886-3-3609819 FAX: +886-3-3609817

TITLE		REV	
162 SEREIS D-SUB COAXIAL R/A TYPE		A	
DRAWING NO.		FILE NO.	
162-H215102171		SHEET 1 OF 1	

THE INFORMATION CONTAINED IN THIS DOCUMENT IS PROPRIETARY TO Y-S ELECTRONIC. ANY REPRODUCTION IN PART OR WHOLE WITHOUT PRIOR WRITTEN APPROVAL OR AUTHORIZATION OF Y-S ELECTRONIC IS STRICTLY PROHIBITED.

RoHS COMPLIANT

REVISIONS				
REV	ECN NO.	DESCRIPTION	APPROVED BY	DATE

Ordering Information

162 - $\frac{X}{a} \frac{X}{b} \frac{XX}{c} \frac{X}{d} \frac{X}{e} \frac{X}{f} \frac{X}{g} \frac{X}{h} \frac{X}{i}$

a. No. of Pins

A: 2W2 F: 8W8 K: 17W2 P:27W2
 B: 3W3 G: 11W1 L: 1W1 Q:9W4
 C: 5W1 H: 13W3 M: 21W1 R:11W1
 D: 5W5 I: 21W4 N: 24W7
 E: 7W2 J: 36W4 O: 25W3

b. Contact Type

1:COAXIAL MALE 8: POWER MALE(1 MALE 1 FEMALE)
 2:COAXIAL FEMALE 9: POWER FEMALE(10.1mm)(1 MALE 1 FEMALE)
 3:POWER MALE A: POWER FEMALE(10.5mm)(1 MALE 1 FEMALE)
 4:POWER FEMALE B: POWER FEMALE(11.0m)(1 MALE 1 FEMALE)
 5: POWER(2 MALE 1 FEMALE)
 6: POWER(1 MALE 2 FEMALE)
 7: POWER(1 MALE 1 FEMALE)

c. SIGNAL/Ohm

15:50Ω 17:75Ω
 POWER/Amp
 21:10 A(∅:1.8mm) 22:20 A(∅:2.95mm) 24:40 A(∅:3.75mm)

d. Contact Plating(Power/Coaxial Pin)

1: 3u' GOLD
 2: 15u' GOLD
 3: 30u' GOLD
 4: None
 5: 50u' GOLD

e. Contact Plating(Signal pin)

0: GOLD FLASH
 1: 3u' GOLD
 2: 15u' GOLD
 3: 30u' GOLD
 4: None

f. Shell Plating

0.Cr+3yellow chrome 3.Cr+6yellow chrome
 1.Nickel 4.Gold flash
 2.Tin(standard) 5.Special tin

g. Insulator Color

1: Black(standard)
 2: Green


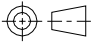
h. Options of Clinch Nut:

0: Clear hole∅3.05mm 7: L bracket-4 prong boardlock
 1: Front riveted,5.9mm A:Front rivet,2.0mm
 2: Rear riveted,5.9mm B:Front rivet,2.5mm
 3: Riveted boardlock:6.0*3.2mm C:Front rivet,4.0mm
 4: Z字片-2 prong boardlock D:Rear rivet,2.0mm
 5: L bracket-∅3.1 E:Rear rivet,2.5mm
 6: L bracket-2 prong boardlock F:Rear rivet,4.0mm

i. Flange Mounting Option

0: ∅3.05mm clear hole
 1: #4-40 threaded hole
 2: #4-40UNC hole with #4-40UNC screwlock(5.8*10.8mm) installed
 3: #4-40UNC hole with #4-40UNC screw lock(5.8*10.8mm) bulk-packed
 4: M3 threaded hole
 5: #4-40UNC threaded hole with M3 screwlock(5.8*10.8mm) installed
 6: M2.6 threaded hole
 7: #4-40UNC threaded hole with M2.6 screwlock(5.8*10.8mm) installed
 8: Front riveted:2.0*2.5mm nuts without screw thread

DO NOT SCALE DRAWING

DIMENSIONS: <input type="checkbox"/> MM [INCH] <input type="checkbox"/> INCH [mm] <input checked="" type="checkbox"/> MM ONLY	CAD GENERATED DRAWING, DO NOT MANUALLY UPDATE	 Y-S ELECTRONIC CO., LTD. No. 101, Sec. 1, Long-An Street, Lu-Chu, Taoyuan, Taiwan, R.O.C. TEL: +886-3-3609819 FAX: +886-3-3609817
	DRAWN BY AND DATE JUSTIN XING 07-03-06	
UNLESS OTHERWISE SPECIFIED, GENERAL TOLERANCE: DECIMALS ANGLES X: ±0.38 [0.015] X*: ±3° X: ±0.25 [0.010] X*: ±1.0° XX ±0.13 [0.005]	CHECKED BY AND DATE JUSTIN XING 07-03-06	TITLE 162 SEREIS D-SUB COAXIAL R/A TYPE
	APPROVED BY AND DATE KING CHIU 07-03-06	
MATERIAL	THIRD ANGLE PROJECTION 	DRAWING NO.
FINISH	SCALE: 1 : 1 SIZE: A3	REV C
FILE NO.		SHEET 1 OF 1