

THE INFORMATION CONTAINED IN THIS DOCUMENT IS PROPRIETARY TO Y-S ELECTRONIC, ANY REPRODUCTION IN PART OR WHOLE WITHOUT PRIOR WRITTEN APPROVAL OR AUTHORIZATION OF Y-S ELECTRONIC IS STRICTLY PROHIBITED.

RoHS COMPLIANT

REVISIONS				
REV	ECN NO.	DESCRIPTION	APPROVED BY	DATE
A				2005-10-27

Product Specification

Material

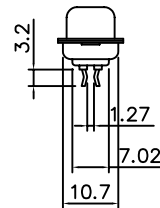
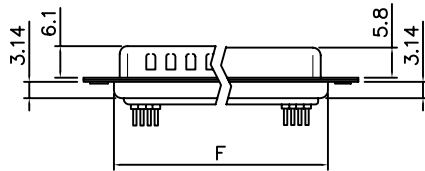
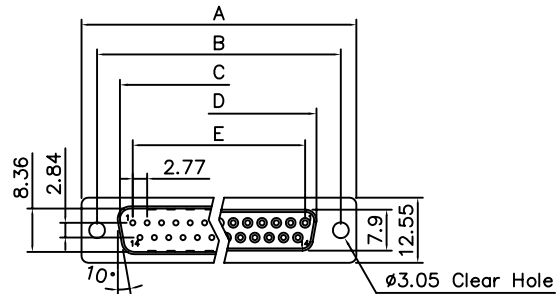
Insulator :Glass-Filled Thermoplastic PBT,UL94V-0 rated
 Contact :Brass
 Shell : Steel, 100u" Tin Over 50u" min Copper
 Clinch Nut: Brass, 100u" min Nickel Plated.
 Boardlock :Brass, 100u" min Tin Plated.
 Screwlock :Brass, 100u" min Nickel Plated.

Electrical

Contact Resistance :20 milliohms
 Max at 1 AMP DC.
 Insulation Resistance :1000
 magohms at 500 VDC
 Dielectric Withstanding Voltage :
 1000 VAC/rms 60Hz for 1 minute
 Current Rating :3 AMP
 Volatge Rating :250 VAC/rms 60Hz

Ordering Information

159 - $\frac{XX}{a} \frac{X}{b} \frac{X}{c} \frac{X}{d} \frac{X}{e} \frac{X}{f} \frac{X}{g} \frac{X}{h}$



Dimensions

Positions	A	B	C	D	E	F
9	30.81	24.99	16.92	16.33	11.08	19.20
15	39.20	33.30	25.25	24.66	19.39	27.70
25	53.05	47.04	38.96	38.38	33.24	41.10
37	69.40	63.50	55.42	54.84	49.86	57.30

- a. No. Of Pins
 09: 09 positions
 15: 15 positions
 25: 25 positions
 37: 37 positions
- b. Contact Type
 1: Male
 2: Female
- c. Contact Plating
 0: gold flash selective gold(standard)
 1: 5u" selective gold on contact
 2: 10u" selective gold on contact
 3: 15u" selective gold on contact
 4: 30u" selective gold on contact
 5: 50u" selective gold on contact
 6: Gold flash full gold
- d. Shell Plating
 1: Nickel (standard)
 2: Tin
 3: Chromated
- e. Insulator Color
 1: Blue
 2: Black (Standard)
 3: White
 4: Gray
- f. Position Of Clinch Nut
 0: ø3.05mm clear hole
 1: Riveted front shell
 2: Riveted rear shell
 3: Riveted boardlock
- g. Flange Mounting Option
 0: ø3.05mm clear hole
 1: #4-40 threaded hole
 2: #4-40 threaded hole with #4-40 unc screwlock installed
 3: #4-40 threaded hole with #4-40 unc screwlock bulk-packed
 4: M3 threaded hole
 5: M3 threaded hole with M3 screwlock installed
 6: M2.6 threaded hole
 7: M2.6 threaded hole with M2.6 screwlock installed
- h. Thickness Of PCB
 1: 1.2mm
 2: 1.6mm

DO NOT SCALE DRAWING

DIMENSIONS: <input type="checkbox"/> mm [INCH] <input type="checkbox"/> INCH [mm] <input checked="" type="checkbox"/> mm ONLY		CAD GENERATED DRAWING, DO NOT MANUALLY UPDATE		Y-S ELECTRONIC CO., LTD. No. 101, Sec. 1, Long-An Street, Lu-Chu, Taoyuan, Taiwan, R.O.C. TEL: +886-3-3609819 FAX: +886-3-3609817	
UNLESS OTHERWISE SPECIFIED, GENERAL TOLERANCE: DECIMALS ANGLES .X ±0.38 [0.015] X° ±3° .X ±0.25 [0.010] .X° ±1.0° .XX ±0.13 [0.005]		DRAWN BY AND DATE JUSTIN XING 07-03-06			
CHECKED BY AND DATE JUSTIN XING 07-03-06		APPROVED BY AND DATE KING CHIU 07-03-06		THIRD ANGLE PROJECTION 	
MATERIAL		SCALE: 1 : 1		SIZE: A3	
FINISH		DRAWING NO. 159-XXXXXXXXXX		REV A	
FILE NO.:				SHEET 1 OF 1	