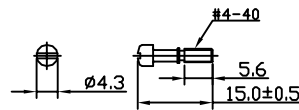
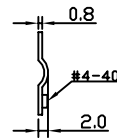
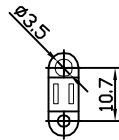
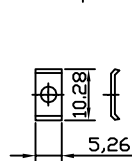
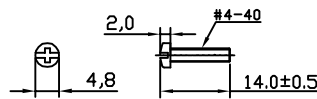
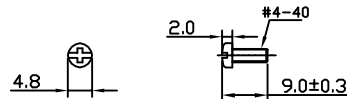
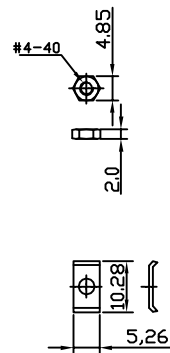
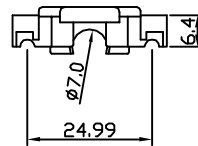
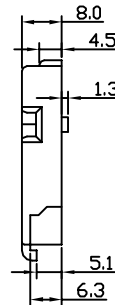
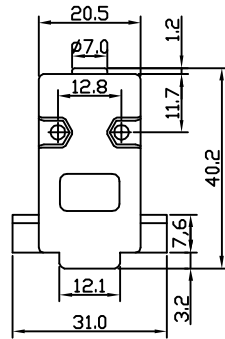


THE INFORMATION CONTAINED IN THIS DOCUMENT IS PROPRIETARY TO Y-S ELECTRONIC. ANY REPRODUCTION IN PART OR WHOLE WITHOUT PRIOR WRITTEN APPROVAL OR AUTHORIZATION OF Y-S ELECTRONIC IS STRICTLY PROHIBITED.

RoHS COMPLIANT

| REVISIONS |         |             |             |      |
|-----------|---------|-------------|-------------|------|
| REV       | ECN NO. | DESCRIPTION | APPROVED BY | DATE |
|           |         |             |             |      |



Product Specification

Material

Hood :ABS thermoplastic UL94V-0 rates  
 UL94V-0 rates  
 Screwlock :Steel, 100u' min Tin Plated.

Ordering Information

158 -  $\frac{XX}{a} \frac{X}{b} \frac{X}{c} \frac{X}{d} \frac{X}{e}$

- a. No. Of Pins
- b. Shell Type
  - 0: Plastic
  - 1: Nickel plate metalized
  - 2: Metal Hood(Die Cast)
- c. Screw Type
  - 1: Short screws with #4-40 unc
  - 2: Long screws with #4-40 unc
  - 3: Short screws with M3
  - 4: Long screws with M3
- d. Insulator Color
  - 1: Black
  - 2: Gray
  - 3: Beige
  - 4: Platinum
- e. Cable Entry
  - 1: 180°
  - 2: 90°
  - 3: 45°

Short Screw type  
 09pin type only

DO NOT SCALE DRAWING

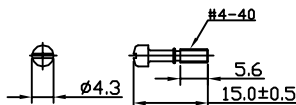
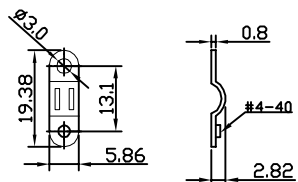
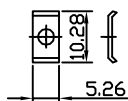
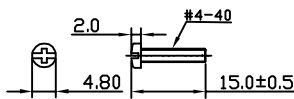
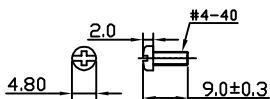
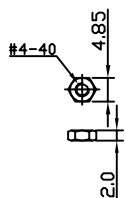
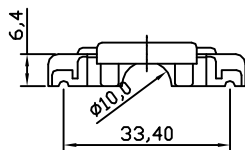
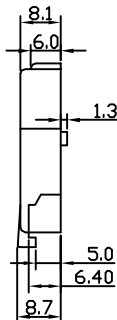
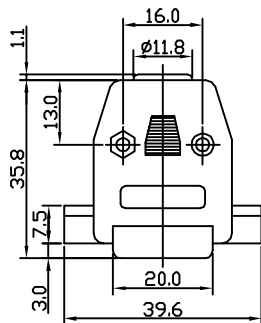
|  |   |   |   |
|--|---|---|---|
| DIMENSIONS:<br><input type="checkbox"/> MM [INCH] <input type="checkbox"/> INCH [mm] <input checked="" type="checkbox"/> MM ONLY | CAD GENERATED DRAWING,<br>DO NOT MANUALLY UPDATE  | <b>Y-S ELECTRONIC CO., LTD.</b><br>No. 101, Sec. 1, Long-An Street,<br>Lu-Chu, Taoyuan, Taiwan, R.O.C.<br>TEL: +886-3-3609819 FAX: +886-3-3609817 |   |
|  | UNLESS OTHERWISE SPECIFIED,<br>GENERAL TOLERANCE:<br>DECIMALS    ANGLES<br>X: ±0.38 [0.015]    X°: ±3°<br>.X: ±0.25 [0.010]    .X°: ±1.0°<br>.XX: ±0.13 [0.005] |   | DRAWN BY AND DATE<br>JAY ZHANG 04-09-08 |
| MATERIAL   | CHECKED BY AND DATE<br>JUSTIN XING 04-09-08   | 158 SERIES<br>D-SUB COVER   |   |
| FINISH   | APPROVED BY AND DATE<br>MICHAEL HUANG 04-09-08  |   | DRAWING NO.                             |
|  | THIRD ANGLE PROJECTION<br>  | 158-09X1XX  | REV                                     |
|  | SCALE:<br>1 : 1   | SIZE: A3  | A                                       |
|  |   | FILE NO.:   | SHEET 1 OF 8                            |

THE INFORMATION CONTAINED IN THIS DOCUMENT IS PROPRIETARY TO Y-S ELECTRONIC, ANY REPRODUCTION IN PART OR WHOLE WITHOUT PRIOR WRITTEN APPROVAL OR AUTHORIZATION OF Y-S ELECTRONIC IS STRICTLY PROHIBITED.

RoHS COMPLIANT

REVISIONS

| REV | ECN NO. | DESCRIPTION | APPROVED BY | DATE |
|-----|---------|-------------|-------------|------|
|     |         |             |             |      |



Product Specification

Material

Hood :ABS thermoplastic UL94V-0 rates  
 UL94V-0 rates  
 Screwlock :Steel, 100u' min Tin Plated.


Ordering Information

158 -  $\frac{XX}{a} \frac{X}{b} \frac{X}{c} \frac{X}{d} \frac{X}{e}$

- a. No. Of Pins
- b. Shell Type
  - 0: Plastic
  - 1: Nickel plate metalized
  - 2: Metal Hood(Die Cast)
- c. Screw Type
  - 1: Short screws with #4-40 unc
  - 2: Long screws with #4-40 unc
  - 3: Short screws with M3
  - 4: Long screws with M3
- d. Insulator Color
  - 1: Black
  - 2: Gray
  - 3: Beige
  - 4: Platinum
- e. Cable Entry
  - 1: 180°
  - 2: 90°
  - 3: 45°

DO NOT SCALE DRAWING

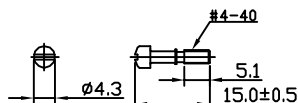
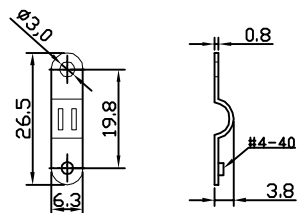
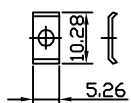
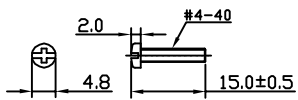
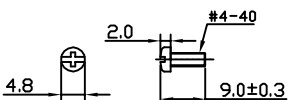
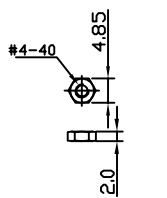
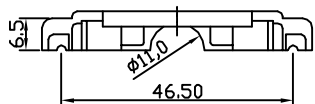
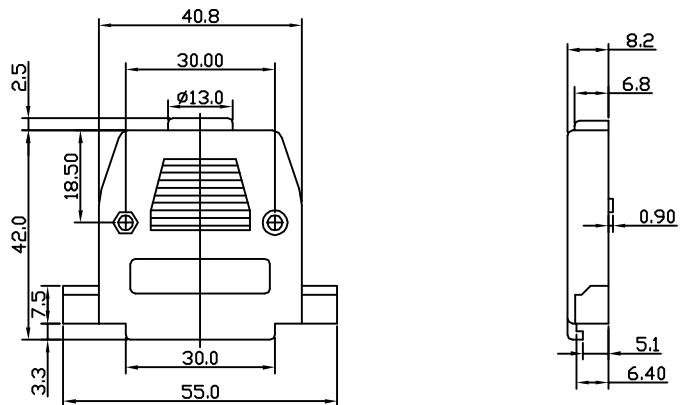
Short Screw type  
 15pin type only

|  |   |   |   |
|--|---|---|---|
| DIMENSIONS:<br><input type="checkbox"/> MM [INCH] <input type="checkbox"/> INCH [mm] <input checked="" type="checkbox"/> MM ONLY | CAD GENERATED DRAWING,<br>DO NOT MANUALLY UPDATE  |  <b>Y-S ELECTRONIC CO., LTD.</b><br>No. 101, Sec. 1, Long-An Street,<br>Lu-Chu, Taoyuan, Taiwan, R.O.C.<br>TEL: +886-3-3609819 FAX: +886-3-3609817 |   |
|  | UNLESS OTHERWISE SPECIFIED,<br>GENERAL TOLERANCE:<br>DECIMALS      ANGLES<br>X: ±0.38 [0.015]    X°: ±3°<br>.X: ±0.25 [0.010]    .X°: ±1.0°<br>.XX: ±0.13 [0.005] |   | DRAWN BY AND DATE<br>JAY ZHANG 04-09-08 |
| MATERIAL   | CHECKED BY AND DATE<br>JUSTIN XING 04-09-08   | DRAWING NO.<br>158-15X1XX   |   |
| FINISH   | APPROVED BY AND DATE<br>MICHAEL HUANG 04-09-08  |   | REV<br>A                                |
| SCALE:<br>1 : 1  | SIZE: A3  | FILE NO.:   | SHEET 2 OF 8                            |

THE INFORMATION CONTAINED IN THIS DOCUMENT IS PROPRIETARY TO Y-S ELECTRONIC. ANY REPRODUCTION IN PART OR WHOLE WITHOUT PRIOR WRITTEN APPROVAL OR AUTHORIZATION OF Y-S ELECTRONIC IS STRICTLY PROHIBITED.

RoHS COMPLIANT

| REVISIONS |         |             |             |      |
|-----------|---------|-------------|-------------|------|
| REV       | ECN NO. | DESCRIPTION | APPROVED BY | DATE |
|           |         |             |             |      |



Short Screw type  
25pin type only

Product Specification  
Material  
Hood :ABS thermoplastic UL94V-0 rates  
UL94V-0 rates  
Screwlock :Steel, 100u' min Tin Plated.

Ordering Information

158 -  $\frac{XX}{a} \frac{X}{b} \frac{X}{c} \frac{X}{d} \frac{X}{e}$

- a. No. Of Pins
- b. Shell Type
  - 0: Plastic
  - 1: Nickel plate metalized
  - 2: Metal Hood(Die Cast)
- c. Screw Type
  - 1: Short screws with #4-40 unc
  - 2: Long screws with #4-40 unc
  - 3: Short screws with M3
  - 4: Long screws with M3
- d. Insulator Color
  - 1: Black
  - 2: Gray
  - 3: Beige
  - 4: Platinum
- e. Cable Entry
  - 1: 180°
  - 2: 90°
  - 3: 45°

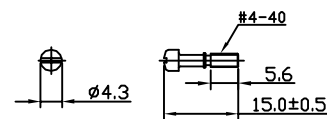
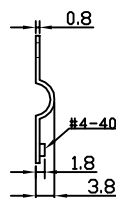
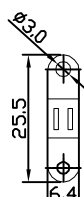
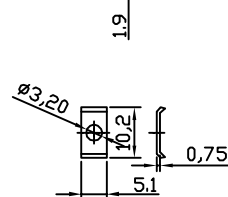
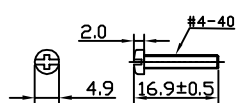
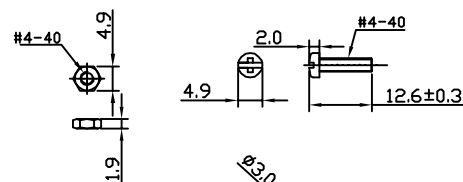
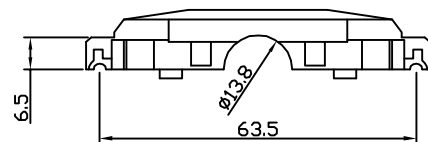
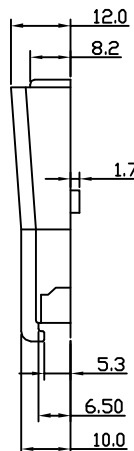
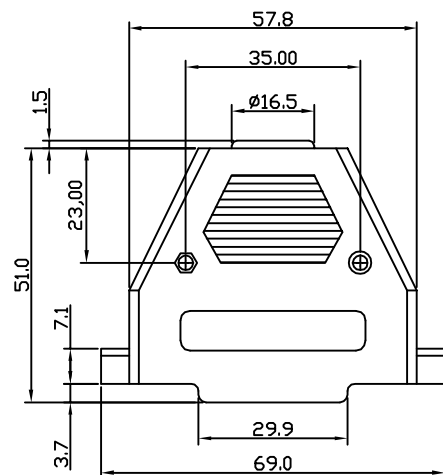
DO NOT SCALE DRAWING

|  |   |   |   |
|--|---|---|---|
| DIMENSIONS:<br><input type="checkbox"/> MM [INCH] <input type="checkbox"/> INCH [mm] <input checked="" type="checkbox"/> MM ONLY | CAD GENERATED DRAWING,<br>DO NOT MANUALLY UPDATE  | <b>Y-S ELECTRONIC CO., LTD.</b><br>No. 101, Sec. 1, Long-An Street,<br>Lu-Chu, Taoyuan, Taiwan, R.O.C.<br>TEL: +886-3-3609819 FAX: +886-3-3609817 |   |
|  | UNLESS OTHERWISE SPECIFIED,<br>GENERAL TOLERANCE:<br>DECIMALS      ANGLES<br>.X ±0.38 [0.015]    X° ±3°<br>.X ±0.25 [0.010]    .X° ±1.0°<br>.XX ±0.13 [0.005] |   | CHECKED BY AND DATE<br>JUSTIN XING 04-09-08<br>APPROVED BY AND DATE<br>MICHAEL HUANG 04-09-08<br>THIRD ANGLE PROJECTION |
| MATERIAL   |   | DRAWING NO.<br>158-25X1XX   | REV<br>A  |
| FINISH   | SCALE:<br>1 : 1      SIZE: A3   | FILE NO.:   | SHEET 3 OF 8  |

THE INFORMATION CONTAINED IN THIS DOCUMENT IS PROPRIETARY TO Y-S ELECTRONIC. ANY REPRODUCTION IN PART OR WHOLE WITHOUT PRIOR WRITTEN APPROVAL OR AUTHORIZATION OF Y-S ELECTRONIC IS STRICTLY PROHIBITED.

RoHS COMPLIANT

| REVISIONS |         |             |             |      |
|-----------|---------|-------------|-------------|------|
| REV       | ECN NO. | DESCRIPTION | APPROVED BY | DATE |
|           |         |             |             |      |



Product Specification

Material

Hood :ABS thermoplastic UL94V-0 rates  
 UL94V-0 rates  
 Screwlock :Steel, 100u' min Tin Plated.

Ordering Information

158 -  $\frac{XX}{a}$   $\frac{X}{b}$   $\frac{X}{c}$   $\frac{X}{d}$   $\frac{X}{e}$

- a. No. Of Pins
- b. Shell Type
  - 0: Plastic
  - 1: Nickel plate metalized
  - 2: Metal Hood(Die Cast)
- c. Screw Type
  - 1: Short screws with #4-40 unc
  - 2: Long screws with #4-40 unc
  - 3: Short screws with M3
  - 4: Long screws with M3
- d. Insulator Color
  - 1: Black
  - 2: Gray
  - 3: Beige
  - 4: Platinum
- e. Cable Entry
  - 1: 180°
  - 2: 90°
  - 3: 45°

DO NOT SCALE DRAWING

Short Screw type  
 37pin type only

DIMENSIONS:  
 MM [INCH]  INCH [mm]  MM ONLY

UNLESS OTHERWISE SPECIFIED,  
 GENERAL TOLERANCE:  
 DECIMALS ANGLES  
 X: ±0.38 [0.015] X°: ±3°  
 .X: ±0.25 [0.010] .X°: ±1.0°  
 .XX: ±0.13 [0.005]

MATERIAL  
 FINISH

CAD GENERATED DRAWING,  
 DO NOT MANUALLY UPDATE  
 DRAWN BY AND DATE  
 JAY ZHANG 04-09-08

CHECKED BY AND DATE  
 JUSTIN XING 04-09-08  
 APPROVED BY AND DATE  
 MICHAEL HUANG 04-09-08  
 THIRD ANGLE PROJECTION

SCALE:  
 1 : 1  
 SIZE: A3



**Y-S ELECTRONIC CO., LTD.**  
 No. 101, Sec. 1, Long-An Street,  
 Lu-Chu, Taoyuan, Taiwan, R.O.C.  
 TEL: +886-3-3609819 FAX: +886-3-3609817

TITLE  
 158 SERIES  
 D-SUB COVER

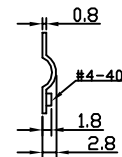
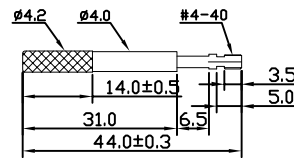
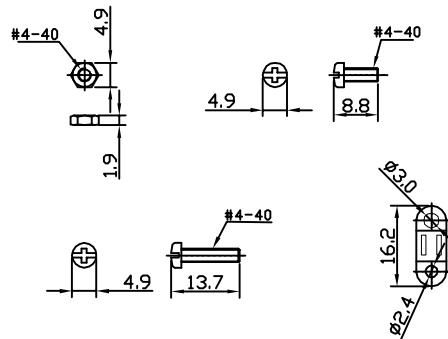
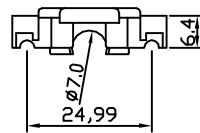
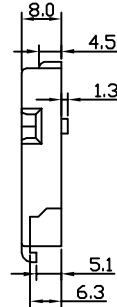
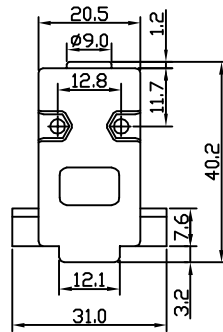
DRAWING NO. 158-37X1XX  
 REV A  
 FILE NO. SHEET 4 OF 8

THE INFORMATION CONTAINED IN THIS DOCUMENT IS PROPRIETARY TO Y-S ELECTRONIC. ANY REPRODUCTION IN PART OR WHOLE WITHOUT PRIOR WRITTEN APPROVAL OR AUTHORIZATION OF Y-S ELECTRONIC IS STRICTLY PROHIBITED.

RoHS COMPLIANT

REVISIONS

| REV | ECN NO. | DESCRIPTION | APPROVED BY | DATE |
|-----|---------|-------------|-------------|------|
|     |         |             |             |      |



Product Specification

Material

Hood :ABS thermoplastic UL94V-0 rates  
 UL94V-0 rates  
 Screwlock :Steel, 100u' min Tin Plated.

Ordering Information

158 -  $\frac{XX}{a} \frac{X}{b} \frac{X}{c} \frac{X}{d} \frac{X}{e}$

- a. No. Of Pins
- b. Shell Type
  - 0: Plastic
  - 1: Nickel plate metalized
  - 2: Metal Hood(Die Cast)
- c. Screw Type
  - 1: Short screws with #4-40 unc
  - 2: Long screws with #4-40 unc
  - 3: Short screws with M3
  - 4: Long screws with M3
- d. Insulator Color
  - 1: Black
  - 2: Gray
  - 3: Beige
  - 4: Platinum
- e. Cable Entry
  - 1: 180°
  - 2: 90°
  - 3: 45°

DO NOT SCALE DRAWING

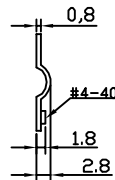
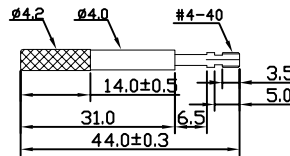
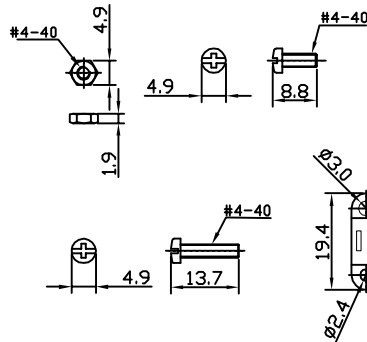
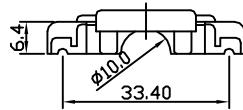
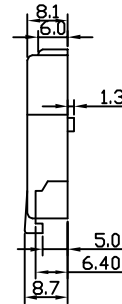
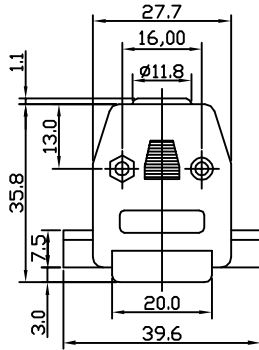
Long Screw type  
 09pin type only

|   |  |  |  |   |  |
|---|--|--|--|---|--|
| DIMENSIONS:<br><input type="checkbox"/> MM [INCH] <input type="checkbox"/> INCH [mm] <input checked="" type="checkbox"/> MM ONLY                              |  | CAD GENERATED DRAWING,<br>DO NOT MANUALLY UPDATE |  | <b>Y-S ELECTRONIC CO., LTD.</b><br>No. 101, Sec. 1, Long-An Street,<br>Lu-Chu, Taoyuan, Taiwan, R.O.C.<br>TEL: +886-3-3609819 FAX: +886-3-3609817 |  |
| UNLESS OTHERWISE SPECIFIED,<br>GENERAL TOLERANCE:<br>DECIMALS      ANGLES<br>.X ±0.38 [0.015]    X° ±3°<br>.X ±0.25 [0.010]    .X° ±1.0°<br>.XX ±0.13 [0.005] |  | CHECKED BY AND DATE<br>JUSTIN XING 04-09-08      |  |   |  |
| MATERIAL  |  | APPROVED BY AND DATE<br>MICHAEL HUANG 04-09-08   |  | DRAWING NO.<br>158-09X2XX   |  |
| FINISH  |  | THIRD ANGLE PROJECTION<br>                       |  | REV<br>A  |  |
| SCALE:<br>1 : 1   |  | SIZE: A3   |  | FILE NO.:      SHEET 5 OF 8   |  |

THE INFORMATION CONTAINED IN THIS DOCUMENT IS PROPRIETARY TO Y-S ELECTRONIC. ANY REPRODUCTION IN PART OR WHOLE WITHOUT PRIOR WRITTEN APPROVAL OR AUTHORIZATION OF Y-S ELECTRONIC IS STRICTLY PROHIBITED.

RoHS COMPLIANT

| REVISIONS |         |             |             |      |
|-----------|---------|-------------|-------------|------|
| REV       | ECN NO. | DESCRIPTION | APPROVED BY | DATE |
|           |         |             |             |      |



Product Specification

Material

Hood :ABS thermoplastic UL94V-0 rates  
 UL94V-0 rates  
 Screwlock :Steel, 100u' min Tin Plated.


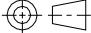
Ordering Information

158 -  $\frac{XX}{a} \frac{X}{b} \frac{X}{c} \frac{X}{d} \frac{X}{e}$

- a. No. Of Pins
- b. Shell Type
  - 0: Plastic
  - 1: Nickel plate metalized
  - 2: Metal Hood(Die Cast)
- c. Screw Type
  - 1: Short screws with #4-40 unc
  - 2: Long screws with #4-40 unc
  - 3: Short screws with M3
  - 4: Long screws with M3
- d. Insulator Color
  - 1: Black
  - 2: Gray
  - 3: Beige
  - 4: Platinum
- e. Cable Entry
  - 1: 180°
  - 2: 90°
  - 3: 45°

DO NOT SCALE DRAWING

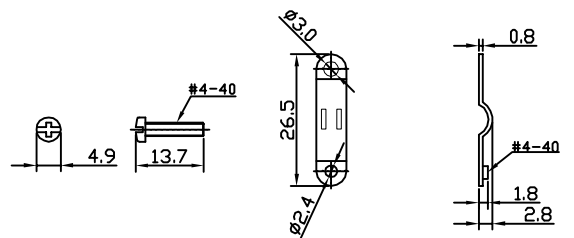
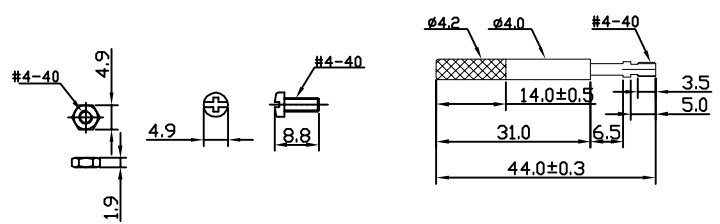
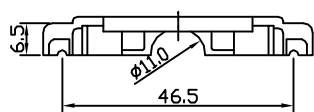
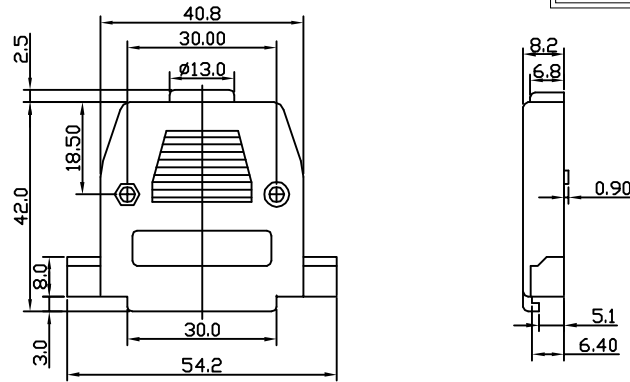
Long Screw type  
 15pin type only

|  |   |   |   |   |
|--|---|---|---|---|
| DIMENSIONS:<br><input type="checkbox"/> MM [INCH] <input type="checkbox"/> INCH [mm] <input checked="" type="checkbox"/> MM ONLY | CAD GENERATED DRAWING,<br>DO NOT MANUALLY UPDATE<br><br>DRAWN BY AND DATE<br>JAY ZHANG 04-09-08 |  <b>Y-S ELECTRONIC CO., LTD.</b><br>No. 101, Sec. 1, Long-An Street,<br>Lu-Chu, Taoyuan, Taiwan, R.O.C.<br>TEL: +886-3-3609819 FAX: +886-3-3609817 |   |   |
|  |   |   | UNLESS OTHERWISE SPECIFIED,<br>GENERAL TOLERANCE:<br>DECIMALS      ANGLES<br>.X ±0.38 [0.015]    X° ±3°<br>.X ±0.25 [0.010]    .X° ±1.0°<br>.XX ±0.13 [0.005] | CHECKED BY AND DATE<br>JUSTIN XING 04-09-08<br><br>APPROVED BY AND DATE<br>MICHAEL HUANG 04-09-08<br><br>THIRD ANGLE PROJECTION |
| MATERIAL   | SCALE:<br>1 : 1   | SIZE: A3  | DRAWING NO.<br><br>158-15X2XX   | REV<br>A  |
| FINISH   |            | FILE NO.:   | SHEET 6 OF 8  |   |

THE INFORMATION CONTAINED IN THIS DOCUMENT IS PROPRIETARY TO Y-S ELECTRONIC, ANY REPRODUCTION IN PART OR WHOLE WITHOUT PRIOR WRITTEN APPROVAL OR AUTHORIZATION OF Y-S ELECTRONIC IS STRICTLY PROHIBITED.

RoHS COMPLIANT

| REVISIONS |         |             |             |      |
|-----------|---------|-------------|-------------|------|
| REV       | ECN NO. | DESCRIPTION | APPROVED BY | DATE |
|           |         |             |             |      |



Long Screw type  
25pin type only

Product Specification  
Material  
Hood :ABS thermoplastic UL94V-0 rates  
UL94V-0 rates  
Screwlock :Steel, 100u' min Tin Plated.

Ordering Information

158 -  $\frac{XX}{a}$   $\frac{X}{b}$   $\frac{X}{c}$   $\frac{X}{d}$   $\frac{X}{e}$

- a. No. Of Pins
- b. Shell Type
  - 0: Plastic
  - 1: Nickel plate metalized
  - 2: Metal Hood(Die Cast)
- c. Screw Type
  - 1: Short screws with #4-40 unc
  - 2: Long screws with #4-40 unc
  - 3: Short screws with M3
  - 4: Long screws with M3
- d. Insulator Color
  - 1: Black
  - 2: Gray
  - 3: Beige
  - 4: Platinum
- e. Cable Entry
  - 1: 180°
  - 2: 90°
  - 3: 45°

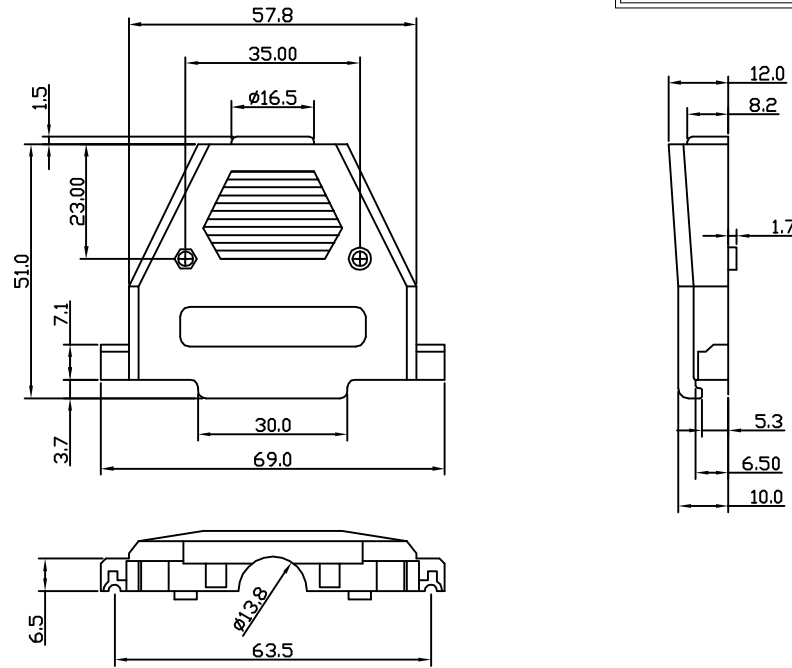
DO NOT SCALE DRAWING

|  |   |   |   |
|--|---|---|---|
| DIMENSIONS:<br><input type="checkbox"/> MM [INCH] <input type="checkbox"/> INCH [mm] <input checked="" type="checkbox"/> MM ONLY | CAD GENERATED DRAWING,<br>DO NOT MANUALLY UPDATE  |   | <b>Y-S ELECTRONIC CO., LTD.</b><br>No. 101, Sec. 1, Long-An Street,<br>Lu-Chu, Taoyuan, Taiwan, R.O.C.<br>TEL: +886-3-3609819 FAX: +886-3-3609817 |
|  | UNLESS OTHERWISE SPECIFIED,<br>GENERAL TOLERANCE:<br>DECIMALS      ANGLES<br>.X ±0.38 [0.015]    X° ±3°<br>.X ±0.25 [0.010]    .X° ±1.0°<br>.XX ±0.13 [0.005] | CHECKED BY AND DATE<br>JUSTIN XING 04-09-08 |   |
| MATERIAL   | APPROVED BY AND DATE<br>MICHAEL HUANG 04-09-08  | DRAWING NO.<br>158-25X2XX                   | REV<br>A  |
| FINISH   | SCALE:<br>1 : 1   | SIZE: A3                                    | FILE NO.:      SHEET 7 OF 8   |

THE INFORMATION CONTAINED IN THIS DOCUMENT IS PROPRIETARY TO Y-S ELECTRONIC. ANY REPRODUCTION IN PART OR WHOLE WITHOUT PRIOR WRITTEN APPROVAL OR AUTHORIZATION OF Y-S ELECTRONIC IS STRICTLY PROHIBITED.

RoHS COMPLIANT

| REVISIONS |         |             |             |      |
|-----------|---------|-------------|-------------|------|
| REV       | ECN NO. | DESCRIPTION | APPROVED BY | DATE |
|           |         |             |             |      |



Product Specification

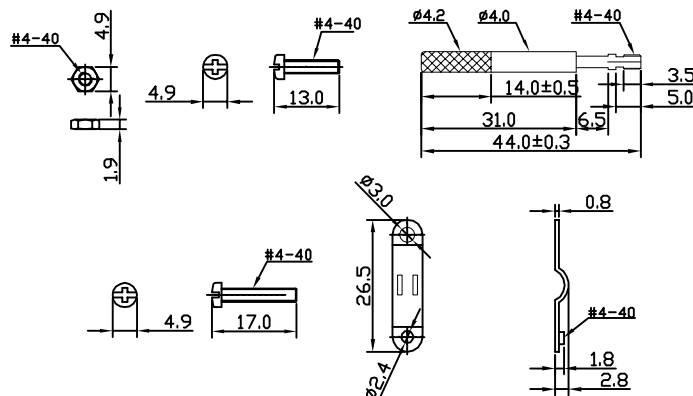
Material

Hood :ABS thermoplastic UL94V-0 rates  
 UL94V-0 rates  
 Screwlock :Steel, 100u' min Tin Plated.

Ordering Information

158 -  $\frac{XX}{a} \frac{X}{b} \frac{X}{c} \frac{X}{d} \frac{X}{e}$

- a. No. Of Pins
- b. Shell Type
  - 0: Plastic
  - 1: Nickel plate metalized
  - 2: Metal Hood(Die Cast)
- c. Screw Type
  - 1: Short screws with #4-40 unc
  - 2: Long screws with #4-40 unc
  - 3: Short screws with M3
  - 4: Long screws with M3
- d. Insulator Color
  - 1: Black
  - 2: Gray
  - 3: Beige
  - 4: Platinum
- e. Cable Entry
  - 1: 180°
  - 2: 90°
  - 3: 45°



Long Screw type  
 37pin type only

DO NOT SCALE DRAWING

|  |   |   |
|--|---|---|
| DIMENSIONS:<br><input type="checkbox"/> MM [INCH] <input type="checkbox"/> INCH [mm] <input checked="" type="checkbox"/> MM ONLY | CAD GENERATED DRAWING,<br>DO NOT MANUALLY UPDATE<br><br>DRAWN BY AND DATE<br>JAY ZHANG 04-09-08 | <b>Y-S ELECTRONIC CO., LTD.</b><br>No. 101, Sec. 1, Long-An Street,<br>Lu-Chu, Taoyuan, Taiwan, R.O.C.<br>TEL: +886-3-3609819 FAX: +886-3-3609817 |
|  |   |   |
| MATERIAL:  | CHECKED BY AND DATE<br>JUSTIN XING 04-09-08   | TITLE<br><br>158 SERIES<br>D-SUB COVER  |
| FINISH:  | APPROVED BY AND DATE<br>MICHAEL HUANG 04-09-08  | DRAWING NO.<br><br>158-37X2XX   |
| SCALE:<br>1 : 1  | SIZE: A3  | FILE NO.:   |
| THIRD ANGLE PROJECTION<br>   | SHEET 8 OF 8  | REV<br>A  |