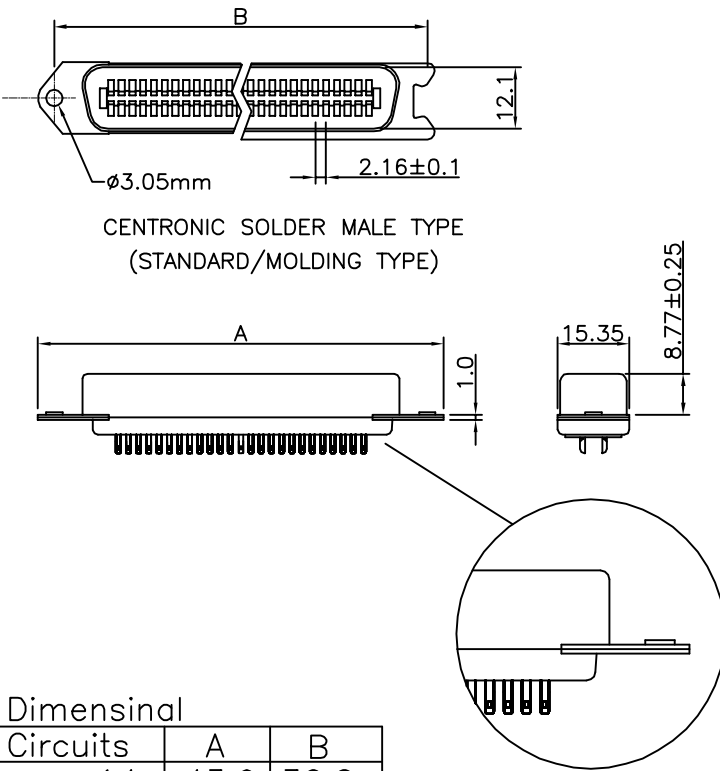


THE INFORMATION CONTAINED IN THIS DOCUMENT IS PROPRIETARY TO Y-S ELECTRONIC, ANY REPRODUCTION IN PART OR WHOLE WITHOUT PRIOR WRITTEN APPROVAL OR AUTHORIZATION OF Y-S ELECTRONIC IS STRICTLY PROHIBITED.

RoHS COMPLIANT

REVISIONS				
REV	ECN NO.	DESCRIPTION	APPROVED BY	DATE

Material & finish
 SHELL: Steel
 Zinc plated, Tin plated
 or Nickel plated steel
 PIN CONTACT:
 Phosphor bronze or brass/Gold plated
 INSULATOR:
 PBT & Glass-fibre reinforced
 UL 94V-0
 NUMBER OF CONTACT:
 14,24,36,50
 CURRENT RATING: 5 Amp
 DIELECTRIC STRENGTH:
 1000V for one minute
 INSULATOR RESISTANCE:
 1000M ΩMin. (at 500V DC)
 TEMPERATURE: -55°C to +105°C



CENTRONIC SOLDER MALE TYPE
(STANDARD/MOLDING TYPE)

Ordering Information


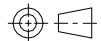
139 - $\frac{XX}{a} \frac{X}{b} \frac{X}{c} \frac{X}{d} \frac{X}{e} \frac{X}{f}$

- a. No. of Pins
 14: 14 positions
 24: 24 positions
 36: 36 positions
 50: 50 positions
- b. Contact Type
 1. Male (Standard)
 2. Female (w/o clips)
 3. Male (Molding Type)
 4. Female (w/clips)
- c. Finish on Terminal
 0: Gold Flash Selective Gold(standard)
 1: 15u' Selective Gold on Contact
 2: 30u' Selective Gold on Contact
- d. Insulator Color
 1: Blue (standard)
 2: Black
 3: Blue (standard) new type
 4: Black new type
- e. Flange Mounting
 0: Clear Hole 3.05mm
 1: with #4-40, 3mm Hex Nut on Front Shell
 2: with #4-40, 4mm Hex Nut on Front Shell
 3: with #4-40, 5.8mm Hex Nut on Front Shell
- f. Shell Plating
 0: Zinc
 1: Nickel
 2: Tin(standard)

Dimensional

Circuits	A	B
14	43.9	36.0
24	54.7	46.8
36	67.7	59.7
50	82.8	74.9

DO NOT SCALE DRAWING

DIMENSIONS: <input type="checkbox"/> MM [INCH] <input type="checkbox"/> INCH [mm] <input checked="" type="checkbox"/> MM ONLY	CAD GENERATED DRAWING, DO NOT MANUALLY UPDATE	 Y-S ELECTRONIC CO., LTD. No. 101, Sec. 1, Long-An Street, Lu-Chu, Taoyuan, Taiwan, R.O.C. TEL: +886-3-3609819 FAX: +886-3-3609817	
	UNLESS OTHERWISE SPECIFIED, GENERAL TOLERANCE: DECIMALS ANGLES X: ±0.38 [0.015] X°: ±3° .X: ±0.25 [0.010] .X°: ±1.0° .XX: ±0.13 [0.005]		DRAWN BY AND DATE JUSTIN XING 07-03-06
MATERIAL: _____ FINISH: _____	CHECKED BY AND DATE JUSTIN XING 07-03-06 APPROVED BY AND DATE MICHAEL HUANG 07-03-06 THIRD ANGLE PROJECTION 	DRAWING NO. 139-XXXXXXX	REV A
SCALE: 1 : 1	SIZE: A3	FILE NO.: _____	SHEET 1 OF 1

THE INFORMATION CONTAINED IN THIS DOCUMENT IS PROPRIETARY TO Y-S ELECTRONIC. ANY REPRODUCTION IN PART OR WHOLE WITHOUT PRIOR WRITTEN APPROVAL OR AUTHORIZATION OF Y-S ELECTRONIC IS STRICTLY PROHIBITED.

RoHS COMPLIANT

REVISIONS				
REV	ECN NO.	DESCRIPTION	APPROVED BY	DATE

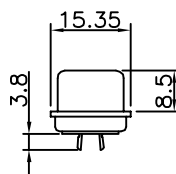
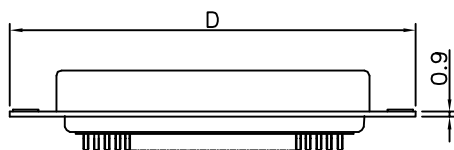
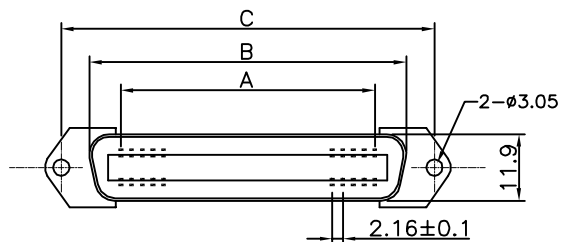
Material & finish

SHELL: Steel
 Zinc plated, Tin plated
 or Nickel plated steel
 PIN CONTACT:
 Phosphor bronze or brass/Gold plated
 INSULATOR:
 PBT & Glass-fibre reinforced
 UL 94V-0
 NUMBER OF CONTACT:
 14,24,36,50
 CURRENT RATING: 5 Amp
 DIELECTRIC STRENGTH:
 1000V for one minute
 INSULATOR RESISTANCE:
 1000M ΩMin. (at 500V DC)
 TEMPERATURE: -55°C to +105°C

Ordering Information

139 - $\frac{XX}{a} \frac{X}{b} \frac{X}{c} \frac{X}{d} \frac{X}{e} \frac{X}{f}$


- a. No. Of Pins
 14: 14 positions
 24: 24 positions
 36: 36 positions
 50: 50 positions
- b. Contact Type
 1. Male (Standard)
 2. Female (w/o clips)
 3. Male (Molding Type)
 4. Female (w/clips)
- c. Finish on Terminal
 0: Gold Flash Selective Gold(standard)
 1: 15u" Selective Gold on Contact
 2: 30u" Selective Gold on Contact
- d. Insulator Color
 1: Blue (standard)
 2: Black
 3: Blue (standard) new type
 4: Black new type
- e. Flange Mounting
 0: Clear Hole 3.05mm
 1: with #4-40, 3mm Hex Nut on Front Shell
 2: with #4-40, 4mm Hex Nut on Front Shell
 3: with #4-40, 5.8mm Hex Nut on Front Shell
- f. Shell Plating
 0: Zinc
 1: Nickel
 2: Tin(standard)



CENTRONIC SOLDER FEMALE TYPE

Positions	A	B	C	D
14	12.96	25.2	36.0	43.9
24	23.76	36.0	46.8	54.7
36	36.72	48.9	59.7	67.7
50	51.84	64.1	74.9	82.8

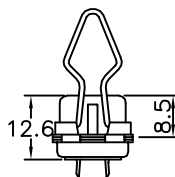
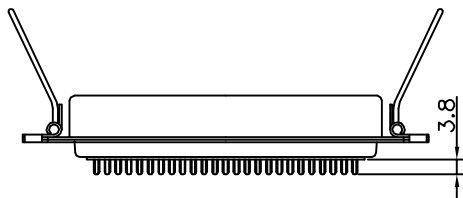
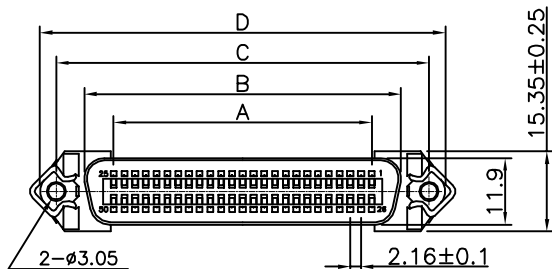
DO NOT SCALE DRAWING

DIMENSIONS: <input type="checkbox"/> MM [INCH] <input type="checkbox"/> INCH [mm] <input checked="" type="checkbox"/> MM ONLY	CAD GENERATED DRAWING, DO NOT MANUALLY UPDATE	 Y-S ELECTRONIC CO., LTD. No. 101, Sec. 1, Long-An Street, Lu-Chu, Taoyuan, Taiwan, R.O.C. TEL: +886-3-3609819 FAX: +886-3-3609817
	UNLESS OTHERWISE SPECIFIED, GENERAL TOLERANCE: DECIMALS ANGLES X: ±0.38 [0.015] X°: ±3° .X: ±0.25 [0.010] .X°: ±1.0° .XX: ±0.13 [0.005]	
MATERIAL: _____ FINISH: _____	CHECKED BY AND DATE JUSTIN XING 07-03-06 APPROVED BY AND DATE KING CHIU 07-03-06 THIRD ANGLE PROJECTION	DRAWING NO. 139-XXXXXXX
SCALE: 1 : 1	SIZE: A3	REV A
FILE NO.: _____		SHEET 1 OF 1

THE INFORMATION CONTAINED IN THIS DOCUMENT IS PROPRIETARY TO Y-S ELECTRONIC, ANY REPRODUCTION IN PART OR WHOLE WITHOUT PRIOR WRITTEN APPROVAL OR AUTHORIZATION OF Y-S ELECTRONIC IS STRICTLY PROHIBITED.

RoHS COMPLIANT

REVISIONS				
REV	ECN NO.	DESCRIPTION	APPROVED BY	DATE



CENTRONIC SOLDER FEMALE TYPE
WITH SPRING LATCH

Material & finish

SHELL: Steel
Zinc plated, Tin plated
or Nickel plated steel
PIN CONTACT:
Phosphor bronze or brass/Gold plated
INSULATOR:
PBT & Glass-fibre reinforced
UL 94V-0
NUMBER OF CONTACT:
14,24,36,50
CURRENT RATING: 5 Amp
DIELECTRIC STRENGTH:
1000V for one minute
INSULATOR RESISTANCE:
1000M ΩMin. (at 500V DC)
TEMPERATURE: -55°C to +105°C

Ordering Information

139 - $\frac{XX}{a}$ $\frac{X}{b}$ $\frac{X}{c}$ $\frac{X}{d}$ $\frac{X}{e}$ $\frac{X}{f}$

- a. No. Of Pins
14: 14 positions
24: 24 positions
36: 36 positions
50: 50 positions
- b. Contact Type
1. Male (Standard)
2. Female (w/o clips)
3. Male (Molding Type)
4. Female (w/clips)
- c. Finish on Terminal
0: Gold Flash Selective Gold(standard)
1: 15u" Selective Gold on Contact
2: 30u" Selective Gold on Contact
- d. Insulator Color
1: Blue (standard)
2: Black
3: Blue (standard) new type
4: Black new type
- e. Flange Mounting
0: Clear Hole 3.05mm
1: with #4-40, 3mm Hex Nut on Front Shell
2: with #4-40, 4mm Hex Nut on Front Shell
3: with #4-40, 5.8mm Hex Nut on Front Shell
- f. Shell Plating
0: Zinc
1: Nickel
2: Tin(standard)

Positions	A	B	C	D
14	12.96	25.2	36.0	44.1
24	23.76	36.0	46.8	54.9
36	36.72	48.9	59.7	67.9
50	51.84	64.1	74.9	83.0

DO NOT SCALE DRAWING

DIMENSIONS: <input type="checkbox"/> MM [INCH] <input type="checkbox"/> INCH [mm] <input checked="" type="checkbox"/> MM ONLY	CAD GENERATED DRAWING, DD NOT MANUALLY UPDATE	Y-S ELECTRONIC CO., LTD. No. 101, Sec. 1, Long-An Street, Lu-Chu, Taoyuan, Taiwan, R.O.C. TEL: +886-3-3609819 FAX: +886-3-3609817	
	UNLESS OTHERWISE SPECIFIED, GENERAL TOLERANCE: DECIMALS ANGLES X: ±0.38 [0.015] X°: ±3° .X: ±0.25 [0.010] .X°: ±1.0° .XX: ±0.13 [0.005]		DRAWN BY AND DATE JUSTIN XING 07-03-06 CHECKED BY AND DATE JUSTIN XING 07-03-06 APPROVED BY AND DATE KING CHIU 07-03-06 THIRD ANGLE PROJECTION
MATERIAL		DRAWING NO.	REV
FINISH		SCALE: 1:1 SIZE: A3	139-XX4XXXX
FILE NO.:		SHEET 1 OF 1	