

THE INFORMATION CONTAINED IN THIS DOCUMENT IS PROPRIETARY TO Y-S ELECTRONIC, ANY REPRODUCTION IN PART OR WHOLE WITHOUT PRIOR WRITTEN APPROVAL OR AUTHORIZATION OF Y-S ELECTRONIC IS STRICTLY PROHIBITED.

RoHS COMPLIANT

REVISIONS

REV	ECN NO.	DESCRIPTION	APPROVED BY	DATE

Product Specification

MATERIAL

INSULATOR: GLASS-REINFORCED THERMOPLASTIC.
CONTACT: COPPER ALLOY.

ELECTRICAL

VOLTAGE RATING: 250 VAC RMS.
CURRENT RATING: 1 AMP.
DIELECTRIC WITHSTANDING VOLTAGE: 500 VAC RMS 60Hz

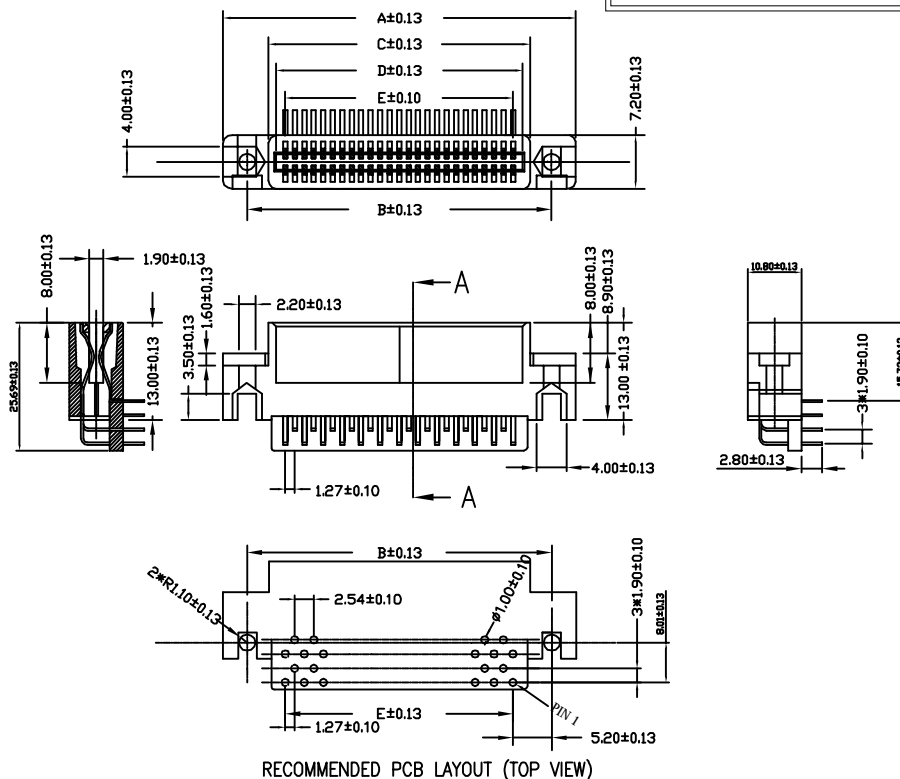
INSULATION RESISTANCE: 1000 MEGOHMS MIN AT 500 VDC.
CONTACT RESISTANCE: 30 MILLIOHMS MAX.

MECHANICAL

RETENTION FORCE: 460 GRAMS MIN PER CONTACT.
INSERTION FORCE: 230 GRAMS MAX PER CONTACT PAIR.
WITHDRAWAL FORCE: 15 GRAMS MIN PER CONTACT PAIR.

ENVIRONMENTAL

TEMPERATURE RANGE: -55°C TO +85°C.



RECOMMENDED PCB LAYOUT (TOP VIEW)

1.27 PITCH CARD EDGE ROW GAP 1.90mm R/A
WITH MOUNTING EAR

Ordering Information

136 - $\frac{XXX}{a} \times \frac{X}{b} \times \frac{X}{c}$

- a. No. Of Pins
- b. Contact Plating
 - 0: Gold flash selective gold
 - 1: 5u" selective gold on contact
 - 2: 10u" selective gold on contact
 - 3: 15u" selective gold on contact
 - 4: 30u" selective gold on contact
 - 5: 50u" selective gold on contact
 - 6: Gold flash full gold
- c: Terminal Type
 - 0: Row gap 1.90mm R/A with mounting ear
 - 1: Row gap 1.90mm with mounting ear
 - 2: Row gap 1.90mm SMT with mounting ear
 - 3: Card edge(a type) w/o mounting ear
 - 4: Card edge(b type) w/o mounting ear
 - 5: Card edge dip post w/o mounting ear
 - 6: Card edge r/a clip w/o mounting ear
 - 7: Card edge r/a type w/o mounting ear
 - 8: Card edge smt type w/o mounting ear
 - 9: Card edge type w/o mounting ear

PIN	DIMENSION					PIN	DIMENSION				
	A	B	C	D	E		A	B	C	D	E
10	21.85	15.35	9.60	7.62	5.08	56	51.06	44.56	38.81	36.83	34.29
12	23.12	16.62	10.87	8.89	6.35	60	53.60	47.10	41.35	39.37	36.83
18	26.93	20.43	14.68	12.70	10.16	62	54.87	48.37	42.62	40.64	38.10
20	28.20	21.70	15.95	13.97	11.43	64	56.14	49.64	43.89	41.91	39.37
22	29.47	22.97	17.22	15.24	12.70	68	58.68	52.18	46.43	44.45	41.91
28	33.28	26.78	21.03	19.05	16.51	70	59.95	53.45	47.70	45.72	43.18
30	34.55	28.05	22.30	20.32	17.78	72	61.22	54.72	48.97	46.99	44.45
32	35.82	29.32	23.57	21.59	19.05	80	66.30	59.80	54.05	52.07	49.53
34	37.09	30.59	24.84	22.86	20.32	90	72.65	66.15	60.40	58.42	55.88
36	38.36	31.86	26.11	24.13	21.59	98	77.73	71.23	65.48	63.50	60.96
38	39.63	33.13	27.38	25.40	22.86	100	79.00	72.50	66.75	64.77	62.23
40	40.90	34.40	28.65	26.67	24.13	110	85.35	78.85	73.10	71.12	68.58
42	42.17	35.67	29.92	27.94	25.40	112	86.62	80.12	74.37	72.39	69.85
44	43.44	36.94	31.19	29.21	26.67	120	91.70	85.20	79.45	77.47	74.93
46	44.71	38.21	32.46	30.48	27.94	124	94.24	87.74	81.99	80.01	77.47
48	45.98	39.48	33.73	31.75	29.21	164	119.64	113.14	107.39	105.41	102.87
50	47.25	40.75	35.00	33.02	30.48	184	132.34	125.84	120.09	118.11	115.57

DIMENSIONS: <input type="checkbox"/> MM [INCH] <input type="checkbox"/> INCH [mm] <input checked="" type="checkbox"/> MM ONLY	CAD GENERATED DRAWING, DO NOT MANUALLY UPDATE DRAWN BY AND DATE JUSTIN XING 07-03-06	Y-S ELECTRONIC CO., LTD. No. 101, Sec. 1, Long-An Street, Lu-Chu, Taoyuan, Taiwan, R.O.C. TEL: +886-3-3609819 FAX: +886-3-3609817
MATERIAL FINISH	SCALE: 1.5 : 1 SIZE: A3	DRAWING NO. 136-XXXX0 REV A
FILE NO.:		SHEET 1 OF 10

DO NOT SCALE DRAWING

THE INFORMATION CONTAINED IN THIS DOCUMENT IS PROPRIETARY TO Y-S ELECTRONIC, ANY REPRODUCTION IN PART OR WHOLE WITHOUT PRIOR WRITTEN APPROVAL OR AUTHORIZATION OF Y-S ELECTRONIC IS STRICTLY PROHIBITED.

RoHS COMPLIANT

REVISIONS

REV	ECN NO.	DESCRIPTION	APPROVED BY	DATE

Product Specification

MATERIAL

INSULATOR: GLASS-REINFORCED THERMOPLASTIC.
CONTACT: COPPER ALLOY.

ELECTRICAL

VOLTAGE RATING: 250 VAC RMS.
CURRENT RATING: 1 AMP.
DIELECTRIC WITHSTANDING VOLTAGE: 500 VAC RMS 60Hz

INSULATION RESISTANCE: 1000 MEGOHMS MIN AT 500 VDC.
CONTACT RESISTANCE: 30 MILLIOHMS MAX.

MECHANICAL

RETENTION FORCE: 460 GRAMS MIN PER CONTACT.
INSERTION FORCE: 230 GRAMS MAX PER CONTACT PAIR.
WITHDRAWAL FORCE: 15 GRAMS MIN PER CONTACT PAIR.

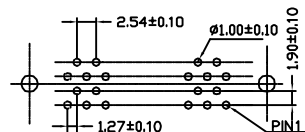
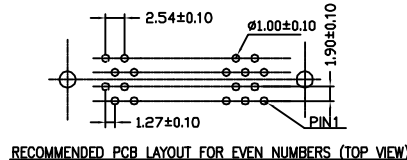
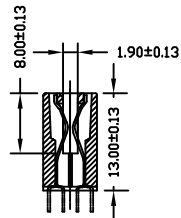
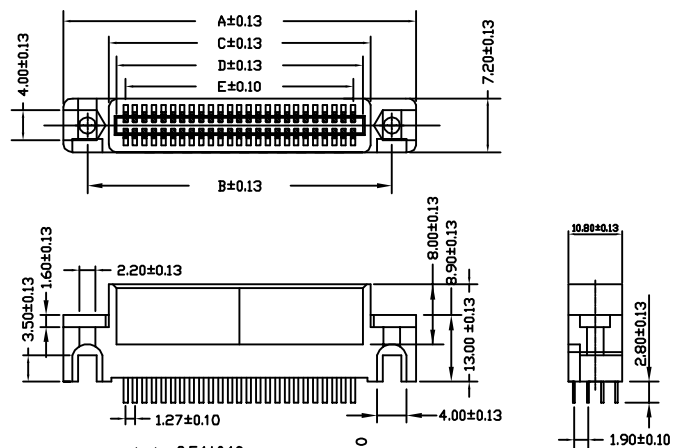
ENVIRONMENTAL

TEMPERATURE RANGE: -55°C TO +85°C.

Ordering Information

$$136 - \frac{XXX}{a} \frac{X}{b} \frac{X}{c}$$

- a. No. Of Pins
- b. Contact Plating
 - 0: Gold Flash selective gold
 - 1: 5u' selective gold on contact
 - 2: 10u' selective gold on contact
 - 3: 15u' selective gold on contact
 - 4: 30u' selective gold on contact
 - 5: 50u' selective gold on contact
 - 6: Gold Flash full gold
- c. Terminal Type
 - 0: Row gap 1.90mm R/A with mounting ear
 - 1: Row gap 1.90mm with mounting ear
 - 2: Row gap 1.90mm SMT with mounting ear
 - 3: Card edge(a type) w/o mounting ear
 - 4: Card edge(b type) w/o mounting ear
 - 5: Card edge dip post w/o mounting ear
 - 6: Card edge r/a clip w/o mounting ear
 - 7: Card edge r/a type w/o mounting ear
 - 8: Card edge smt type w/o mounting ear
 - 9: Card edge type w/o mounting ear



1.27 PITCH CARD EDGE ROW GAP 1.90mm
WITH MOUNTING EAR

PIN	DIMENSION					PIN	DIMENSION				
	A	B	C	D	E		A	B	C	D	E
10	21.85	15.35	9.60	7.62	5.08	56	51.06	44.56	38.81	36.83	34.29
12	23.12	16.62	10.87	8.89	6.35	60	53.60	47.10	41.35	39.37	36.83
18	26.93	20.43	14.68	12.70	10.16	62	54.87	48.37	42.62	40.64	38.10
20	28.20	21.70	15.95	13.97	11.43	64	56.14	49.64	43.89	41.91	39.37
22	29.47	22.97	17.22	15.24	12.70	68	58.68	52.18	46.43	44.45	41.91
28	33.28	26.78	21.03	19.05	16.51	70	59.95	53.45	47.70	45.72	43.18
30	34.55	28.05	22.30	20.32	17.78	72	61.22	54.72	48.97	46.99	44.45
32	35.82	29.32	23.57	21.59	19.05	80	66.30	59.80	54.05	52.07	49.53
34	37.09	30.59	24.84	22.86	20.32	90	72.65	66.15	60.40	58.42	55.88
36	38.36	31.86	26.11	24.13	21.59	98	77.73	71.23	65.48	63.50	60.96
38	39.63	33.13	27.38	25.40	22.86	100	79.00	72.50	66.75	64.77	62.23
40	40.90	34.40	28.65	26.67	24.13	110	85.35	78.85	73.10	71.12	68.58
42	42.17	35.67	29.92	27.94	25.40	112	86.62	80.12	74.37	72.39	69.85
44	43.44	36.94	31.19	29.21	26.67	120	91.70	85.20	79.45	77.47	74.93
46	44.71	38.21	32.46	30.48	27.94	124	94.24	87.74	81.99	80.01	77.47
48	45.98	39.48	33.73	31.75	29.21	164	119.64	113.14	107.39	105.41	102.87
50	47.25	40.75	35.00	33.02	30.48	184	132.34	125.84	120.09	118.11	115.57

DO NOT SCALE DRAWING

DIMENSIONS: <input type="checkbox"/> MM [INCH] <input type="checkbox"/> INCH [mm] <input checked="" type="checkbox"/> MM ONLY	CAD GENERATED DRAWING, DO NOT MANUALLY UPDATE
UNLESS OTHERWISE SPECIFIED, GENERAL TOLERANCE: DECIMALS X: ±0.38 [0.015] ANGLES .X: ±0.25 [0.010] X° ±3° .XX ±0.13 [0.005] .X° ±1.0°	CHECKED BY AND DATE JUSTIN XING 07-03-06 APPROVED BY AND DATE MICHAEL HUANG 07-03-06 THIRD ANGLE PROJECTION
MATERIAL	
FINISH	SCALE: 1.5 : 1 SIZE: A3

	Y-S ELECTRONIC CO., LTD. No. 101, Sec. 1, Long-An Street, Lu-Chu, Taoyuan, Taiwan, R.O.C. TEL: +886-3-3609819 FAX: +886-3-3609817	
	TITLE 136 SERIES EDGE CARD CONNECTOR 1.27MM (0.050")	
DRAWING NO. 136-XXXX1	REV A	FILE NO. SHEET 2 OF 10

THE INFORMATION CONTAINED IN THIS DOCUMENT IS PROPRIETARY TO Y-S ELECTRONIC, ANY REPRODUCTION IN PART OR WHOLE WITHOUT PRIOR WRITTEN APPROVAL OR AUTHORIZATION OF Y-S ELECTRONIC IS STRICTLY PROHIBITED.

RoHS COMPLIANT

REVISIONS				
REV	ECN NO.	DESCRIPTION	APPROVED BY	DATE

Product Specification

MATERIAL

INSULATOR: GLASS-REINFORCED THERMOPLASTIC.
CONTACT: COPPER ALLOY.

ELECTRICAL

VOLTAGE RATING: 250 VAC RMS.
CURRENT RATING: 1 AMP.
DIELECTRIC WITHSTANDING VOLTAGE: 500 VAC RMS 60Hz

INSULATION RESISTANCE: 1000 MEGOHMS MIN AT 500 VDC.
CONTACT RESISTANCE: 30 MILLIOHMS MAX.

MECHANICAL

RETENTION FORCE: 460 GRAMS MIN PER CONTACT.
INSERTION FORCE: 230 GRAMS MAX PER CONTACT PAIR.
WITHDRAWAL FORCE: 15 GRAMS MIN PER CONTACT PAIR.

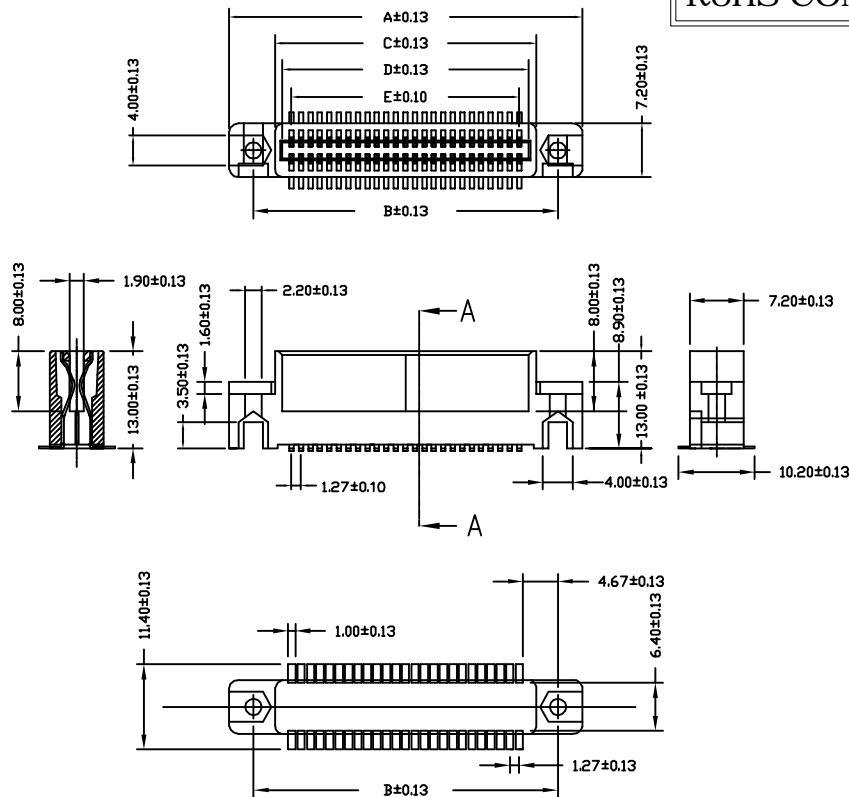
ENVIRONMENTAL

TEMPERATURE RANGE: -55°C TO +85°C.

Ordering Information


136 - $\frac{XXX}{a} \frac{X}{b} \frac{X}{c}$

- a. No. Of Pins
- b. Contact Plating
 - 0: Gold flash selective gold
 - 1: 5u" selective gold on contact
 - 2: 10u" selective gold on contact
 - 3: 15u" selective gold on contact
 - 4: 30u" selective gold on contact
 - 5: 50u" selective gold on contact
 - 6: Gold flash full gold
- c: Terminal Type
 - 0: Row gap 1.90mm R/A with mounting ear
 - 1: Row gap 1.90mm with mounting ear
 - 2: Row gap 1.90mm SMT with mounting ear
 - 3: Card edge(a type) w/o mounting ear
 - 4: Card edge(b type) w/o mounting ear
 - 5: Card edge dip post w/o mounting ear
 - 6: Card edge r/a clip w/o mounting ear
 - 7: Card edge r/a type w/o mounting ear
 - 8: Card edge smt type w/o mounting ear
 - 9: Card edge type w/o mounting ear



1.27 PITCH CARD EDGE ROW GAP 1.90mm SMT WITH MOUNTING EAR

PIN	DIMENSION					PIN	DIMENSION				
	A	B	C	D	E		A	B	C	D	E
10	21.85	15.35	9.60	7.62	5.08	56	51.06	44.56	38.81	36.83	34.29
12	23.12	16.62	10.87	8.89	6.35	60	53.60	47.10	41.35	39.37	36.83
18	26.93	20.43	14.68	12.70	10.16	62	54.87	48.37	42.62	40.64	38.10
20	28.20	21.70	15.95	13.97	11.43	64	56.14	49.64	43.89	41.91	39.37
22	29.47	22.97	17.22	15.24	12.70	68	58.68	52.18	46.43	44.45	41.91
28	33.28	26.78	21.03	19.05	16.51	70	59.95	53.45	47.70	45.72	43.18
30	34.55	28.05	22.30	20.32	17.78	72	61.22	54.72	48.97	46.99	44.45
32	35.82	29.32	23.57	21.59	19.05	80	66.30	59.80	54.05	52.07	49.53
34	37.09	30.59	24.84	22.86	20.32	90	72.65	66.15	60.40	58.42	55.88
36	38.36	31.86	26.11	24.13	21.59	98	77.73	71.23	65.48	63.50	60.96
38	39.63	33.13	27.38	25.40	22.86	100	79.00	72.50	66.75	64.77	62.23
40	40.90	34.40	28.65	26.67	24.13	110	85.35	78.85	73.10	71.12	68.58
42	42.17	35.67	29.92	27.94	25.40	112	86.62	80.12	74.37	72.39	69.85
44	43.44	36.94	31.19	29.21	26.67	120	91.70	85.20	79.45	77.47	74.93
46	44.71	38.21	32.46	30.48	27.94	124	94.24	87.74	81.99	80.01	77.47
48	45.98	39.48	33.73	31.75	29.21	164	119.64	113.14	107.39	105.41	102.87
50	47.25	40.75	35.00	33.02	30.48	184	132.34	125.84	120.09	118.11	115.57

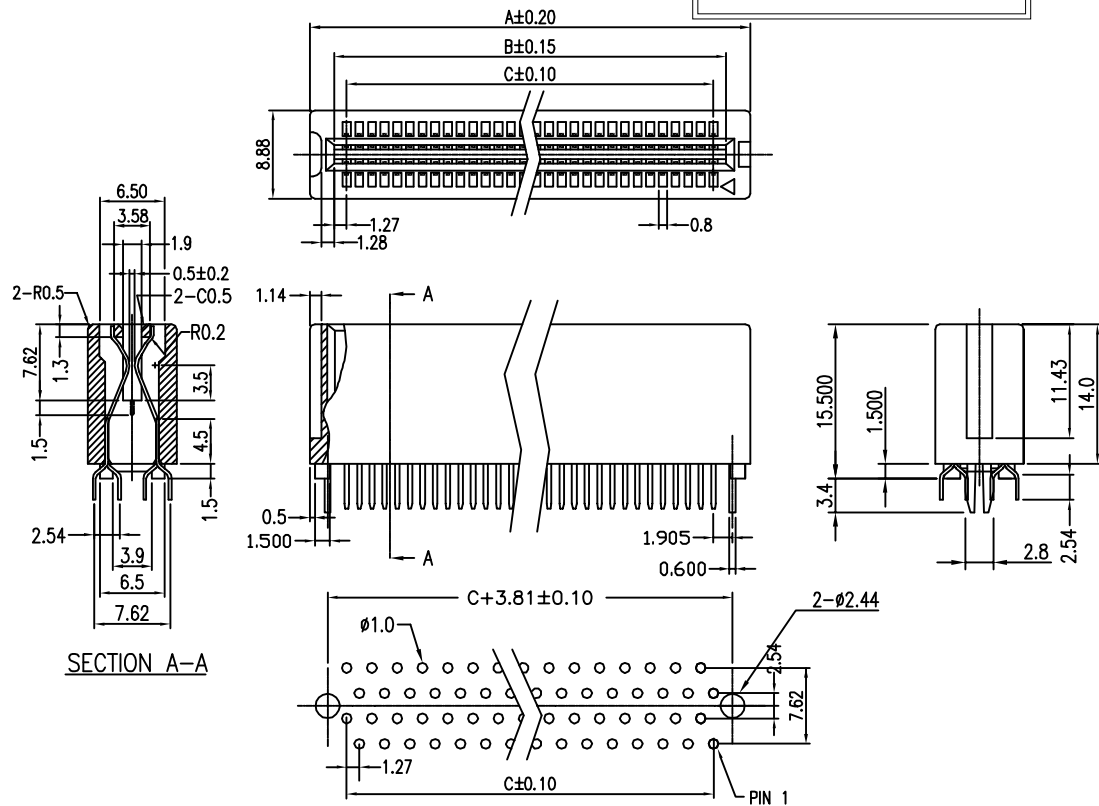
DIMENSIONS: <input type="checkbox"/> MM [INCH] <input type="checkbox"/> INCH [mm] <input checked="" type="checkbox"/> MM ONLY	CAD GENERATED DRAWING, DO NOT MANUALLY UPDATE DRAWN BY AND DATE JUSTIN XING 07-03-06	 Y-S ELECTRONIC CO., LTD. No. 101, Sec. 1, Long-An Street, Lu-Chu, Taoyuan, Taiwan, R.O.C. TEL: +886-3-3609819 FAX: +886-3-3609817
	UNLESS OTHERWISE SPECIFIED, GENERAL TOLERANCE: DECIMALS X: ±0.38 [0.015] ANGLES .X: ±0.25 [0.010] X*: ±3° .XX: ±0.13 [0.005] .X*: ±1.0°	
MATERIAL FINISH	SCALE: 1.5 : 1 SIZE: A3	DRAWING NO. 136-XXXX2 REV A
FILE NO.:		SHEET 3 OF 10

DO NOT SCALE DRAWING

THE INFORMATION CONTAINED IN THIS DOCUMENT IS PROPRIETARY TO Y-S ELECTRONIC, ANY REPRODUCTION IN PART OR WHOLE WITHOUT PRIOR WRITTEN APPROVAL OR AUTHORIZATION OF Y-S ELECTRONIC IS STRICTLY PROHIBITED.

RoHS COMPLIANT

REVISIONS				
REV	ECN NO.	DESCRIPTION	APPROVED BY	DATE



Product Specification

MATERIAL

INSULATOR: GLASS-REINFORCED THERMOPLASTIC.
CONTACT: COPPER ALLOY.

ELECTRICAL

VOLTAGE RATING: 250 VAC RMS.
CURRENT RATING: 1 AMP.
DIELECTRIC WITHSTANDING VOLTAGE: 500 VAC RMS 60Hz

INSULATION RESISTANCE: 1000 MEGOHMS MIN AT 500 VDC.
CONTACT RESISTANCE: 30 MILLIOHMS MAX.

MECHANICAL

RETENTION FORCE: 460 GRAMS MIN PER CONTACT.
INSERTION FORCE: 230 GRAMS MAX PER CONTACT PAIR.
WITHDRAWAL FORCE: 15 GRAMS MIN PER CONTACT PAIR.

ENVIRONMENTAL

TEMPERATURE RANGE: -55°C TO +85°C.

Ordering Information


136 - $\frac{XXX}{a} \frac{X}{b} \frac{X}{c}$

- a. No. Of Pins
b. Contact Plating
0: Gold flash selective gold
1: 5u" selective gold on contact
2: 10u" selective gold on contact
3: 15u" selective gold on contact
4: 30u" selective gold on contact
5: 50u" selective gold on contact
6: Gold flash full gold
c: Terminal Type
0: Row gap 1.90mm R/A with mounting ear
1: Row gap 1.90mm with mounting ear
2: Row gap 1.90mm SMT with mounting ear
3: Card edge(a type) w/o mounting ear
4: Card edge(b type) w/o mounting ear
5: Card edge dip post w/o mounting ear
6: Card edge r/a clip w/o mounting ear
7: Card edge r/a type w/o mounting ear
8: Card edge smt type w/o mounting ear
9: Card edge type w/o mounting ear

1.27 PITCH CARD EDGE(A TYPE)W/O MOUNTING EAR

Circuit	Dimension			Circuit	Dimension		
	A	B	C		A	B	C
04	8.64	3.81	1.27	34	27.69	22.86	20.32
06	9.91	5.08	2.54	36	28.96	24.13	21.59
08	11.18	6.35	3.81	38	30.23	25.40	22.86
10	12.45	7.62	5.08	40	31.50	26.67	24.13
12	13.72	8.89	6.35	42	32.77	27.94	25.40
14	14.99	10.16	7.62	44	34.04	29.21	26.67
16	16.26	11.43	8.89	46	35.31	30.48	27.94
18	17.53	12.70	10.16	48	36.58	31.75	29.21
20	18.80	13.97	11.43	50	37.85	33.02	30.48
22	20.07	15.24	12.70	52	39.12	34.29	31.75
24	21.34	16.51	13.97	54	40.39	35.56	33.02
26	22.61	17.78	15.24	56	41.66	36.83	34.29
28	23.88	19.05	16.51	58	42.93	38.10	35.56
30	25.15	20.32	17.78	60	44.20	39.37	36.83
32	26.42	21.59	19.05	128	87.38	82.55	80.01

DO NOT SCALE DRAWING

DIMENSIONS: <input type="checkbox"/> MM [INCH] <input type="checkbox"/> INCH [mm] <input checked="" type="checkbox"/> MM ONLY	CAD GENERATED DRAWING, DO NOT MANUALLY UPDATE DRAWN BY AND DATE JUSTIN XING 07-03-06	 Y-S ELECTRONIC CO., LTD. No. 101, Sec. 1, Long-An Street, Lu-Chu, Taoyuan, Taiwan, R.O.C. TEL: +886-3-3609819 FAX: +886-3-3609817	
			UNLESS OTHERWISE SPECIFIED, GENERAL TOLERANCE: DECIMALS X: ±0.38 [0.015] .X ±0.25 [0.010] .XX ±0.13 [0.005]
MATERIAL FINISH	SCALE: 2 : 1 SIZE: A3	DRAWING NO. 136-XXXX3 FILE NO.:	REV A SHEET 4 OF 10

THE INFORMATION CONTAINED IN THIS DOCUMENT IS PROPRIETARY TO Y-S ELECTRONIC, ANY REPRODUCTION IN PART OR WHOLE WITHOUT PRIOR WRITTEN APPROVAL OR AUTHORIZATION OF Y-S ELECTRONIC IS STRICTLY PROHIBITED.

RoHS COMPLIANT

REVISIONS				
REV	ECN NO.	DESCRIPTION	APPROVED BY	DATE

Product Specification

MATERIAL

INSULATOR: GLASS-REINFORCED THERMOPLASTIC.
CONTACT: COPPER ALLOY.

ELECTRICAL

VOLTAGE RATING: 250 VAC RMS.
CURRENT RATING: 1 AMP.
DIELECTRIC WITHSTANDING VOLTAGE: 500 VAC RMS 60Hz

INSULATION RESISTANCE: 1000 MEGOHMS MIN AT 500 VDC.
CONTACT RESISTANCE: 30 MILLIOHMS MAX.

MECHANICAL

RETENTION FORCE: 460 GRAMS MIN PER CONTACT.
INSERTION FORCE: 230 GRAMS MAX PER CONTACT PAIR.
WITHDRAWAL FORCE: 15 GRAMS MIN PER CONTACT PAIR.

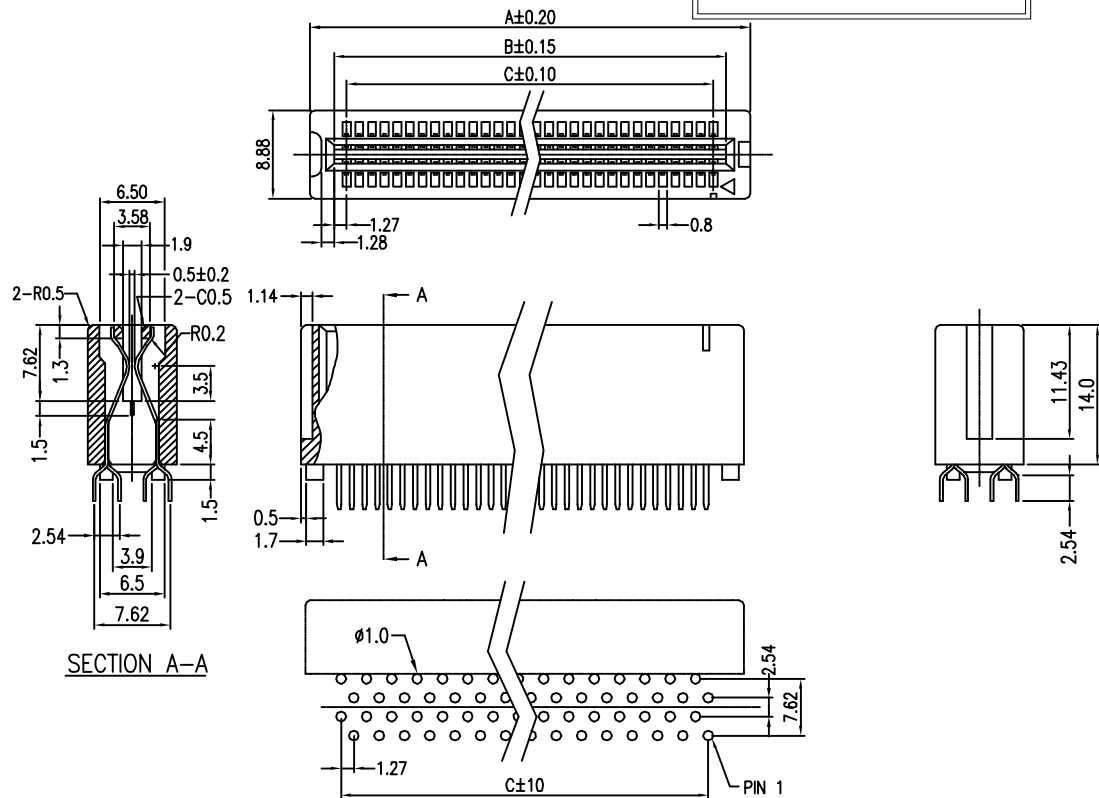
ENVIRONMENTAL

TEMPERATURE RANGE: -55°C TO +85°C.

Ordering Information

$$136 - \frac{XXX}{a} \frac{X}{b} \frac{X}{c}$$

- a. No. Of Pins
b. Contact Plating
0: Gold flash selective gold
1: 5u" selective gold on contact
2: 10u" selective gold on contact
3: 15u" selective gold on contact
4: 30u" selective gold on contact
5: 50u" selective gold on contact
6: Gold flash full gold
c: Terminal Type
0: Row gap 1.90mm R/A with mounting ear
1: Row gap 1.90mm with mounting ear
2: Row gap 1.90mm SMT with mounting ear
3: Card edge(a type) w/o mounting ear
4: Card edge(b type) w/o mounting ear
5: Card edge dip post w/o mounting ear
6: Card edge r/a clip w/o mounting ear
7: Card edge r/a type w/o mounting ear
8: Card edge smt type w/o mounting ear
9: Card edge type w/o mounting ear



1.27 PITCH CARD EDGE(B TYPE)W/O MOUNTING EAR

Circuit	Dimension			Circuit	Dimension		
	A	B	C		A	B	C
04	8.64	3.81	1.27	38	30.23	25.40	22.86
06	9.91	5.08	2.54	40	31.50	26.67	24.13
08	11.18	6.35	3.81	42	32.77	27.94	25.40
10	12.45	7.62	5.08	44	34.04	29.21	26.67
12	13.72	8.89	6.35	46	35.31	30.48	27.94
14	14.99	10.16	7.62	48	36.58	31.75	29.21
16	16.26	11.43	8.89	50	37.85	33.02	30.48
18	17.53	12.70	10.16	52	39.12	34.29	31.75
20	18.80	13.97	11.43	54	40.39	35.56	33.02
22	20.07	15.24	12.70	56	41.66	36.83	34.29
24	21.34	16.51	13.97	58	42.93	38.10	35.56
26	22.61	17.78	15.24	60	44.20	39.37	36.83
28	23.88	19.05	16.51	80	56.90	52.07	49.53
30	25.15	20.32	17.78	100	69.60	64.77	62.23
32	26.42	21.59	19.05	120	82.30	77.47	74.93
34	27.69	22.86	20.32	124	84.84	80.01	77.47
36	28.96	24.13	21.59	182	121.67	116.84	114.30

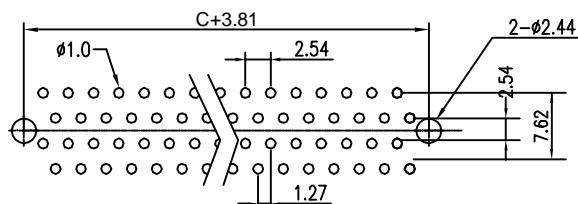
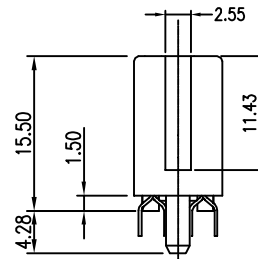
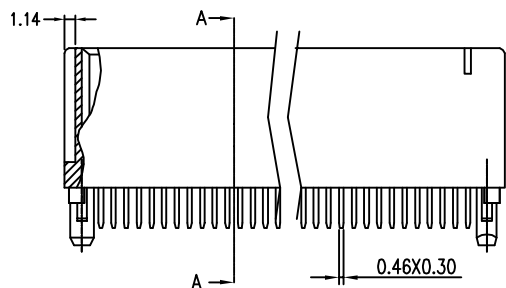
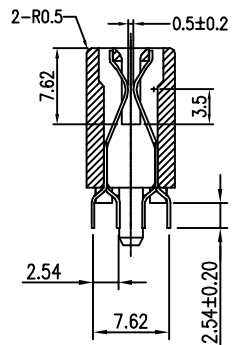
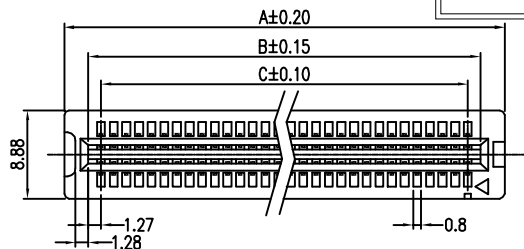
DO NOT SCALE DRAWING

DIMENSIONS: <input type="checkbox"/> MM [INCH] <input type="checkbox"/> INCH [mm] <input checked="" type="checkbox"/> MM ONLY	CAD GENERATED DRAWING, DO NOT MANUALLY UPDATE	Y-S ELECTRONIC CO., LTD. No. 101, Sec. 1, Long-An Street, Lu-Chu, Taoyuan, Taiwan, R.O.C. TEL: +886-3-3609819 FAX: +886-3-3609817	
	UNLESS OTHERWISE SPECIFIED, GENERAL TOLERANCE: DECIMALS X: ±0.38 [0.015] ANGLES X° ±3° .X ±0.25 [0.010] .X° ±1.0° .XX ±0.13 [0.005]		CHECKED BY AND DATE JUSTIN XING 07-03-06 APPROVED BY AND DATE MICHAEL HUANG 07-03-06 THIRD ANGLE PROJECTION
MATERIAL FINISH	SCALE: 2 : 1 SIZE: A3	DRAWING NO. 136-XXXX4	REV A
FILE NO.:		SHEET 5 OF 10	

THE INFORMATION CONTAINED IN THIS DOCUMENT IS PROPRIETARY TO Y-S ELECTRONIC, ANY REPRODUCTION IN PART OR WHOLE WITHOUT PRIOR WRITTEN APPROVAL OR AUTHORIZATION OF Y-S ELECTRONIC IS STRICTLY PROHIBITED.

RoHS COMPLIANT

REVISIONS				
REV	ECN NO.	DESCRIPTION	APPROVED BY	DATE



RECOMMENDED PCB LAYOUT (TOP VIEW)
1.27 PITCH CARD EDGE DIP POST W/O MOUNTING EAR

Product Specification

MATERIAL

INSULATOR: GLASS-REINFORCED THERMOPLASTIC.
CONTACT: COPPER ALLOY.

ELECTRICAL

VOLTAGE RATING: 250 VAC RMS.
CURRENT RATING: 1 AMP.
DIELECTRIC WITHSTANDING VOLTAGE: 500 VAC RMS 60Hz

INSULATION RESISTANCE: 1000 MEGOHMS MIN AT 500 VDC.
CONTACT RESISTANCE: 30 MILLIOHMS MAX.

MECHANICAL

RETENTION FORCE: 460 GRAMS MIN PER CONTACT.
INSERTION FORCE: 230 GRAMS MAX PER CONTACT PAIR.
WITHDRAWAL FORCE: 15 GRAMS MIN PER CONTACT PAIR.

ENVIRONMENTAL

TEMPERATURE RANGE: -55°C TO +85°C.

Ordering Information

136 - $\frac{XXX}{a} \frac{X}{b} \frac{X}{c}$

- a. No. Of Pins
b. Contact Plating
0: Gold flash selective gold
1: 5u" selective gold on contact
2: 10u" selective gold on contact
3: 15u" selective gold on contact
4: 30u" selective gold on contact
5: 50u" selective gold on contact
6: Gold flash full gold
c: Terminal Type
0: Row gap 1.90mm R/A with mounting ear
1: Row gap 1.90mm with mounting ear
2: Row gap 1.90mm SMT with mounting ear
3: Card edge(a type) w/o mounting ear
4: Card edge(b type) w/o mounting ear
5: Card edge dip post w/o mounting ear
6: Card edge r/a clip w/o mounting ear
7: Card edge r/a type w/o mounting ear
8: Card edge smt type w/o mounting ear
9: Card edge type w/o mounting ear

DO NOT SCALE DRAWING

Circuit	Dimension			Circuit	Dimension		
	A	B	C		A	B	C
04	8.64	3.81	1.27	34	27.69	22.86	20.32
06	9.91	5.08	2.54	36	28.96	24.13	21.59
08	11.18	6.35	3.81	38	30.23	25.40	22.86
10	12.45	7.62	5.08	40	31.50	26.67	24.13
12	13.72	8.89	6.35	42	32.77	27.94	25.40
14	14.99	10.16	7.62	44	34.04	29.21	26.67
16	16.26	11.43	8.89	46	35.31	30.48	27.94
18	17.53	12.70	10.16	48	36.58	31.75	29.21
20	18.80	13.97	11.43	50	37.85	33.02	30.48
22	20.07	15.24	12.70	52	39.12	34.29	31.75
24	21.34	16.51	13.97	54	40.39	35.56	33.02
26	22.61	17.78	15.24	56	41.66	36.83	34.29
28	23.88	19.05	16.51	58	42.93	38.10	35.56
30	25.15	20.32	17.78	124	84.84	80.01	77.47
32	26.42	21.59	19.05	128	87.38	82.55	80.01

DIMENSIONS: <input type="checkbox"/> MM [INCH] <input type="checkbox"/> INCH [mm] <input checked="" type="checkbox"/> MM ONLY	CAD GENERATED DRAWING, DO NOT MANUALLY UPDATE DRAWN BY AND DATE JUSTIN XING 07-03-06	Y-S ELECTRONIC CO., LTD. No. 101, Sec. 1, Long-An Street, Lu-Chu, Taoyuan, Taiwan, R.O.C. TEL: +886-3-3609819 FAX: +886-3-3609817
MATERIAL FINISH	SCALE: 2 : 1 SIZE: A3	DRAWING NO. 136-XXXX5 REV A
FILE NO.:		SHEET 6 OF 10

THE INFORMATION CONTAINED IN THIS DOCUMENT IS PROPRIETARY TO Y-S ELECTRONIC, ANY REPRODUCTION IN PART OR WHOLE WITHOUT PRIOR WRITTEN APPROVAL OR AUTHORIZATION OF Y-S ELECTRONIC IS STRICTLY PROHIBITED.

RoHS COMPLIANT

REVISIONS				
REV	ECN NO.	DESCRIPTION	APPROVED BY	DATE

Product Specification

MATERIAL

INSULATOR: GLASS-REINFORCED THERMOPLASTIC.
CONTACT: COPPER ALLOY.

ELECTRICAL

VOLTAGE RATING: 250 VAC RMS.
CURRENT RATING: 1 AMP.
DIELECTRIC WITHSTANDING VOLTAGE: 500 VAC RMS 60Hz

INSULATION RESISTANCE: 1000 MEGOHMS MIN AT 500 VDC.
CONTACT RESISTANCE: 30 MILLIOHMS MAX.

MECHANICAL

RETENTION FORCE: 460 GRAMS MIN PER CONTACT.
INSERTION FORCE: 230 GRAMS MAX PER CONTACT PAIR.
WITHDRAWAL FORCE: 15 GRAMS MIN PER CONTACT PAIR.

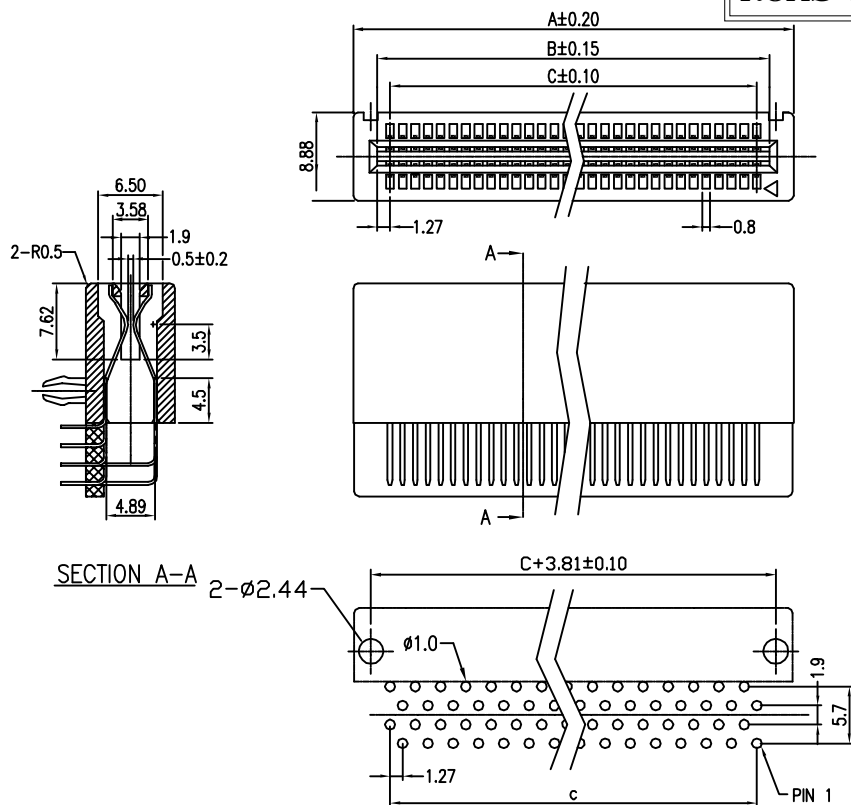
ENVIRONMENTAL

TEMPERATURE RANGE: -55°C TO +85°C.

Ordering Information

136 - $\frac{XXX}{a} \frac{X}{b} \frac{X}{c}$


- a. No. Of Pins
b. Contact Plating
0: Gold flash selective gold
1: 5u" selective gold on contact
2: 10u" selective gold on contact
3: 15u" selective gold on contact
4: 30u" selective gold on contact
5: 50u" selective gold on contact
6: Gold flash full gold
- c: Terminal Type
0: Row gap 1.90mm R/A with mounting ear
1: Row gap 1.90mm with mounting ear
2: Row gap 1.90mm SMT with mounting ear
3: Card edge(a type) w/o mounting ear
4: Card edge(b type) w/o mounting ear
5: Card edge dip post w/o mounting ear
6: Card edge r/a clip w/o mounting ear
7: Card edge r/a type w/o mounting ear
8: Card edge smt type w/o mounting ear
9: Card edge type w/o mounting ear



RECOMMENDED PCB LAYOUT (TOP VIEW)
1.27 PITCH CARD EDGE R/A CLIP W/O MOUNTING EAR

Circuit	Dimension			Circuit	Dimension		
	A	B	C		A	B	C
04	8.64	3.81	1.27	34	27.69	22.86	20.32
06	9.91	5.08	2.54	36	28.96	24.13	21.59
08	11.18	6.35	3.81	38	30.23	25.40	22.86
10	12.45	7.62	5.08	40	31.50	26.67	24.13
12	13.72	8.89	6.35	42	32.77	27.94	25.40
14	14.99	10.16	7.62	44	34.04	29.21	26.67
16	16.26	11.43	8.89	46	35.31	30.48	27.94
18	17.53	12.70	10.16	48	36.58	31.75	29.21
20	18.80	13.97	11.43	50	37.85	33.02	30.48
22	20.07	15.24	12.70	52	39.12	34.29	31.75
24	21.34	16.51	13.97	54	40.39	35.56	33.02
26	22.61	17.78	15.24	56	41.66	36.83	34.29
28	23.88	19.05	16.51	58	42.93	38.10	35.56
30	25.15	20.32	17.78	60	44.20	39.37	36.83
32	26.42	21.59	19.05	68	49.28	44.45	41.95

DO NOT SCALE DRAWING

DIMENSIONS: <input type="checkbox"/> MM [INCH] <input type="checkbox"/> INCH [mm] <input checked="" type="checkbox"/> MM ONLY	CAD GENERATED DRAWING, DO NOT MANUALLY UPDATE DRAWN BY AND DATE JUSTIN XING 07-03-06	 Y-S ELECTRONIC CO., LTD. No. 101, Sec. 1, Long-An Street, Lu-Chu, Taoyuan, Taiwan, R.O.C. TEL: +886-3-3609819 FAX: +886-3-3609817
	UNLESS OTHERWISE SPECIFIED, GENERAL TOLERANCE: DECIMALS X: ±0.38 [0.015] ANGLES X: ±3° .X ±0.25 [0.010] X: ±1.0° .XX ±0.13 [0.005]	
MATERIAL FINISH	SCALE: 2 : 1 SIZE: A3	DRAWING NO. 136-XXXX6 REV A
FILE NO.:		SHEET 7 OF 10

THE INFORMATION CONTAINED IN THIS DOCUMENT IS PROPRIETARY TO Y-S ELECTRONIC, ANY REPRODUCTION IN PART OR WHOLE WITHOUT PRIOR WRITTEN APPROVAL OR AUTHORIZATION OF Y-S ELECTRONIC IS STRICTLY PROHIBITED.

RoHS COMPLIANT

REVISIONS				
REV	ECN NO.	DESCRIPTION	APPROVED BY	DATE

Product Specification

MATERIAL

INSULATOR: GLASS-REINFORCED THERMOPLASTIC.
CONTACT: COPPER ALLOY.

ELECTRICAL

VOLTAGE RATING: 250 VAC RMS.
CURRENT RATING: 1 AMP.
DIELECTRIC WITHSTANDING VOLTAGE: 500 VAC RMS 60Hz

INSULATION RESISTANCE: 1000 MEGOHMS MIN AT 500 VDC.
CONTACT RESISTANCE: 30 MILLIOHMS MAX.

MECHANICAL

RETENTION FORCE: 460 GRAMS MIN PER CONTACT.
INSERTION FORCE: 230 GRAMS MAX PER CONTACT PAIR.
WITHDRAWAL FORCE: 15 GRAMS MIN PER CONTACT PAIR.

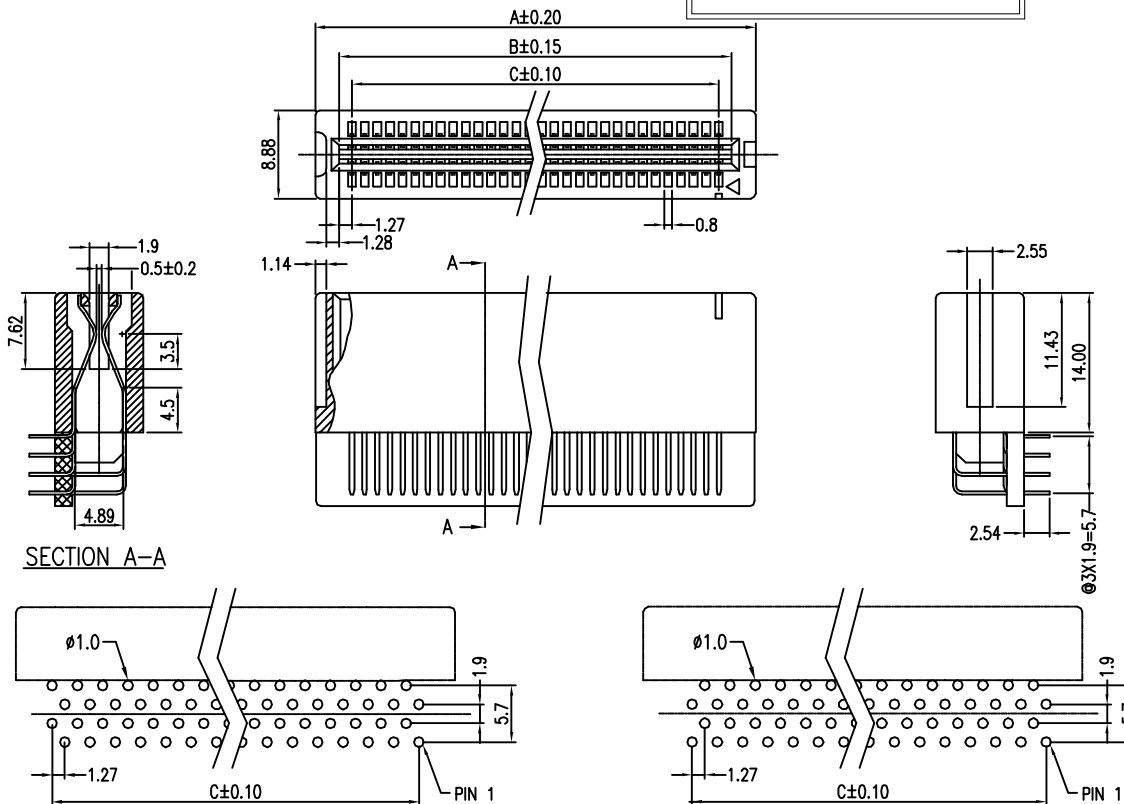
ENVIRONMENTAL

TEMPERATURE RANGE: -55°C TO +85°C.

Ordering Information

136 - $\frac{XXX}{a} \frac{X}{b} \frac{X}{c}$

- a. No. Of Pins
- b. Contact Plating
 - 0: Gold flash selective gold
 - 1: 5u" selective gold on contact
 - 2: 10u" selective gold on contact
 - 3: 15u" selective gold on contact
 - 4: 30u" selective gold on contact
 - 5: 50u" selective gold on contact
 - 6: Gold flash full gold
- c. Terminal Type
 - 0: Row gap 1.90mm R/A with mounting ear
 - 1: Row gap 1.90mm with mounting ear
 - 2: Row gap 1.90mm SMT with mounting ear
 - 3: Card edge(a type) w/o mounting ear
 - 4: Card edge(b type) w/o mounting ear
 - 5: Card edge dip post w/o mounting ear
 - 6: Card edge r/a clip w/o mounting ear
 - 7: Card edge r/a type w/o mounting ear
 - 8: Card edge smt type w/o mounting ear
 - 9: Card edge type w/o mounting ear



1.27 PITCH CARD EDGE R/A TYPE W/O MOUNTING EAR

Circuit	Dimension			Circuit	Dimension		
	A	B	C		A	B	C
04	8.64	3.81	1.27	36	28.96	24.13	21.59
06	9.91	5.08	2.54	38	30.23	25.40	22.86
08	11.18	6.35	3.81	40	31.50	26.67	24.13
10	12.45	7.62	5.08	42	32.77	27.94	25.40
12	13.72	8.89	6.35	44	34.04	29.21	26.67
14	14.99	10.16	7.62	46	35.31	30.48	27.94
16	16.26	11.43	8.89	48	36.58	31.75	29.21
18	17.53	12.70	10.16	50	37.85	33.02	30.48
20	18.80	13.97	11.43	52	39.12	34.29	31.75
22	20.07	15.24	12.70	54	40.39	35.56	33.02
24	21.34	16.51	13.97	56	41.66	36.83	34.29
26	22.61	17.78	15.24	58	42.93	38.10	35.56
28	23.88	19.05	16.51	60	44.20	39.37	36.83
30	25.15	20.32	17.78	80	56.90	52.07	49.53
32	26.42	21.59	19.05	100	69.60	64.77	62.23
34	27.69	22.86	20.32	120	82.30	77.47	74.93

DIMENSIONS: <input type="checkbox"/> MM [INCH] <input type="checkbox"/> INCH [mm] <input checked="" type="checkbox"/> MM ONLY	CAD GENERATED DRAWING, DO NOT MANUALLY UPDATE DRAWN BY AND DATE JUSTIN XING 07-03-06	Y-S ELECTRONIC CO., LTD. No. 101, Sec. 1, Long-An Street, Lu-Chu, Taoyuan, Taiwan, R.O.C. TEL: +886-3-3609819 FAX: +886-3-3609817
	UNLESS OTHERWISE SPECIFIED, GENERAL TOLERANCE: DECIMALS X: ±0.38 [0.015] ANGLES X: ±3° .X ±0.25 [0.010] X: ±1.0° .XX ±0.13 [0.005]	
MATERIAL FINISH	SCALE: 2 : 1 SIZE: A3	DRAWING NO. 136-XXXX7 REV A
FILE NO.:		SHEET 8 OF 10

DO NOT SCALE DRAWING

THE INFORMATION CONTAINED IN THIS DOCUMENT IS PROPRIETARY TO Y-S ELECTRONIC, ANY REPRODUCTION IN PART OR WHOLE WITHOUT PRIOR WRITTEN APPROVAL OR AUTHORIZATION OF Y-S ELECTRONIC IS STRICTLY PROHIBITED.

RoHS COMPLIANT

REVISIONS				
REV	ECN NO.	DESCRIPTION	APPROVED BY	DATE

Product Specification

MATERIAL

INSULATOR: GLASS-REINFORCED THERMOPLASTIC.
CONTACT: COPPER ALLOY.

ELECTRICAL

VOLTAGE RATING: 250 VAC RMS.
CURRENT RATING: 1 AMP.
DIELECTRIC WITHSTANDING VOLTAGE: 500 VAC RMS 60Hz

INSULATION RESISTANCE: 1000 MEGOHMS MIN AT 500 VDC.
CONTACT RESISTANCE: 30 MILLIOHMS MAX.

MECHANICAL

RETENTION FORCE: 460 GRAMS MIN PER CONTACT.
INSERTION FORCE: 230 GRAMS MAX PER CONTACT PAIR.
WITHDRAWAL FORCE: 15 GRAMS MIN PER CONTACT PAIR.

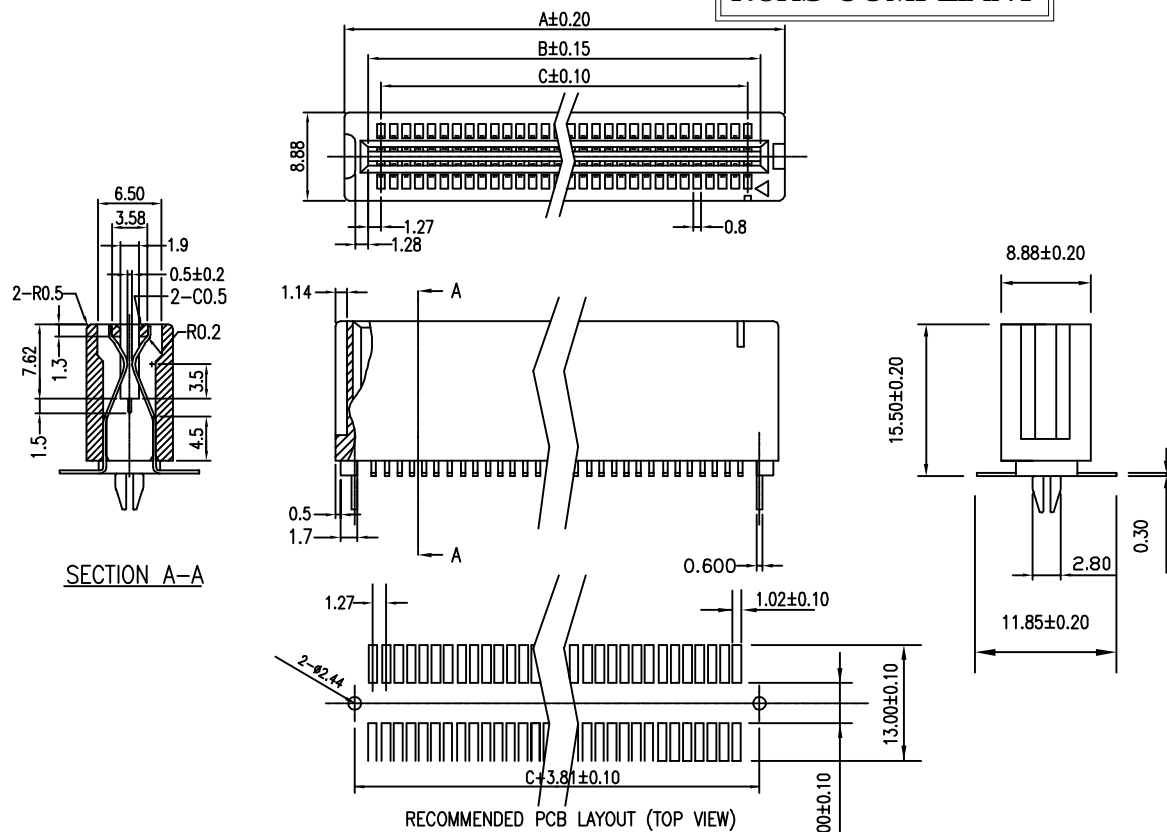
ENVIRONMENTAL

TEMPERATURE RANGE: -55°C TO +85°C.

Ordering Information

136 - $\frac{XXX}{a} \frac{X}{b} \frac{X}{c}$


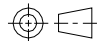
- a. No. Of Pins
b. Contact Plating
0: Gold flash selective gold
1: 5u" selective gold on contact
2: 10u" selective gold on contact
3: 15u" selective gold on contact
4: 30u" selective gold on contact
5: 50u" selective gold on contact
6: Gold flash full gold
c. Terminal Type
0: Row gap 1.90mm R/A with mounting ear
1: Row gap 1.90mm with mounting ear
2: Row gap 1.90mm SMT with mounting ear
3: Card edge(a type) w/o mounting ear
4: Card edge(b type) w/o mounting ear
5: Card edge dip post w/o mounting ear
6: Card edge r/a clip w/o mounting ear
7: Card edge r/a type w/o mounting ear
8: Card edge smt type w/o mounting ear
9: Card edge type w/o mounting ear



1.27 PITCH CARD EDGE SMT W/O MOUNTING EAR

Circuit	Dimension			Circuit	Dimension		
	A	B	C		A	B	C
04	8.64	3.81	1.27	36	28.96	24.13	21.59
06	9.91	5.08	2.54	38	30.23	25.40	22.86
08	11.18	6.35	3.81	40	31.50	26.67	24.13
10	12.45	7.62	5.08	42	32.77	27.94	25.40
12	13.72	8.89	6.35	44	34.04	29.21	26.67
14	14.99	10.16	7.62	46	35.31	30.48	27.94
16	16.26	11.43	8.89	48	36.58	31.75	29.21
18	17.53	12.70	10.16	50	37.85	33.02	30.48
20	18.80	13.97	11.43	52	39.12	34.29	31.75
22	20.07	15.24	12.70	54	40.39	35.56	33.02
24	21.34	16.51	13.97	56	41.66	36.83	34.29
26	22.61	17.78	15.24	58	42.93	38.10	35.56
28	23.88	19.05	16.51	60	44.20	39.37	36.83
30	25.15	20.32	17.78	80	56.90	52.07	49.53
32	26.42	21.59	19.05	100	69.60	64.77	62.23
34	27.69	22.86	20.32	120	82.30	77.47	74.93
36	28.96	24.13	21.59	182	121.67	116.84	114.30

DO NOT SCALE DRAWING

DIMENSIONS: <input type="checkbox"/> MM [INCH] <input type="checkbox"/> INCH [mm] <input checked="" type="checkbox"/> MM ONLY	CAD GENERATED DRAWING, DO NOT MANUALLY UPDATE DRAWN BY AND DATE JUSTIN XING 07-03-06	 Y-S ELECTRONIC CO., LTD. No. 101, Sec. 1, Long-An Street, Lu-Chu, Taoyuan, Taiwan, R.O.C. TEL: +886-3-3609819 FAX: +886-3-3609817
UNLESS OTHERWISE SPECIFIED, GENERAL TOLERANCE: DECIMALS X: ±0.38 [0.015] .X: ±0.25 [0.010] .XX: ±0.13 [0.005] ANGLES X°: ±3° .X°: ±1.0°	CHECKED BY AND DATE JUSTIN XING 07-03-06 APPROVED BY AND DATE MICHAEL HUANG 07-03-06 THIRD ANGLE PROJECTION 	
MATERIAL	SCALE: 2:1	SIZE: A3
FINISH	FILE NO.:	SHEET 9 OF 10

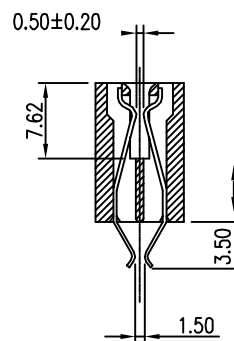
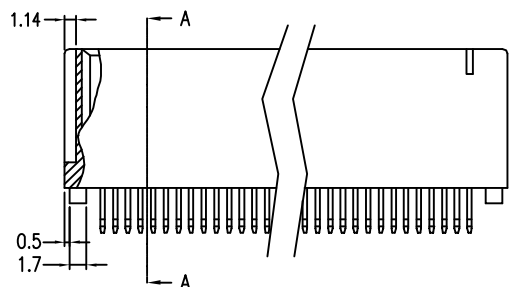
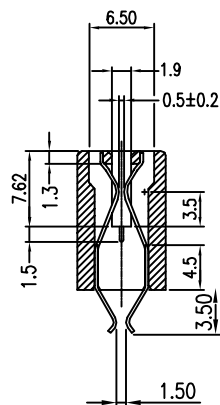
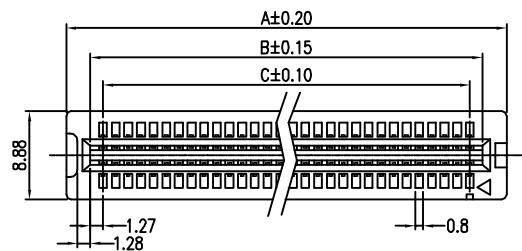
TITLE
136 SERIES
EDGE CARD CONNECTOR 1.27MM
(0.050")

DRAWING NO. 136-XXXX8 REV A

THE INFORMATION CONTAINED IN THIS DOCUMENT IS PROPRIETARY TO Y-S ELECTRONIC, ANY REPRODUCTION IN PART OR WHOLE WITHOUT PRIOR WRITTEN APPROVAL OR AUTHORIZATION OF Y-S ELECTRONIC IS STRICTLY PROHIBITED.

RoHS COMPLIANT

REVISIONS				
REV	ECN NO.	DESCRIPTION	APPROVED BY	DATE



SECTION A-A

1.27 PITCH CARD EDGE TYPE W/O MOUNTING EAR

Product Specification

MATERIAL

INSULATOR: GLASS-REINFORCED THERMOPLASTIC.
CONTACT: COPPER ALLOY.

ELECTRICAL

VOLTAGE RATING: 250 VAC RMS.
CURRENT RATING: 1 AMP.
DIELECTRIC WITHSTANDING VOLTAGE: 500 VAC RMS 60Hz

INSULATION RESISTANCE: 1000 MEGOHMS MIN AT 500 VDC.
CONTACT RESISTANCE: 30 MILLIOHMS MAX.

MECHANICAL

RETENTION FORCE: 460 GRAMS MIN PER CONTACT.
INSERTION FORCE: 230 GRAMS MAX PER CONTACT PAIR.
WITHDRAWAL FORCE: 15 GRAMS MIN PER CONTACT PAIR.

ENVIRONMENTAL


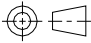
TEMPERATURE RANGE: -55°C TO +85°C.

Ordering Information

136 - $\frac{XXX}{a} \frac{X}{b} \frac{X}{c}$

- a. No. Of Pins
- b. Contact Plating
 - 0: Gold flash selective gold
 - 1: 5u' selective gold on contact
 - 2: 10u' selective gold on contact
 - 3: 15u' selective gold on contact
 - 4: 30u' selective gold on contact
 - 5: 50u' selective gold on contact
 - 6: Gold flash full gold
- c: Terminal Type
 - 0: Row gap 1.90mm R/A with mounting ear
 - 1: Row gap 1.90mm with mounting ear
 - 2: Row gap 1.90mm SMT with mounting ear
 - 3: Card edge(a type) w/o mounting ear
 - 4: Card edge(b type) w/o mounting ear
 - 5: Card edge dip post w/o mounting ear
 - 6: Card edge r/a clip w/o mounting ear
 - 7: Card edge r/a type w/o mounting ear
 - 8: Card edge smt type w/o mounting ear
 - 9: Card edge type w/o mounting ear

Circuit	Dimension			Circuit	Dimension		
	A	B	C		A	B	C
04	8.64	3.81	1.27	36	28.96	24.13	21.59
06	9.91	5.08	2.54	38	30.23	25.40	22.86
08	11.18	6.35	3.81	40	31.50	26.67	24.13
10	12.45	7.62	5.08	42	32.77	27.94	25.40
12	13.72	8.89	6.35	44	34.04	29.21	26.67
14	14.99	10.16	7.62	46	35.31	30.48	27.94
16	16.26	11.43	8.89	48	36.58	31.75	29.21
18	17.53	12.70	10.16	50	37.85	33.02	30.48
20	18.80	13.97	11.43	52	39.12	34.29	31.75
22	20.07	15.24	12.70	54	40.39	35.56	33.02
24	21.34	16.51	13.97	56	41.66	36.83	34.29
26	22.61	17.78	15.24	58	42.93	38.10	35.56
28	23.88	19.05	16.51	60	44.20	39.37	36.83
30	25.15	20.32	17.78	80	56.90	52.07	49.53
32	26.42	21.59	19.05	100	69.60	64.77	62.23
34	27.69	22.86	20.32	124	84.84	80.01	77.47
36	28.96	24.13	21.59	182	121.67	116.84	114.30

DIMENSIONS: <input type="checkbox"/> MM [INCH] <input type="checkbox"/> INCH [mm] <input checked="" type="checkbox"/> MM ONLY	CAD GENERATED DRAWING, DO NOT MANUALLY UPDATE DRAWN BY AND DATE JUSTIN XING 07-03-06	 Y-S ELECTRONIC CO., LTD. No. 101, Sec. 1, Long-An Street, Lu-Chu, Taoyuan, Taiwan, R.O.C. TEL: +886-3-3609819 FAX: +886-3-3609817
	UNLESS OTHERWISE SPECIFIED, GENERAL TOLERANCE: DECIMALS X: ±0.38 [0.015] ANGLES X: ±0.25 [0.010] X: ±3° .XX ±0.13 [0.005] X: ±10°	
MATERIAL FINISH	 SCALE: 2 : 1 SIZE: A3	DRAWING NO. 136-XXXX9 REV A
FILE NO.:		SHEET 10 OF 10

DO NOT SCALE DRAWING