

THE INFORMATION CONTAINED IN THIS DOCUMENT IS PROPRIETARY TO Y-S ELECTRONIC, ANY REPRODUCTION IN PART OR WHOLE WITHOUT PRIOR WRITTEN APPROVAL OR AUTHORIZATION OF Y-S ELECTRONIC IS STRICTLY PROHIBITED.

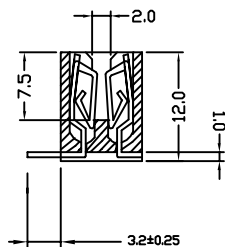
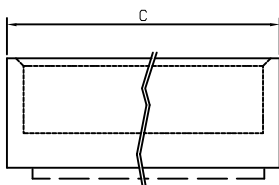
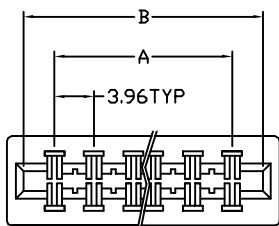
RoHS COMPLIANT

REVISIONS				
REV	ECN NO.	DESCRIPTION	APPROVED BY	DATE

MATERIAL  
 INSULATOR: PBT +30% GLASS FIBER (UL94V-0).  
 CONTACT: PHOSPHOR BRONZE OR BRASS.

SPECIFICATION  
 CURRENT RATING: 3 AMP.  
 INSULATION RESISTANCE: 5000 MEGOHMS MIN AT 500 VDC.  
 CONTACT RESISTANCE: 20 MILLIOHMS MAX.  
 VOLTAGE : 500V FOR ONE MINUTE.

ENVIRONMENTAL  
 TEMPERATURE RANGE: -40°C TO +105°C.



DIP TYPE

3.96 PITCH CARD EDGE WITH OUT MOUNTING EAR  
 R/A SINGLE ROW ON PCB

Ordering Information

135 -  $\frac{XX}{a} \frac{X}{b} \frac{X}{c}$

- a. No. Of Pins
- b. Contact Plating
  - 0: Gold Flash selective gold(standard)
  - 1: 15u" selective gold on contact
  - 2: 30u" selective gold on contact
  - 3: Gold Flash Full gold
- c. Terminal Type
  - 0: Without mounting ear r/a single row on PCB
  - 1: Card edge dip type single row on PCB
  - 2: With mounting ear solder type
  - 3: With mounting ear dip type(5.08mm)
  - 4: Without mounting ear solder type
  - 5: Without mounting ear dip type
  - 6: With mounting ear two rows r/a
  - 7: With mounting ear dip type(3.96mm)(standard)

Dimensions

Circuit	Dimension			Circuit	Dimension		
	A	B	C		A	B	C
10	15.84	24.06	27.40	40	75.24	83.46	86.80
12	19.80	28.02	31.36	44	83.16	91.38	94.72
18	31.68	39.90	43.24	46	87.12	95.34	98.68
20	35.64	43.86	47.20	50	95.04	103.26	106.60
24	43.56	51.78	55.12	56	106.92	115.14	118.48
26	47.52	55.74	59.08	60	114.84	123.06	126.40
28	51.48	59.70	63.04	62	118.80	127.02	130.36
30	55.44	63.66	67.00	64	122.76	130.98	134.32
32	59.40	67.62	70.96	70	134.64	142.86	146.20
36	67.32	75.54	78.88	72	138.60	146.82	150.16

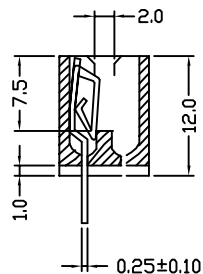
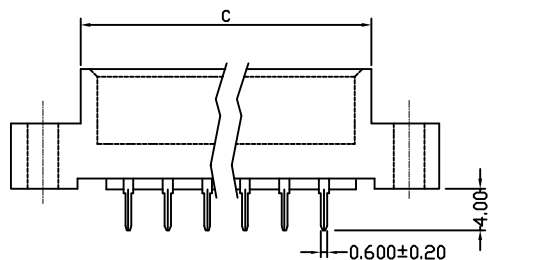
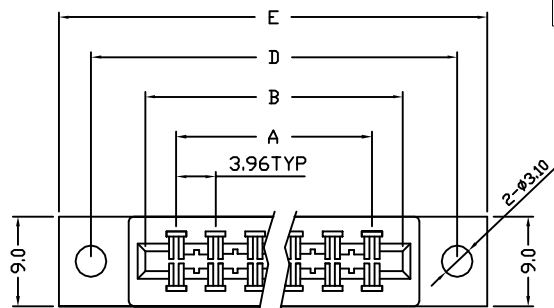
DO NOT SCALE DRAWING

DIMENSIONS: <input type="checkbox"/> MM [INCH] <input type="checkbox"/> INCH [mm] <input checked="" type="checkbox"/> MM ONLY	CAD GENERATED DRAWING, DO NOT MANUALLY UPDATE	<b>Y-S ELECTRONIC CO., LTD.</b> No. 101, Sec. 1, Long-An Street, Lu-Chu, Taoyuan, Taiwan, R.O.C. TEL: +886-3-3609819 FAX: +886-3-3609817
	UNLESS OTHERWISE SPECIFIED, GENERAL TOLERANCE: DECIMALS      ANGLES X: ±0.38 [0.015]    X° ±3° .X ±0.25 [0.010]    .X° ±1.0° .XX ±0.13 [0.005]	
MATERIAL FINISH	CHECKED BY AND DATE JUSTIN XING 07-03-06  APPROVED BY AND DATE MICHAEL HAUNG 07-03-06 THIRD ANGLE PROJECTION 	DRAWING NO. 135-XXXX      REV A
SCALE: 2 : 1      SIZE: A3	FILE NO.: SHEET 1 OF 6	

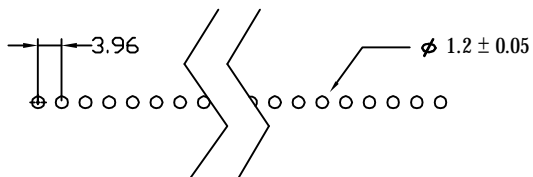
THE INFORMATION CONTAINED IN THIS DOCUMENT IS PROPRIETARY TO Y-S ELECTRONIC, ANY REPRODUCTION IN PART OR WHOLE WITHOUT PRIOR WRITTEN APPROVAL OR AUTHORIZATION OF Y-S ELECTRONIC IS STRICTLY PROHIBITED.

RoHS COMPLIANT

REVISIONS				
REV	ECN NO.	DESCRIPTION	APPROVED BY	DATE



3.96 PITCH CARD EDGE DIP TYPE SINGLE ROW ON PCB



RECOMMENDED PCB LAYOUT (TOP VIEW)

MATERIAL

INSULATOR: PBT +30% GLASS FIBER (UL94V-0).  
CONTACT: PHOSPHOR BRONZE OR BRASS.

SPECIFICATION

CURRENT RATING: 3 AMP.  
INSULATION RESISTANCE: 5000 MEGOHMS MIN AT 500 VDC.  
CONTACT RESISTANCE: 20 MILLIOHMS MAX.  
VOLTAGE : 500V FOR ONE MINUTE.

ENVIRONMENTAL

TEMPERATURE RANGE: -40°C TO +105°C.

Ordering Information

135 -  $\frac{XX}{a} \frac{X}{b} \frac{X}{c}$

- a. No. Of Pins
- b. Contact Plating
  - 0: Gold Flash selective gold(standard)
  - 1: 15u" selective gold on contact
  - 2: 30u" selective gold on contact
  - 3: Gold Flash Full gold
- c. Terminal Type
  - 0: Without mounting ear r/a single row on PCB
  - 1: Card edge dip type single row on PCB
  - 2: With mounting ear solder type
  - 3: With mounting ear dip type(5.08mm)
  - 4: Without mounting ear solder type
  - 5: Without mounting ear dip type
  - 6: With mounting ear two rows r/a
  - 7: With mounting ear dip type(3.96mm)(standard)

Dimensions

Circuit	Dimension					Circuit	Dimension				
	A	B	C	D	E		A	B	C	D	E
10	15.84	24.06	27.40	34.94	41.24	40	75.24	83.46	86.80	94.34	100.64
12	19.80	28.02	31.36	38.90	45.20	44	83.16	91.38	94.72	102.26	108.56
16	27.72	35.94	39.28	46.82	53.12	46	87.12	95.34	98.68	106.22	112.52
20	35.64	43.86	47.20	54.74	61.04	50	95.04	103.26	106.60	114.14	120.44
24	43.56	51.78	55.12	62.66	68.96	56	106.92	115.14	118.48	126.02	132.32
26	47.52	55.74	59.08	66.62	72.92	60	114.84	123.06	126.40	133.94	140.24
28	51.48	59.70	63.04	70.58	76.88	62	118.80	127.02	130.36	137.90	144.20
30	55.44	63.66	67.00	74.54	80.84	64	122.76	130.98	134.32	141.86	148.16
32	59.40	67.62	70.96	78.50	84.80	70	134.64	142.86	146.20	153.74	160.04
36	67.32	75.54	78.88	86.42	92.72	72	138.60	146.82	150.16	157.70	164.00

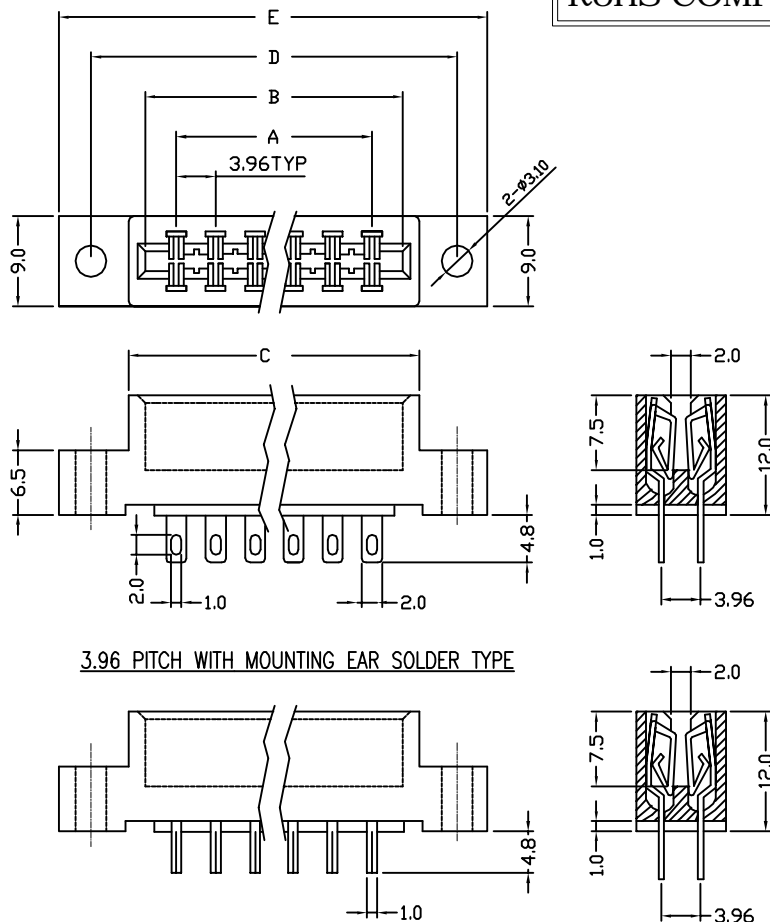
DO NOT SCALE DRAWING

DIMENSIONS: <input type="checkbox"/> MM [INCH] <input type="checkbox"/> INCH [mm] <input checked="" type="checkbox"/> MM ONLY	CAD GENERATED DRAWING, DO NOT MANUALLY UPDATE	<b>Y-S ELECTRONIC CO., LTD.</b> No. 101, Sec. 1, Long-An Street, Lu-Chu, Taoyuan, Taiwan, R.O.C. TEL: +886-3-3609819 FAX: +886-3-3609817	
	UNLESS OTHERWISE SPECIFIED, GENERAL TOLERANCE: DECIMALS      ANGLES X: ±0.38 [0.015]    X° ±3° .X ±0.25 [0.010]    .X° ±1.0° .XX ±0.13 [0.005]		DRAWN BY AND DATE JUSTIN XING 07-03-06
MATERIAL FINISH	CHECKED BY AND DATE JUSTIN XING 07-03-06  APPROVED BY AND DATE MICHAEL HAUNG 07-03-06 THIRD ANGLE PROJECTION 	DRAWING NO. 135-XXX1	REV A
SCALE: 2 : 1	SIZE: A3	FILE NO.:	SHEET 2 OF 6

THE INFORMATION CONTAINED IN THIS DOCUMENT IS PROPRIETARY TO Y-S ELECTRONIC, ANY REPRODUCTION IN PART OR WHOLE WITHOUT PRIOR WRITTEN APPROVAL OR AUTHORIZATION OF Y-S ELECTRONIC IS STRICTLY PROHIBITED.

RoHS COMPLIANT

REVISIONS				
REV	ECN NO.	DESCRIPTION	APPROVED BY	DATE



3.96 PITCH WITH MOUNTING EAR SOLDER TYPE

Dimensions 3.96 PITCH WITH MOUNTING EAR DIP TYPE(Standard)

Circuit	Dimension					Circuit	Dimension				
	A	B	C	D	E		A	B	C	D	E
10	15.84	24.06	27.40	34.94	41.24	44	83.16	91.38	94.72	102.26	108.56
12	19.80	28.02	31.36	38.90	45.20	46	87.12	95.34	98.68	106.22	112.52
16	27.72	35.94	39.28	46.82	53.12	50	95.04	103.26	106.60	114.14	120.44
20	35.64	43.86	47.20	54.74	61.04	56	106.92	115.14	118.48	126.02	132.32
24	43.56	51.78	55.12	62.66	68.96	60	114.84	123.06	126.40	133.94	140.24
26	47.52	55.74	59.08	66.62	72.92	62	118.80	127.02	130.36	137.90	144.20
28	51.48	59.70	63.04	70.58	76.88	64	122.76	130.98	134.32	141.86	148.16
30	55.44	63.66	67.00	74.54	80.84	70	134.64	142.86	146.20	153.74	160.04
32	59.40	67.62	70.96	78.50	84.80	72	138.60	146.82	150.16	157.70	164.00
36	67.32	75.54	78.88	86.42	92.72	86	166.32	174.54	177.88	185.49	191.48
40	75.24	83.46	86.80	94.34	100.64						

MATERIAL  
 INSULATOR: PBT +30% GLASS FIBER (UL94V-0).  
 CONTACT: PHOSPHOR BRONZE OR BRASS.

SPECIFICATION  
 CURRENT RATING: 3 AMP.  
 INSULATION RESISTANCE: 5000 MEGOHMS MIN AT 500 VDC.  
 CONTACT RESISTANCE: 20 MILLIOHMS MAX.  
 VOLTAGE : 500V FOR ONE MINUTE.

ENVIRONMENTAL  
 TEMPERATURE RANGE: -40°C TO +105°C.

Ordering Information

$$135 - \frac{XX}{a} \frac{X}{b} \frac{X}{c}$$

- a. No. Of Pins
- b. Contact Plating
  - 0: Gold Flash selective gold(standard)
  - 1: 15u" selective gold on contact
  - 2: 30u" selective gold on contact
  - 3: Gold Flash Full gold
- c. Terminal Type
  - 0: Without mounting ear r/a single row on PCB
  - 1: Card edge dip type single row on PCB
  - 2: With mounting ear solder type
  - 3: With mounting ear dip type(5.08mm)
  - 4: Without mounting ear solder type
  - 5: Without mounting ear dip type
  - 6: With mounting ear two rows r/a
  - 7: With mounting ear dip type(3.96mm)(standard)

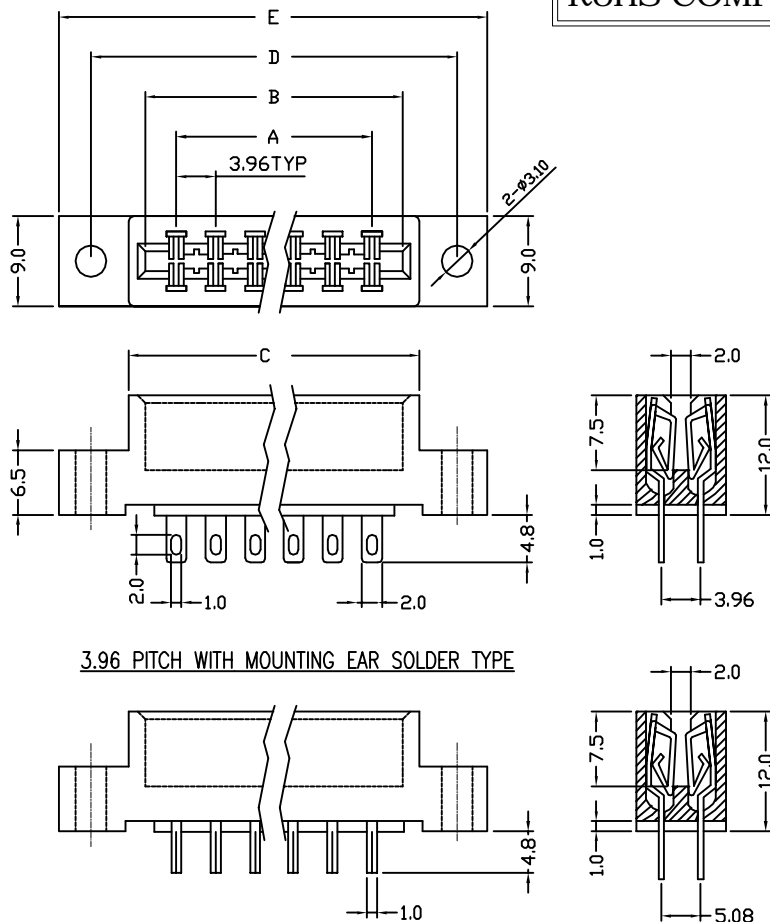
DO NOT SCALE DRAWING

DIMENSIONS: <input type="checkbox"/> MM [INCH] <input type="checkbox"/> INCH [mm] <input checked="" type="checkbox"/> MM ONLY	CAD GENERATED DRAWING, DO NOT MANUALLY UPDATE	<b>Y-S ELECTRONIC CO., LTD.</b> No. 101, Sec. 1, Long-An Street, Lu-Chu, Taoyuan, Taiwan, R.O.C. TEL: +886-3-3609819 FAX: +886-3-3609817	
	UNLESS OTHERWISE SPECIFIED, GENERAL TOLERANCE: DECIMALS      ANGLES X: ±0.38 [0.015]    X*: ±3° .X ±0.25 [0.010]    .X*: ±1.0° .XX ±0.13 [0.005]		DRAWN BY AND DATE JUSTIN XING 07-03-06
MATERIAL FINISH	CHECKED BY AND DATE JUSTIN XING 07-03-06  APPROVED BY AND DATE MICHAEL HAUNG 07-03-06 THIRD ANGLE PROJECTION 	DRAWING NO. 135-XXX2(7)	REV A
SCALE: 2 : 1	SIZE: A3	FILE NO.:	SHEET 3 OF 6

THE INFORMATION CONTAINED IN THIS DOCUMENT IS PROPRIETARY TO Y-S ELECTRONIC, ANY REPRODUCTION IN PART OR WHOLE WITHOUT PRIOR WRITTEN APPROVAL OR AUTHORIZATION OF Y-S ELECTRONIC IS STRICTLY PROHIBITED.

RoHS COMPLIANT

REVISIONS				
REV	ECN NO.	DESCRIPTION	APPROVED BY	DATE



**MATERIAL**  
 INSULATOR: PBT +30% GLASS FIBER (UL94V-0).  
 CONTACT: PHOSPHOR BRONZE OR BRASS.

**SPECIFICATION**  
 CURRENT RATING: 3 AMP.  
 INSULATION RESISTANCE: 5000 MEGOHMS MIN AT 500 VDC.  
 CONTACT RESISTANCE: 20 MILLIOHMS MAX.  
 VOLTAGE : 500V FOR ONE MINUTE.

**ENVIRONMENTAL**  
 TEMPERATURE RANGE: -40°C TO +105°C.

Ordering Information

$$135 - \frac{XX}{a} \frac{X}{b} \frac{X}{c}$$

- a. No. Of Pins
- b. Contact Plating
  - 0: Gold Flash selective gold(standard)
  - 1: 15u" selective gold on contact
  - 2: 30u" selective gold on contact
  - 3: Gold Flash Full gold
- c. Terminal Type
  - 0: Without mounting ear r/a single row on PCB
  - 1: Card edge dip type single row on PCB
  - 2: With mounting ear solder type
  - 3: With mounting ear dip type(5.08mm)
  - 4: Without mounting ear solder type
  - 5: Without mounting ear dip type
  - 6: With mounting ear two rows r/a
  - 7: With mounting ear dip type(3.96mm)(standard)

Dimensions 3.96 PITCH WITH MOUNTING EAR DIP TYPE

Circuit	Dimension					Circuit	Dimension				
	A	B	C	D	E		A	B	C	D	E
10	15.84	24.06	27.40	34.94	41.24	44	83.16	91.38	94.72	102.26	108.56
12	19.80	28.02	31.36	38.90	45.20	46	87.12	95.34	98.68	106.22	112.52
16	27.72	35.94	39.28	46.82	53.12	50	95.04	103.26	106.60	114.14	120.44
20	35.64	43.86	47.20	54.74	61.04	56	106.92	115.14	118.48	126.02	132.32
24	43.56	51.78	55.12	62.66	68.96	60	114.84	123.06	126.40	133.94	140.24
26	47.52	55.74	59.08	66.62	72.92	62	118.80	127.02	130.36	137.90	144.20
28	51.48	59.70	63.04	70.58	76.88	64	122.76	130.98	134.32	141.86	148.16
30	55.44	63.66	67.00	74.54	80.84	70	134.64	142.86	146.20	153.74	160.04
32	59.40	67.62	70.96	78.50	84.80	72	138.60	146.82	150.16	157.70	164.00
36	67.32	75.54	78.88	86.42	92.72	86	166.32	174.54	177.88	185.49	191.48
40	75.24	83.46	86.80	94.34	100.64						

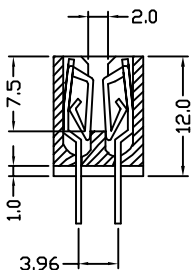
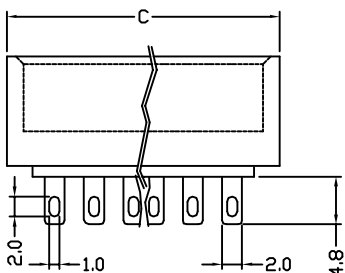
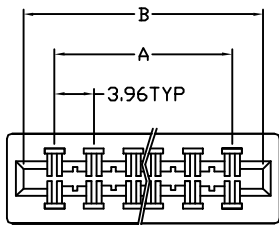
DO NOT SCALE DRAWING

DIMENSIONS: <input type="checkbox"/> MM [INCH] <input type="checkbox"/> INCH [mm] <input checked="" type="checkbox"/> MM ONLY	CAD GENERATED DRAWING, DO NOT MANUALLY UPDATE	<b>Y-S ELECTRONIC CO., LTD.</b> No. 101, Sec. 1, Long-An Street, Lu-Chu, Taoyuan, Taiwan, R.O.C. TEL: +886-3-3609819 FAX: +886-3-3609817	
	UNLESS OTHERWISE SPECIFIED, GENERAL TOLERANCE: DECIMALS: X: ±0.38 [0.015] .X: ±0.25 [0.010] .XX: ±0.13 [0.005] ANGLES: X°: ±3° .X°: ±1.0°		DRAWN BY AND DATE JUSTIN XING 07-03-06
MATERIAL FINISH	CHECKED BY AND DATE JUSTIN XING 07-03-06  APPROVED BY AND DATE MICHAEL HAUNG 07-03-06 THIRD ANGLE PROJECTION 	DRAWING NO. 135-XXX2(3)	REV A
SCALE: 2 : 1	SIZE: A3	FILE NO.:	SHEET 4 OF 6

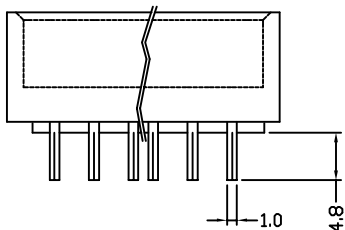
THE INFORMATION CONTAINED IN THIS DOCUMENT IS PROPRIETARY TO Y-S ELECTRONIC, ANY REPRODUCTION IN PART OR WHOLE WITHOUT PRIOR WRITTEN APPROVAL OR AUTHORIZATION OF Y-S ELECTRONIC IS STRICTLY PROHIBITED.

RoHS COMPLIANT

REVISIONS				
REV	ECN NO.	DESCRIPTION	APPROVED BY	DATE



3.96 PITCH WITHOUT MOUNTING EAR SOLDER TYPE



3.96 PITCH WITHOUT MOUNTING EAR DIP TYPE

Dimensions

Circuit	Dimension					Circuit	Dimension				
	A	B	C	D	E		A	B	C	D	E
10	15.84	24.06	27.40	34.94	41.24	40	75.24	83.46	86.80	94.34	100.64
12	19.80	28.02	31.36	38.90	45.20	44	83.16	91.38	94.72	102.26	108.56
16	27.72	35.94	39.28	46.82	53.12	46	87.12	95.34	98.68	106.22	112.52
20	35.64	43.86	47.20	54.74	61.04	50	95.04	103.26	106.60	114.14	120.44
24	43.56	51.78	55.12	62.66	68.96	56	106.92	115.14	118.48	126.02	132.32
26	47.52	55.74	59.08	66.62	72.92	60	114.84	123.06	126.40	133.94	140.24
28	51.48	59.70	63.04	70.58	76.88	62	118.80	127.02	130.36	137.90	144.20
30	55.44	63.66	67.00	74.54	80.84	64	122.76	130.98	134.32	141.86	148.16
32	59.40	67.62	70.96	78.50	84.80	70	134.64	142.86	146.20	153.74	160.04
36	67.32	75.54	78.88	86.42	92.72	72	138.60	146.82	150.16	157.70	164.00

MATERIAL  
INSULATOR: PBT +30% GLASS FIBER (UL94V-0).  
CONTACT: PHOSPHOR BRONZE OR BRASS.

SPECIFICATION  
CURRENT RATING: 3 AMP.  
INSULATION RESISTANCE: 5000 MEGOHMS MIN AT 500 VDC.  
CONTACT RESISTANCE: 20 MILLIOHMS MAX.  
VOLTAGE : 500V FOR ONE MINUTE.

ENVIRONMENTAL  
TEMPERATURE RANGE: -40°C TO +105°C.

Ordering Information

$$135 - \frac{XX}{a} \frac{X}{b} \frac{X}{c}$$

- a. No. Of Pins
- b. Contact Plating
  - 0: Gold Flash selective gold(standard)
  - 1: 15u" selective gold on contact
  - 2: 30u" selective gold on contact
  - 3: Gold Flash Full gold
- c. Terminal Type
  - 0: Without mounting ear r/a single row on PCB
  - 1: Card edge dip type single row on PCB
  - 2: With mounting ear solder type
  - 3: With mounting ear dip type(5.08mm)
  - 4: Without mounting ear solder type
  - 5: Without mounting ear dip type
  - 6: With mounting ear two rows r/a
  - 7: With mounting ear dip type(3.96mm)(standard)

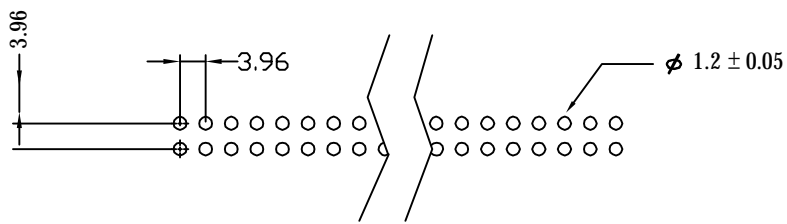
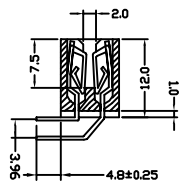
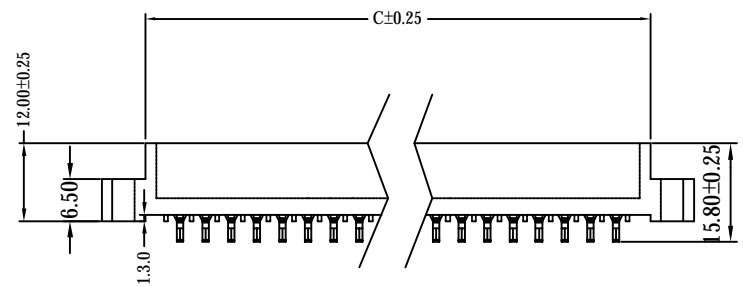
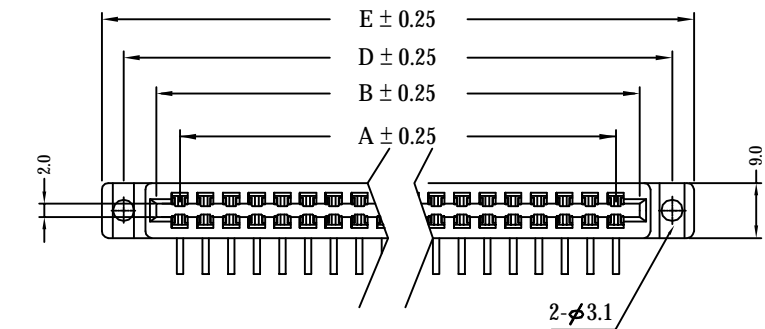
DO NOT SCALE DRAWING

DIMENSIONS: <input type="checkbox"/> MM [INCH] <input type="checkbox"/> INCH [mm] <input checked="" type="checkbox"/> MM ONLY	CAD GENERATED DRAWING, DO NOT MANUALLY UPDATE	<b>Y-S ELECTRONIC CO., LTD.</b> No. 101, Sec. 1, Long-An Street, Lu-Chu, Taoyuan, Taiwan, R.O.C. TEL: +886-3-3609819 FAX: +886-3-3609817	
	UNLESS OTHERWISE SPECIFIED, GENERAL TOLERANCE: DECIMALS      ANGLES X: ±0.38 [0.015]    X° ±3° .X ±0.25 [0.010]    .X° ±1.0° .XX ±0.13 [0.005]		DRAWN BY AND DATE JUSTIN XING 07-03-06
MATERIAL FINISH	CHECKED BY AND DATE JUSTIN XING 07-03-06  APPROVED BY AND DATE MICHAEL HAUNG 07-03-06 THIRD ANGLE PROJECTION 	DRAWING NO. 135-XXX4(5)	REV A
SCALE: 2 : 1	SIZE: A3	FILE NO.:	SHEET 5 OF 6

THE INFORMATION CONTAINED IN THIS DOCUMENT IS PROPRIETARY TO Y-S ELECTRONIC. ANY REPRODUCTION IN PART OR WHOLE WITHOUT PRIOR WRITTEN APPROVAL OR AUTHORIZATION OF Y-S ELECTRONIC IS STRICTLY PROHIBITED.

RoHS COMPLIANT

REVISIONS				
REV	ECN NO.	DESCRIPTION	APPROVED BY	DATE



MATERIAL  
 INSULATOR: PBT +30% GLASS FIBER (UL94V-0).  
 CONTACT: PHOSPHOR BRONZE OR BRASS.

SPECIFICATION  
 CURRENT RATING: 3 AMP.  
 INSULATION RESISTANCE: 5000 MEGOHMS MIN AT 500 VDC.  
 CONTACT RESISTANCE: 20 MILLIOHMS MAX.  
 VOLTAGE : 500V FOR ONE MINUTE.

ENVIRONMENTAL  
 TEMPERATURE RANGE: -40°C TO +105°C.

Ordering Information


135 -  $\frac{XX}{a} \frac{X}{b} \frac{X}{c}$

- a. No. Of Pins
- b. Contact Plating
  - 0: Gold Flash selective gold(standard)
  - 1: 15u" selective gold on contact
  - 2: 30u" selective gold on contact
  - 3: Gold Flash Full gold
- c. Terminal Type
  - 0: Without mounting ear r/a single row on PCB
  - 1: Card edge dip type single row on PCB
  - 2: With mounting ear solder type
  - 3: With mounting ear dip type(5.08mm)
  - 4: Without mounting ear solder type
  - 5: Without mounting ear dip type
  - 6: With mounting ear two rows r/a
  - 7: With mounting ear dip type(3.96mm)(standard)

Dimensions 3.96 PITCH WITH MOUNTING EAR TWO ROWS RIGHT ANGLE

Circuit	Dimension					Circuit	Dimension				
	A	B	C	D	E		A	B	C	D	E
10	15.84	24.06	27.40	34.94	41.24	44	83.16	91.38	94.72	102.26	108.56
12	19.80	28.02	31.36	38.90	45.20	46	87.12	95.34	98.68	106.22	112.52
16	27.72	35.94	39.28	46.82	53.12	50	95.04	103.26	106.60	114.14	120.44
20	35.64	43.86	47.20	54.74	61.04	56	106.92	115.14	118.48	126.02	132.32
24	43.56	51.78	55.12	62.66	68.96	60	114.84	123.06	126.40	133.94	140.24
26	47.52	55.74	59.08	66.62	72.92	62	118.80	127.02	130.36	137.90	144.20
28	51.48	59.70	63.04	70.58	76.88	64	122.76	130.98	134.32	141.86	148.16
30	55.44	63.66	67.00	74.54	80.84	70	134.64	142.86	146.20	153.74	160.04
32	59.40	67.62	70.96	78.50	84.80	72	138.60	146.82	150.16	157.70	164.00
36	67.32	75.54	78.88	86.42	92.72	86	166.32	174.54	177.88	185.49	191.48
40	75.24	83.46	86.80	94.34	100.64						

DO NOT SCALE DRAWING

DIMENSIONS: <input type="checkbox"/> MM [INCH] <input type="checkbox"/> INCH [mm] <input checked="" type="checkbox"/> MM ONLY	CAD GENERATED DRAWING, DO NOT MANUALLY UPDATE	 <b>Y-S ELECTRONIC CO., LTD.</b> No. 101, Sec. 1, Long-An Street, Lu-Chu, Taoyuan, Taiwan, R.O.C. TEL: +886-3-3609819 FAX: +886-3-3609817
	UNLESS OTHERWISE SPECIFIED, GENERAL TOLERANCE: DECIMALS X: ±0.38 [0.015] ANGLES X*: ±3° .X ±0.25 [0.010] .X* ±1.0° .XX ±0.13 [0.005]	
MATERIAL FINISH	CHECKED BY AND DATE JUSTIN XING 07-03-06 APPROVED BY AND DATE MICHAEL HAUNG 07-03-06 THIRD ANGLE PROJECTION	DRAWING NO. 135-XXX6
	SCALE: 2 : 1	SIZE: A3
		FILE NO.: SHEET 6 OF 6