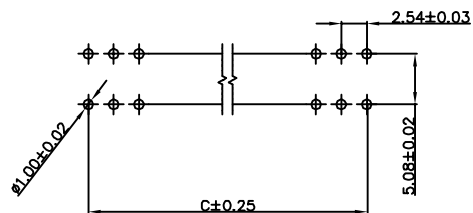
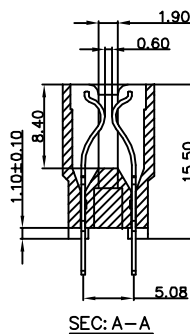
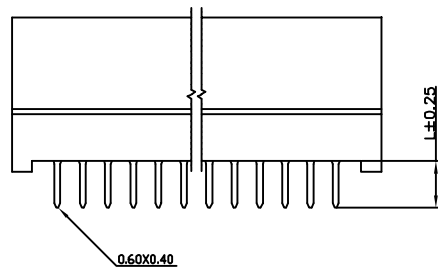
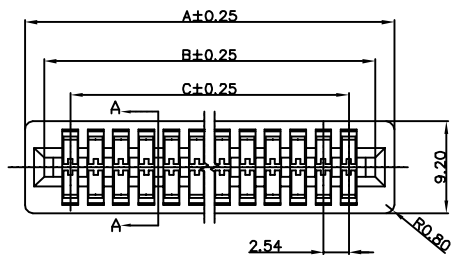


THE INFORMATION CONTAINED IN THIS DOCUMENT IS PROPRIETARY TO Y-S ELECTRONIC. ANY REPRODUCTION IN PART OR WHOLE WITHOUT PRIOR WRITTEN APPROVAL OR AUTHORIZATION OF Y-S ELECTRONIC IS STRICTLY PROHIBITED.

RoHS COMPLIANT

REVISIONS				
REV	ECN NO.	DESCRIPTION	APPROVED BY	DATE



TAIL LENGTH	L
A	4.70mm
C	6.10mm
F	14.10mm
H	21.80mm

Product Specification

INSULATOR
Glass-Filled P.B.T. is 94V-0 rated
CONTACT: Phosphor Bronze or Brass

SPECIFICATION:

Current Rating : 3 amperes
Contact Resistance : 20 miniohms max.
Operation Temperature : -55°C to +105°C
Voltage Rating : 800 VAC 1 minute
Insulation Resistance : 5000 megaohms min.
Insertion Force : 412 grams max. per pair
Withdrawal Force : 32 grams min. per pair

Ordering Information

134 - $\frac{XX}{a} \frac{X}{b} \frac{XXX}{c} \frac{X}{d} \frac{X}{e} \frac{X}{f}$

- a. Row No/Contact No
- b. Contact Plating
 - 0: Gold flash selective gold(standard)
 - 1: 15u' selective gold on contact
 - 2: 30u' selective gold on contact
 - 3: Gold flash Full gold
- c: Contact Direction
 - 0: 180° L:Tail length 0: Use "0" fill
 - 1: 90° L:Tail length S: Row to row sizes
- d: Insulator Color
 - 0: Black(standard)
 - 1: Gray
- e: Contact Material
 - 0: Brass
 - 1: Phosphor Bronze
- f: Option On Ear
 - 0: With mounting ear
 - 1: Without mounting ear

DO NOT SCALE DRAWING

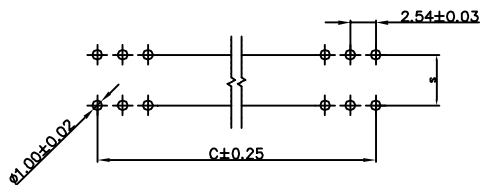
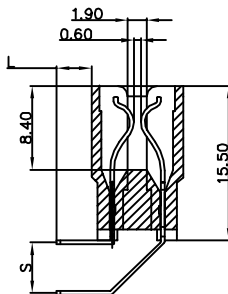
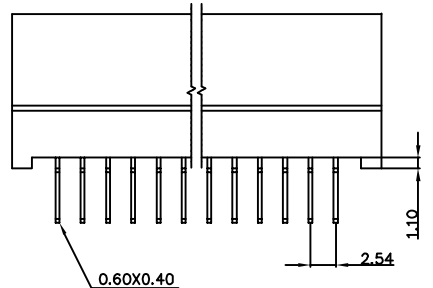
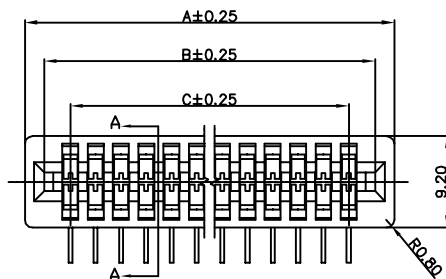
CONTACTS NO	DIM A	DIM B	DIM C	CONTACTS NO	DIM A	DIM B	DIM C	CONTACTS NO	DIM A	DIM B	DIM C
2/4	11.68	7.82	2.54	14/28	42.16	38.30	33.02	32/64	87.88	84.02	78.74
3/6	14.22	10.36	5.08	15/30	44.70	40.84	35.56	35/70	95.50	91.64	86.36
4/8	16.76	12.90	7.62	16/32	47.24	43.38	38.10	36/72	98.04	94.18	88.90
5/10	19.30	15.44	10.16	17/34	49.78	45.92	40.64	40/80	108.20	104.34	99.06
6/12	21.84	17.98	12.70	18/36	52.32	48.46	43.18	43/86	115.82	111.96	106.68
7/14	24.38	20.52	15.24	19/38	54.86	51.00	45.72	49/98	138.68	134.82	129.54
8/16	26.92	23.06	17.78	20/40	57.40	53.54	48.26	50/100	133.60	129.74	124.46
9/18	29.46	25.60	20.32	22/44	62.48	58.62	53.34	54/108	143.76	139.90	134.62
10/20	32.00	28.14	22.86	24/48	67.56	63.70	58.42	60/120	159.00	155.14	149.86
11/22	34.54	30.68	25.40	25/50	70.10	66.24	60.96				
12/24	37.08	33.22	27.94	30/60	82.80	78.94	73.66				
13/26	39.62	35.76	30.48	31/62	85.34	81.48	76.20				

DIMENSIONS: <input type="checkbox"/> MM [INCH] <input type="checkbox"/> INCH [mm] <input checked="" type="checkbox"/> MM ONLY	CAD GENERATED DRAWING, DO NOT MANUALLY UPDATE DRAWN BY AND DATE JUSTIN XING 07-03-06	Y-S ELECTRONIC CO., LTD. No. 101, Sec. 1, Long-An Street, Lu-Chu, Taoyuan, Taiwan, R.O.C. TEL: +886-3-3609819 FAX: +886-3-3609817	
			UNLESS OTHERWISE SPECIFIED, GENERAL TOLERANCE: DECIMALS X: ±0.38 [0.15] ANGLES X°: ±3° .X ±0.25 [0.10] .X°: ±1.0° .XX ±0.13 [0.05]
MATERIAL FINISH	SCALE: 2 : 1 SIZE: A3	DRAWING NO. 134-XXXXXXXXXX FILE NO.	REV A SHEET 1 OF 2

THE INFORMATION CONTAINED IN THIS DOCUMENT IS PROPRIETARY TO Y-S ELECTRONIC, ANY REPRODUCTION IN PART OR WHOLE WITHOUT PRIOR WRITTEN APPROVAL OR AUTHORIZATION OF Y-S ELECTRONIC IS STRICTLY PROHIBITED.

RoHS COMPLIANT

REVISIONS				
REV	ECN NO.	DESCRIPTION	APPROVED BY	DATE



TAIL LENGTH	L	Row To Row	S
A	3.50mm	A	5.08mm
B	6.00mm	B	3.81mm
C	10.80mm	C	3.00mm
		D	2.54mm

INSULATOR
Glass-Filled P.B.T. is 94V-0 rated
CONTACT: Phosphor Bronze or Brass

SPECIFICATION:
Current Rating : 3 amperes
Contact Resistance : 20 miniohms max.
Operation Temperature : -55°C to +105°C
Voltage Rating : 800 VAC 1 minute
Insulation Resistance : 5000 megaohms min.
Insertion Force : 412 grams max. per pair
Withdrawal Force : 32 grams min. per pair

Ordering Information

134 - $\frac{XX}{a} \frac{X}{b} \frac{XXX}{c} \frac{X}{d} \frac{X}{e} \frac{X}{f}$

- a. Row No/Contact No
- b. Contact Plating
 - 0: Gold flash selective gold(standard)
 - 1: 15u' selective gold on contact
 - 2: 30u' selective gold on contact
 - 3: Gold flash Full gold
- c: Contact Direction
 - 0: 180° L:Tail length 0: Use "0" fill
 - 1: 90° L:Tail length S: Row to row sizes
- d: Insulator Color
 - 0: Black(standard)
 - 1: Grey
- e: Contact Material
 - 0: Brass
 - 1: Phosphor Bronze
- f: Option On Ear
 - 0: With mounting ear
 - 1: Without mounting ear

CONTACTS NO.	DIM A	DIM B	DIM C	CONTACTS NO.	DIM A	DIM B	DIM C
2/4	11.68	7.82	2.54	18/36	52.32	48.46	43.18
3/6	14.22	10.36	5.08	19/38	54.86	51.00	45.72
4/8	16.76	12.90	7.62	20/40	57.40	53.54	48.26
5/10	19.30	15.44	10.16	22/44	62.48	58.62	53.34
6/12	21.84	17.98	12.70	24/48	67.56	63.70	58.42
7/14	24.38	20.52	15.24	25/50	70.10	66.24	60.96
8/16	26.92	23.06	17.78	30/60	82.80	78.94	73.66
9/18	29.46	25.60	20.32	31/62	85.34	81.48	76.20
10/20	32.00	28.14	22.86	32/64	87.88	84.02	78.74
11/22	34.54	30.68	25.40	35/70	95.50	91.64	86.36
12/24	37.08	33.22	27.94	36/72	98.04	94.18	88.90
13/26	39.62	35.76	30.48	40/80	108.20	104.34	99.06
14/28	42.16	38.30	33.02	43/86	115.82	111.96	106.68
15/30	44.70	40.84	35.56	49/98	138.68	134.82	129.54
16/32	47.24	43.38	38.10	50/100	133.60	129.74	124.46
17/34	49.78	45.92	40.64	54/108	143.76	139.90	134.62

DO NOT SCALE DRAWING

DIMENSIONS: <input type="checkbox"/> MM [INCH] <input type="checkbox"/> INCH [mm] <input checked="" type="checkbox"/> MM ONLY	CAD GENERATED DRAWING, DO NOT MANUALLY UPDATE DRAWN BY AND DATE JUSTIN XING 07-03-06
UNLESS OTHERWISE SPECIFIED, GENERAL TOLERANCE: DECIMALS X: ±0.38 [0.15] .X: ±0.25 [0.10] .XX: ±0.13 [0.05] ANGLES X°: ±3° .X°: ±1.0°	CHECKED BY AND DATE JUSTIN XING 07-03-06 APPROVED BY AND DATE MICHAEL HUANG 07-03-06 THIRD ANGLE PROJECTION
MATERIAL	
FINISH	SCALE: 2:1 SIZE: A3



Y-S ELECTRONIC CO., LTD.
No. 101, Sec. 1, Long-An Street,
Lu-Chu, Taoyuan, Taiwan, R.O.C.
TEL: +886-3-3609819 FAX: +886-3-3609817

TITLE 134 SERIES EDGE CARD CONNECTOR SLOT 2.54MM (0.100")	
DRAWING NO. 134-XXXXXXXXXX	REV A
FILE NO.	SHEET 2 OF 2