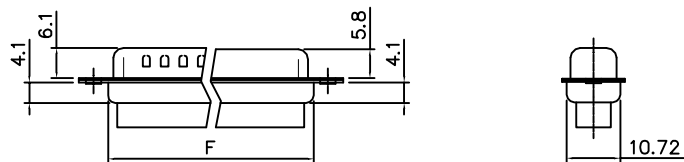
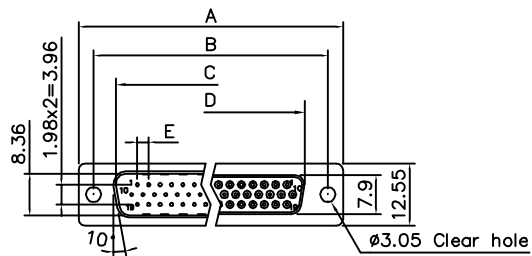


THE INFORMATION CONTAINED IN THIS DOCUMENT IS PROPRIETARY TO Y-S ELECTRONIC. ANY REPRODUCTION IN PART OR WHOLE WITHOUT PRIOR WRITTEN APPROVAL OR AUTHORIZATION OF Y-S ELECTRONIC IS STRICTLY PROHIBITED.

RoHS COMPLIANT

REVISIONS				
REV	ECN NO.	DESCRIPTION	APPROVED BY	DATE



DIMENSION TABLE

POSITIONS	A	B	C	D	E	F
15	30.81	24.99	16.92	16.33	2.29	19.20
26	39.20	33.30	25.25	24.70	2.29	27.70
44	53.05	47.04	38.96	38.40	2.29	41.10
62	69.40	63.50	55.42	54.80	2.41	57.30

Product Specification

Material

Insulator :Glass-Filled Thermoplastic PBT,UL94V-0 rated

Shell : Steel, 100u' Tin Over 50u' min Copper

Clinch Nut: Brass, 100u' min Nickel Plated.

Screwlock :Brass, 100u' min Nickel Plated.

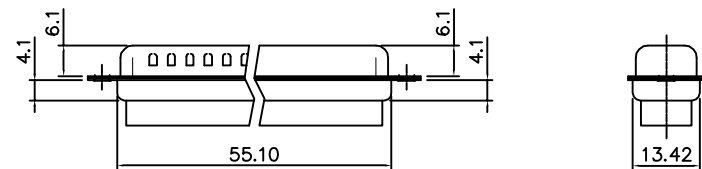
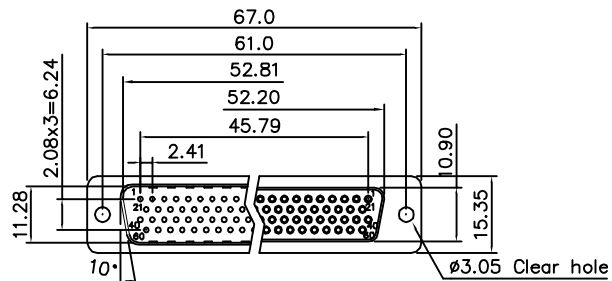
Electrical

Insulation Resistance :1000

megohms at 500 VDC

Dielectric Withstanding Voltage :

1000 VAC/rms 60Hz for 1 minute



78 Positions

DO NOT SCALE DRAWING

DIMENSIONS: <input type="checkbox"/> MM [INCH] <input type="checkbox"/> INCH [mm] <input checked="" type="checkbox"/> MM ONLY	CAD GENERATED DRAWING, DO NOT MANUALLY UPDATE	Y-S ELECTRONIC CO., LTD. No. 101, Sec. 1, Long-An Street, Lu-Chu, Taoyuan, Taiwan, R.O.C. TEL: +886-3-3609819 FAX: +886-3-3609817	
	UNLESS OTHERWISE SPECIFIED, GENERAL TOLERANCE: DECIMALS ANGLES X: ±0.38 [0.015] X°: ±3° .X: ±0.25 [0.010] .X°: ±1.0° .XX: ±0.13 [0.005]		CHECKED BY AND DATE JUSTIN XING 07-03-06
MATERIAL	APPROVED BY AND DATE KING CHIU 07-03-06	DRAWING NO. 106-XXXXXXX	REV A
FINISH	SCALE: 1 : 1	SIZE: A3	FILE NO.: SHEET 1 OF 3

1 2 3 4 5 6 7 8

THE INFORMATION CONTAINED IN THIS DOCUMENT IS PROPRIETARY TO Y-S ELECTRONIC, ANY REPRODUCTION IN PART OR WHOLE WITHOUT PRIOR WRITTEN APPROVAL OR AUTHORIZATION OF Y-S ELECTRONIC IS STRICTLY PROHIBITED.

REVISIONS				
REV	ECN NO.	DESCRIPTION	APPROVED BY	DATE

RoHS COMPLIANT

Ordering Information

106 - $\frac{XX}{a}$ $\frac{X}{b}$ $\frac{X}{c}$ $\frac{X}{d}$ $\frac{X}{e}$ $\frac{X}{f}$

a. No. Of Pins

- 15: 15 positions
- 26: 26 positions
- 44: 44 positions
- 62: 62 positions
- 78: 78 positions

b. Contact Type:

- 1: Male
- 2: Female

d. Shell plating :

- 0. Cr⁺³ yellow chrome
- 1. Nickel (standard)
- 2. Tin
- 3. Cr⁺⁶ yellow chrome
- 4. Tin dimple
- 5. Cr⁺⁶ yellow chrome, dimple
- 6. Tin tab shell ϕ 4.0
- 7. Special tin, dimple
- 8. Tin tab shell, dimple
- 9. Cr⁺³ yellow chrome, dimple

d. Position of Clinch Nut :

- 0: Clear hole ϕ 3.05mm
- 1: Rivet front 5.9mm
- 2: Rear rivet, 5.9mm
- 3: Standoff+2 prong boardlock(6.0*3.2mm)
- A: Front rivet, 2.0mm
- B: Front rivet, 2.5mm
- C: Front rivet, 4.0mm
- D: Rear rivet, 2.0mm
- E: Rear rivet, 2.5mm
- F: Rear rivet, 4.0mm



e. Flange Mounting Option :

- 0: Clear hole ϕ 3.05mm
- 1: #4-40 threaded hole
- 2: #4-40 threaded hole with #4-40 unc(5*10mm) screwlock installed
- 3: #4-40 threaded hole with #4-40 unc(5*10mm) screwlock bulk-packed
- 4: M3 threaded hole
- 5: #4-40 threaded hole with M3(5*10mm) screwlock installed
- 6: M2.6 threaded hole
- 7: #4-40 threaded hole with M2.6(5.8*10.8mm) screwlock installed
- 8: #4-40 threaded hole with #4-40 unc(5.8*10.8mm) screwlock installed
- 9: #4-40 threaded hole with M3(5.8*10.8mm) screwlock installed

f. Pin Removal Options

- X: Pin #9 removed
- Y: Pin #4 and #9 removed
- Z: Pin #4, #9 and #11 removed
- B: Pin #4, #5, #9, removed

DO NOT SCALE DRAWING

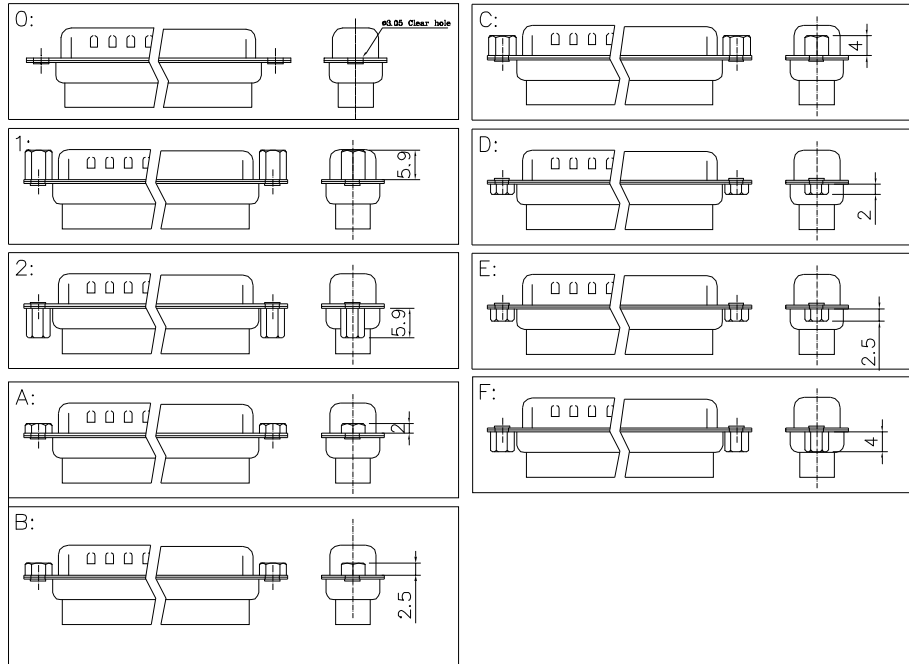
DIMENSIONS: <input type="checkbox"/> MM [INCH] <input type="checkbox"/> INCH [MM] <input checked="" type="checkbox"/> MM ONLY		CAD GENERATED DRAWING, DO NOT MANUALLY UPDATE DRAWN BY AND DATE JUSTIN XING 17-20-06		 Y-S ELECTRONIC CO., LTD. No. 101, Sec. 1, Long-An Street, Lu-Chu, Taoyuan, Taiwan, R.O.C. TEL: +886-3-3609819 FAX: +886-3-3609817
UNLESS OTHERWISE SPECIFIED, GENERAL TOLERANCE: DECIMALS ANGLES .X ±0.38 [0.015] X° ±3° .X ±0.25 [0.010] .X° ±1.0° .XX ±0.13 [0.005]		CHECKED BY AND DATE JUSTIN XING 07-20-06 APPROVED BY AND DATE KING CHIU 07-20-06 THIRD ANGLE PROJECTION		
MATERIAL FINISH				TITLE 106 SERIES D-SUB H.D. CRIMP TYPE
		SCALE: 1:1 SIZE: A3		
DRAWING NO. 106-XXXXXXX			REV B	FILE NO.: SHEET 2 OF 3

THE INFORMATION CONTAINED IN THIS DOCUMENT IS PROPRIETARY TO Y-S ELECTRONIC. ANY REPRODUCTION IN PART OR WHOLE WITHOUT PRIOR WRITTEN APPROVAL OR AUTHORIZATION OF Y-S ELECTRONIC IS STRICTLY PROHIBITED.


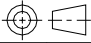
RoHS COMPLIANT

REVISIONS				
REV	ECN NO.	DESCRIPTION	APPROVED BY	DATE

d: Position of Clinch Nut



DO NOT SCALE DRAWING

DIMENSIONS: <input type="checkbox"/> MM [INCH] <input type="checkbox"/> INCH [mm] <input checked="" type="checkbox"/> MM ONLY	CAD GENERATED DRAWING, DO NOT MANUALLY UPDATE	 Y-S ELECTRONIC CO., LTD. No. 101, Sec. 1, Long-An Street, Lu-Chu, Taoyuan, Taiwan, R.O.C. TEL: +886-3-3609819 FAX: +886-3-3609817		
	UNLESS OTHERWISE SPECIFIED, GENERAL TOLERANCE: DECIMALS ANGLES X: ±0.38 [0.015] X°: ±3° .X: ±0.25 [0.010] .X°: ±1.0° .XX: ±0.13 [0.005]		DRAWN BY AND DATE JUSTIN XING 07-03-06 CHECKED BY AND DATE JUSTIN XING 07-03-06 APPROVED BY AND DATE KING CHIU 07-03-06 THIRD ANGLE PROJECTION 	TITLE 106 SERIES D-SUB H.D. CRIMP TYPE
MATERIAL	SCALE: 1 : 1	SIZE: A3	DRAWING NO. 106-XXXXXXX	REV A
FINISH	FILE NO.		SHEET 3 OF 3	