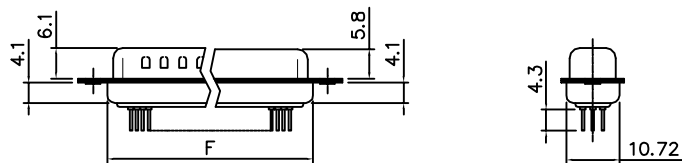
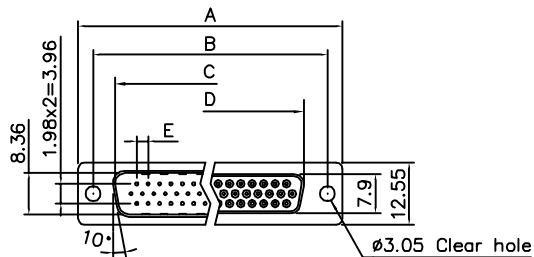


THE INFORMATION CONTAINED IN THIS DOCUMENT IS PROPRIETARY TO Y-S ELECTRONIC, ANY REPRODUCTION IN PART OR WHOLE WITHOUT PRIOR WRITTEN APPROVAL OR AUTHORIZATION OF Y-S ELECTRONIC IS STRICTLY PROHIBITED.

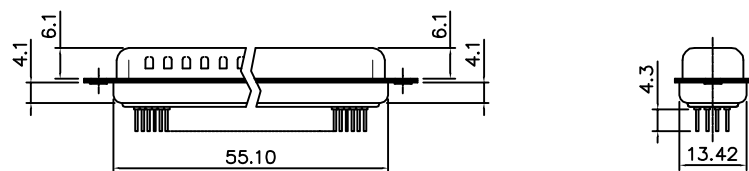
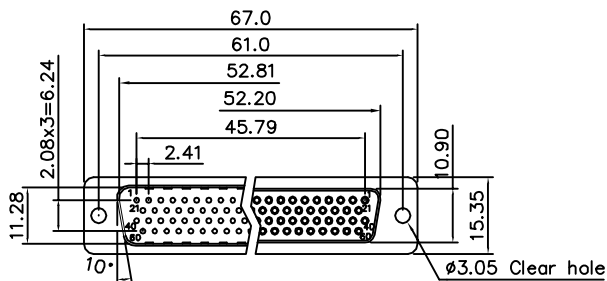
RoHS COMPLIANT

REVISIONS				
REV	ECN NO.	DESCRIPTION	APPROVED BY	DATE



DIMENSION TABLE

POSITIONS	A	B	C	D	E	F
15	30.81	24.99	16.92	16.33	2.29	19.20
26	39.20	33.30	25.25	24.70	2.29	27.70
44	53.05	47.04	38.96	38.40	2.29	41.10
62	69.40	63.50	55.42	54.80	2.41	57.30



78 Positions

Product Specification


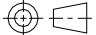
Material

Insulator :Glass-Filled Thermoplastic PBT,UL94V-0 rated
 Contact :Brass
 Shell : Steel, 100u" Tin Over 50u" min Copper
 Clinch Nut: Brass, 100u" min Nickel Plated.
 Screwlock :Brass, 100u" min Nickel Plated.

Electrical

Contact Resistance :20 milliohms
 Max at 1 AMP DC.
 Insulation Resistance :1000
 megohms at 500 VDC
 Dielectric Withstanding Voltage :
 1000 VAC/rms 60Hz for 1 minute
 Current Rating :3 AMP
 Volatge Rating :250 VAC/rms 60Hz

DO NOT SCALE DRAWING

DIMENSIONS: <input type="checkbox"/> MM [INCH] <input type="checkbox"/> INCH [mm] <input checked="" type="checkbox"/> MM ONLY	CAD GENERATED DRAWING, DO NOT MANUALLY UPDATE DRAWN BY AND DATE JUSTIN XING 07-03-06	 Y-S ELECTRONIC CO., LTD. No. 101, Sec. 1, Long-An Street, Lu-Chu, Taoyuan, Taiwan, R.O.C. TEL: +886-3-3609819 FAX: +886-3-3609817	
	UNLESS OTHERWISE SPECIFIED, GENERAL TOLERANCE: DECIMALS ANGLES .X ±0.38 [0.015] X° ±3° .X ±0.25 [0.010] .X° ±1.0° .XX ±0.13 [0.005]		CHECKED BY AND DATE JUSTIN XING 07-03-06 APPROVED BY AND DATE KING CHIU 07-03-06 THIRD ANGLE PROJECTION
MATERIAL		DRAWING NO. 105-XXXXXXXXXX	REV A
FINISH	SCALE: 1 : 1 SIZE: A3	FILE NO.	SHEET 1 OF 4

1 THE INFORMATION CONTAINED IN THIS DOCUMENT IS PROPRIETARY TO Y-S ELECTRONIC, ANY REPRODUCTION IN PART OR WHOLE WITHOUT PRIOR WRITTEN APPROVAL OR AUTHORIZATION OF Y-S ELECTRONIC IS STRICTLY PROHIBITED.

2 **RoHS COMPLIANT**

3 Ordering Information

4 105 - $\frac{XX}{a} \frac{X}{b} \frac{X}{c} \frac{X}{d} \frac{X}{e} \frac{X}{f} \frac{X}{g} \frac{X}{h} \frac{X}{i}$

REVISIONS				
REV	ECN NO.	DESCRIPTION	APPROVED BY	DATE

5 a. No. of Contacts:

- 15: 15 positions
- 26: 26 positions
- 44: 44 positions
- 62: 62 positions
- 78: 78 positions

6 b. Contact Type

- 1: Male
- 2: Female

7 c. Contact Plating

- 0: Gold flash selective gold(standard)
- 1: 5u" selective gold on contact
- 2: 10u" selective gold on contact
- 3: 15u" selective gold on contact
- 4: 30u" selective gold on contact
- 5: 50u" selective gold on contact
- 6: Full gold flash
- 7: 8u" gold flash full gold
- 8: Full tin
- 9: matte tin selective gold
- A: 30u"matte tin selective gold
- B: 15u"matte tin selective gold

8 d. Shell plating :

- 0. Cr⁺³yellow chrome
- 1. Nickel(standard)
- 2. Tin
- 3. Cr⁺⁶yellow chrome
- 4. Gold flash
- 5. Tin, not dimple
- 6. Cr⁺⁶yellow chrome, dimple
- 7. Tin tab shell dimple
- 8. Special tin, dimple
- 9. Cr⁺³yellow chrome, dimple
- A. Matte tin
- B. tin, L Type
- C. Tin(With Y-S Logo)

9 e. Insulator Color

- 1:Blue
- 2:Black
- 3:White
- 4:Gray
- 5:PC99 blue
- 6:Black square
- 7.PC99 blue
- 8.PC99 green
- 9.PC99 yellow
- A:Black(high temperature)
- B:Blue(high temperature)

10 f. Position of Clinch Nut :

- 0:Clear hole ϕ 3.05mm
- 1:Front rivet 5.9mm
- 2:Rear rivet, 5.9mm
- 3:Rivet+2 prong boardlock6.0*3.2mm
- 4:Single rivet(front rivet, 5.9mm)
- 5:Rivet+4 prong boardlock6.0*3.2mm
- 6:Rivet+2 prong boardlock6.0*3.2mm ("-" font chimb)
- A:Front rivet, 2.0mm
- B:Front rivet, 2.5mm
- C:Front rivet, 4.0mm
- D:Rear rivet, 2.0mm
- E:Rear rivet, 2.5mm
- F:Rear rivet, 4.0mm
- G:Rivet+2 prong boardlock6.0*3.0mm
- H:Rivet+2 prong boardlock6.0*3.3mm
- I:Rivet+2 prong boardlock7.3*3.2mm
- J:Rear rivet, 3.5mm
- K:Rivet+2 prong boardlock6.6*3.2mm
- L:Rivet+2 prong boardlock7.0*3.2mm
- M:Rivet+2 prong boardlock5.0*3.2mm
- N:Rivet+2 prong boardlock6.0*3.85mm

11 g. Flange Mounting Option :

- 0: ϕ 3.05mm clear hole
- 1:#4-40 threaded hole
- 2:#4-40 threaded hole with #4-40 unc(5*10mm)screwlock installed
- 3:#4-40 threaded hole with #4-40 unc(5*10mm)screwlock bulk-packed
- 4:M3 threaded hole
- 5:#4-40 threaded hole with M3(5*10mm)screwlock installed
- 6:M2.6 threaded hole
- 7:#4-40 threaded hole with M2.6(5*10mm)screwlock installed
- 8:#4-40 Threaded Hole(half hole)
- A:#4-40 threaded hole +2 prong boardlock screw:4.75*13.0mm screwlock installed
- B:#4-40 threaded hole with #4-40 unc(5.8*10.8mm)screwlock installed
- C:#4-40 threaded hole with M3(5.8*10.8mm)screwlock installed
- D:#4-40 threaded hole with #4-40 unc(5.5*10.0mm)screwlock installed
- E:#4-40 threaded hole with #4-40 unc(5.8*10.8mm)"-" font screwlock bulk-packed
- F:#4-40 threaded hole with #4-40 unc(5.8*10.8mm)"-" font screwlock installed


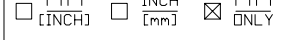
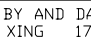
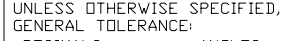
12 h. Contact Type :

- 0:Machined pin:8.0mm
- 1:Stamped pin:4.3mm
- 2:Machined pin
- 3:Stamped short pin:3.2mm
- 4:Stamped short pin:2.4mm
- 5:Machined pin:11.2mm
- 6:Stamped pin:4.1mm
- 7:Machined pin:13.0mm
- Z:Stamped pin:4.3mm; 44pin: wanting 13, 28, 42pin
- 8:Machined pin:5.5mm
- 9:Stamped pin:2.0mm
- A:Stamped pin:4.8mm
- B:Stamped pin:3.05mm
- Y:Mix pin:4.3mm; 26pin: wanting 5, 6, 7, 8, 9, 14, 23, 24, 25, 26pin

13 i. Ferrite :

- 0. Without ferrite
- 1. With ferrite

DO NOT SCALE DRAWING

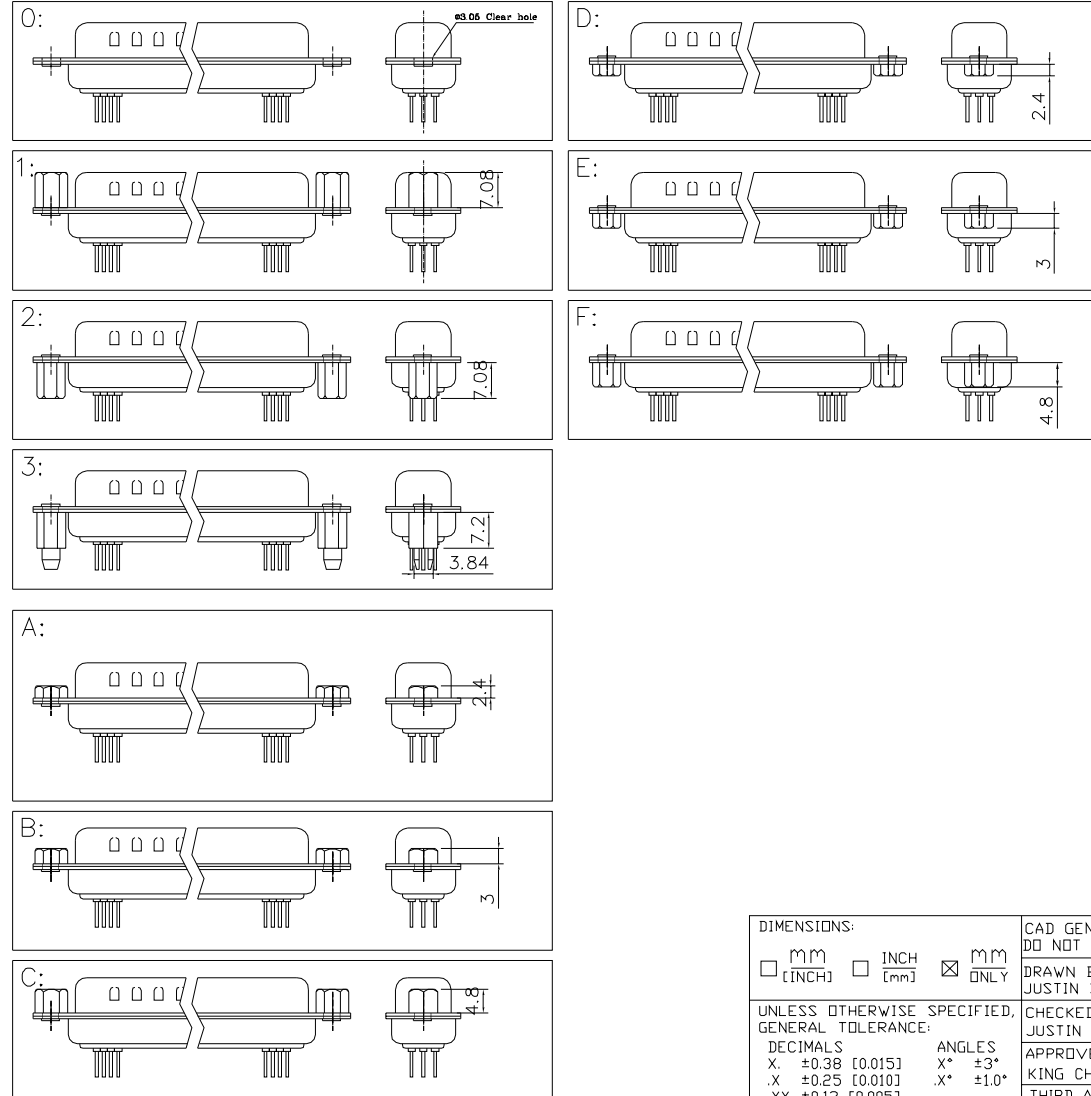
DIMENSIONS: <input type="checkbox"/> MM [INCH] <input type="checkbox"/> INCH [MM] <input checked="" type="checkbox"/> MM ONLY		CAD GENERATED DRAWING, DO NOT MANUALLY UPDATE DRAWN BY AND DATE JUSTIN XING 17-20-06	 Y-S ELECTRONIC CO., LTD. No. 101, Sec. 1, Long-An Street, Lu-Chu, Taoyuan, Taiwan, R.O.C. TEL: +886-3-3609819 FAX: +886-3-3609817
UNLESS OTHERWISE SPECIFIED, GENERAL TOLERANCE: DECIMALS ANGLES X. ±0.38 [0.015] X° ±3° .X ±0.25 [0.010] .X° ±1.0° .XX ±0.13 [0.005]		CHECKED BY AND DATE JUSTIN XING 07-20-06 APPROVED BY AND DATE KING CHIU 07-20-06 THIRD ANGLE PROJECTION	
MATERIAL: 			TITLE 105 SERIES D-SUB HD DIP STRAIGHT TYPE
FINISH: 		SCALE: 1 : 1 SIZE: A3	DRAWING NO. 105-XXXXXXXXXX REV C FILE NO.: SHEET 2 OF 4

THE INFORMATION CONTAINED IN THIS DOCUMENT IS PROPRIETARY TO Y-S ELECTRONIC. ANY REPRODUCTION IN PART OR WHOLE WITHOUT PRIOR WRITTEN APPROVAL OR AUTHORIZATION OF Y-S ELECTRONIC IS STRICTLY PROHIBITED.


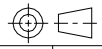
REV	ECN NO.	DESCRIPTION	APPROVED BY	DATE

RoHS COMPLIANT

f: Position of Clinch Nut



DO NOT SCALE DRAWING

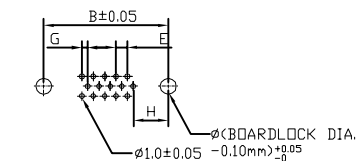
DIMENSIONS: <input type="checkbox"/> MM [INCH] <input type="checkbox"/> INCH [mm] <input checked="" type="checkbox"/> MM ONLY		CAD GENERATED DRAWING, DO NOT MANUALLY UPDATE DRAWN BY AND DATE JUSTIN XING 07-03-06		 Y-S ELECTRONIC CO., LTD. No. 101, Sec. 1, Long-An Street, Lu-Chu, Taoyuan, Taiwan, R.O.C. TEL: +886-3-3609819 FAX: +886-3-3609817	
UNLESS OTHERWISE SPECIFIED, GENERAL TOLERANCE: DECIMALS ANGLES X: ±0.38 [0.015] X° ±3° .X ±0.25 [0.010] .X° ±1.0° .XX ±0.13 [0.005]		CHECKED BY AND DATE JUSTIN XING 07-03-06 APPROVED BY AND DATE KING CHIU 07-03-06 THIRD ANGLE PROJECTION			TITLE <p style="text-align: center;">105 SERIES D-SUB HD DIP STRAIGHT TYPE</p>
MATERIAL FINISH				DRAWING NO. <p style="text-align: center;">105-XXXXXXXXXX</p>	REV <p style="text-align: center;">A</p>
SCALE: 1 : 1		SIZE: A3		FILE NO.	SHEET 3 OF 4

THE INFORMATION CONTAINED IN THIS DOCUMENT IS PROPRIETARY TO Y-S ELECTRONIC. ANY REPRODUCTION IN PART OR WHOLE WITHOUT PRIOR WRITTEN APPROVAL OR AUTHORIZATION OF Y-S ELECTRONIC IS STRICTLY PROHIBITED.

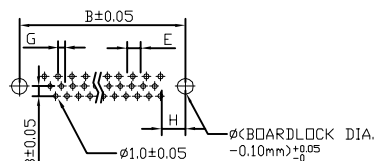
RoHS COMPLIANT

REVISIONS				
REV	ECN NO.	DESCRIPTION	APPROVED BY	DATE

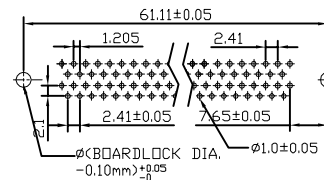
P.C.B LAYOUT PATTERN



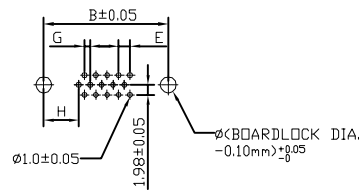
15 POSITION FEMALE



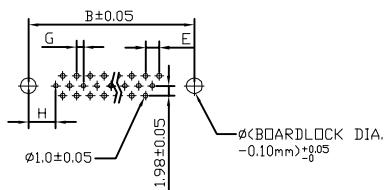
26,44,62 POSITION FEMALE



78 POSITION MALE/FEMALE



15 POSITION MALE



26,44,62 POSITION MALE

Positions	G	H
15M/F	1.145	7.04
26M/F	1.145	6.88
44M/F	1.145	6.88
62M/F	1.205	7.00

DO NOT SCALE DRAWING

DIMENSIONS: <input type="checkbox"/> MM [INCH] <input type="checkbox"/> INCH [mm] <input checked="" type="checkbox"/> MM ONLY		CAD GENERATED DRAWING, DO NOT MANUALLY UPDATE DRAWN BY AND DATE JUSTIN XING 07-03-06	
UNLESS OTHERWISE SPECIFIED, GENERAL TOLERANCE: DECIMALS ANGLES .X ±0.38 [0.015] X° ±3° .XX ±0.25 [0.010] .X° ±1.0° .XX ±0.13 [0.005]		CHECKED BY AND DATE JUSTIN XING 07-03-06 APPROVED BY AND DATE KING CHIU 07-03-06 THIRD ANGLE PROJECTION	
MATERIAL			
FINISH			
SCALE: 1 : 1		SIZE: A3	



Y-S ELECTRONIC CO., LTD.
 No. 101, Sec. 1, Long-An Street,
 Lu-Chu, Taoyuan, Taiwan, R.O.C.
 TEL: +886-3-3609819 FAX: +886-3-3609817

TITLE		105 SERIES D-SUB HD DIP STRAIGHT TYPE
DRAWING NO.		
105-XXXXXXXXXX		REV A
FILE NO.		SHEET 4 OF 4