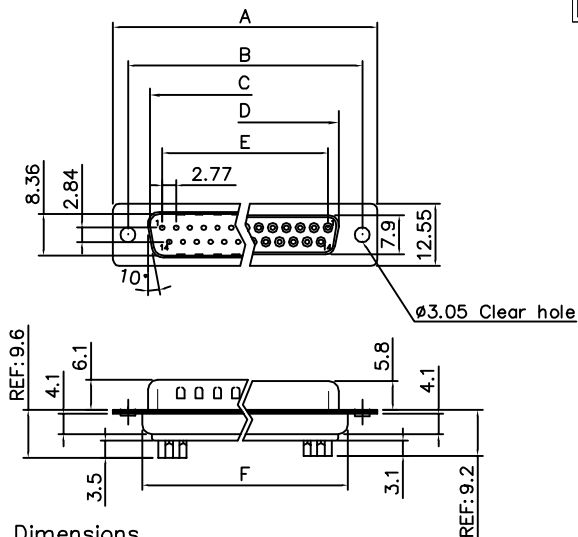


THE INFORMATION CONTAINED IN THIS DOCUMENT IS PROPRIETARY TO Y-S ELECTRONIC. ANY REPRODUCTION IN PART OR WHOLE WITHOUT PRIOR WRITTEN APPROVAL OR AUTHORIZATION OF Y-S ELECTRONIC IS STRICTLY PROHIBITED.

RoHS COMPLIANT

REVISIONS				
REV	ECN NO.	DESCRIPTION	APPROVED BY	DATE



Dimensions

Positions	A	B	C	D	E	F
9	30.81	24.99	16.92	16.33	11.08	19.20
15	39.20	33.30	25.25	24.70	19.39	27.70
25	53.05	47.04	38.96	38.40	33.24	41.10
37	69.40	63.50	55.42	54.80	49.86	57.30

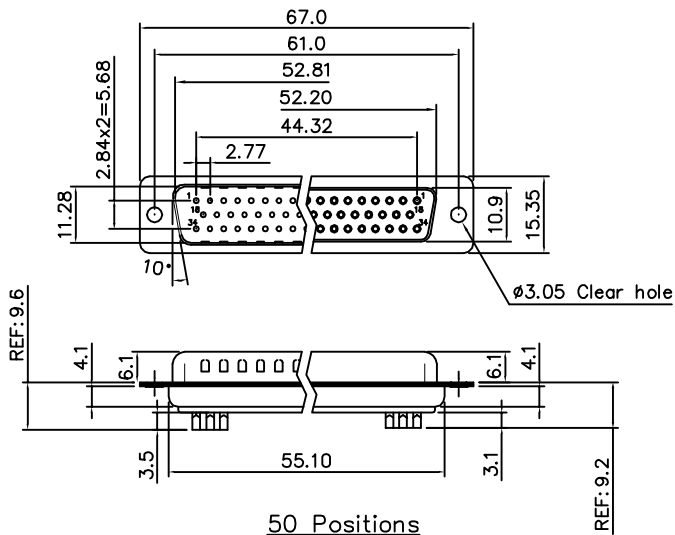
Product Specification

Material

Insulator : Glass-Filled Thermoplastic PBT,UL94V-0  
 Contact : Brass  
 Shell : Steel, 100u" Tin Over 50u" min Copper  
 Clinch Nut : Brass, Nickel Plated  
 Boardlock : Brass, Tin Plated  
 Screwlock : Brass, Nickel Plated

Electrical

Contact Resistance : 20 milliohms  
 Max at 1 AMP DC.  
 Insulation Resistance : 1000  
 megohms at 500 VDC  
 Dielectric Withstanding Voltage :  
 1000 VAC/rms 60Hz for 1 minute  
 Current Rating : 3 AMP  
 Voltage Rating : 250 VAC/rms 60Hz



50 Positions

DIMENSIONS:	
<input type="checkbox"/> MM [INCH]	<input type="checkbox"/> INCH [mm]
<input type="checkbox"/> MM ONLY	<input checked="" type="checkbox"/> MM ONLY
UNLESS OTHERWISE SPECIFIED, GENERAL TOLERANCE:	
DECIMALS	ANGLES
X: ±0.38 [0.015]	X°: ±3°
.X: ±0.25 [0.010]	.X°: ±1.0°
.XX: ±0.13 [0.005]	
MATERIAL	
FINISH	

CAD GENERATED DRAWING, DO NOT MANUALLY UPDATE	
DRAWN BY AND DATE	JUSTIN XING 11-21-05
CHECKED BY AND DATE	JUSTIN XING 11-21-05
APPROVED BY AND DATE	KING CHIU 11-21-05
THIRD ANGLE PROJECTION	
SCALE:	1 : 1
SIZE:	A3



**Y-S ELECTRONIC CO., LTD.**  
 No. 101, Sec. 1, Long-An Street,  
 Lu-Chu, Taoyuan, Taiwan, R.O.C.  
 TEL: +886-3-3609819 FAX: +886-3-3609817

TITLE	
100 SERIES D-SUB SOLDER TYPE	
DRAWING NO.	REV
100-XXXXXXXXXX	A
FILE NO.	SHEET 1 OF 3

DO NOT SCALE DRAWING

THE INFORMATION CONTAINED IN THIS DOCUMENT IS PROPRIETARY TO Y-S ELECTRONIC. ANY REPRODUCTION IN PART OR WHOLE WITHOUT PRIOR WRITTEN APPROVAL OR AUTHORIZATION OF Y-S ELECTRONIC IS STRICTLY PROHIBITED.

**RoHS COMPLIANT**

Ordering Information

100 -  $\frac{XX}{a}$   $\frac{X}{b}$   $\frac{X}{c}$   $\frac{X}{d}$   $\frac{X}{e}$   $\frac{X}{f}$   $\frac{X}{g}$   $\frac{X}{h}$   $\frac{X}{i}$   $\frac{X}{j}$   $\frac{X}{k}$

REVISIONS				
REV	ECN NO.	DESCRIPTION	APPROVED BY	DATE

**a.No.Of Pins**

- 09: 09 positions
- 15: 15 positions
- 25: 25 positions
- 37: 37 positions
- 50: 50 positions

**b.Contact Type:**

- 1:Male
- 2:Female

**c.Contact Plating :**

- 0.Gold flash selective gold
- 1.5u"selective gold on contact
- 2.10u"selective gold on contact
- 3.15u"selective gold on contact
- 4.30u"selective gold on contact
- 5.50u"selective gold on contact
- 6.Gold flash full gold
- 7.Gold flash full gold 8U"
- 8. Tin Full

**d.Shell plating :**

- 0. Cr<sup>+3</sup>yellow chrome
- 1.Nickel(standard)
- 2.Tin
- 3.Cr<sup>+6</sup>yellow chrome
- 4.Gold flash
- 5.Tin, No dimple
- 6.Cr<sup>+6</sup>yellow chrome,dimple
- 7.Tin tab shell, dimple
- 8.Thickness Assigned of tin plating, dimple
- 9. Cr<sup>+3</sup>yellow chrome, dimple
- A. Nickel, UL&CSA logo
- B. Front Gold&Rear Tin
- C.Thickness Assigned of Front Nickel+Rear Tin Plating,dimple
- D.Tin tab shell,UL&CSA logo

- E. All plastic
- F. Tin , UL logo
- G. Nickel , No dimple

**e. Insulator Color :**

- 1:Blue
- 2:Black(standard)
- 3:White
- 4:Gray
- 5:Green
- 6:Pc99 blue
- 7.Pc99 green
- 8.Pc99 yellow
- 9:Black(high temperature)

**f.Position of clinch nut(reffer ot page 3/4 for detail)**

- 0.Clear hole  $\varnothing$ 3.05mm
- 1.Front rivet, 5.9mm
- 2.Rear rivet, 5.9mm
- 3.Rivet+2 prong boardlock6.0\*3.2mm
- 4.Front rivet,2.0mm
- 5.Front rivet,2.5mm
- 6.Front rivet,4.0mm
- 7.Rear rivet, 2.0mm
- 8.Rear rivet, 2.5mm
- 9.Rear rivet, 4.0mm
- A.Front rivet,5.0mm
- B.Rear rivet,5.0mm
- C.Float rivet

**g.Flange Mounting Option**

- 0. $\varnothing$ 3.05mm clear hole
- 1. #4-40 threaded hole
- 2. #4-40 threaded hole with #4-40 unc(5\*10mm)screwlock installed
- 3. #4-40 threaded hole wite #4-40 unc(5\*10mm)screwlock bulk-packed
- 4. M3 threaded hole
- 5. #4-40 threaded hole with M3(5\*10mm)screwlock installed
- 6. M2.6 threaded hole
- 7. #4-40 threaded hole with M2.6(5\*10mm)screwlock installed
- 8. #4-40unc serewlock(4.75\*7.5mm, half hole)
- 9. #4-40 threaded hole with #4-40 unc(4.8\*10.0mm)screwlock installed
- A. #4-40 threaded hole with #4-40 unc(5.8\*10.8mm)screwlock installed
- B. #4-40 threaded hole with M3(5.8\*10.8mm)screwlock installed
- C.#4-40 threaded hole with screw locking type with round #4-40 unc(6.1\*11.94mm)
- D. #4-40 threaded hole with #4-40 unc(4.8\*11.8mm)screwlock bulk-packed
- E. M2.6 serewlock(4.75\*7.5mm, half hole)
- F. #2-56 serewlock(4.75\*7.5mm, half hole)

**h. Pin type**

- 1. Stamped pin
- 2. Machined pin
- 3. Stamped pin+recessed 18-25pin
- 4. Machined pin+recessed
- 5. Stamped pin PIN+2-8,20-22pin No Short ,Ather short.
- 6. Stamped pin+1-8,20-22pin No Short,Ather short.
- 7. Stamped pin+2-8,20-22pin No Short,Ather Short.

**i.Ferrite :**

- 0.Without ferrite
- 1.With ferrite

**j. Insulator type**

- N:Economical type

**k.Pin Removal Options**

- X: Pin #9 removed
- Y: Pin #4 and #9 removed
- Z: Pin #4, #9 and #11 removed
- B: Pin #17, #18, #38, #39 and #59 removed
- V: Pin #1removed

DO NOT SCALE DRAWING

DIMENSIONS: <input type="checkbox"/> MM [INCH] <input type="checkbox"/> INCH [mm] <input checked="" type="checkbox"/> MM ONLY	CAD GENERATED DRAWING, DO NOT MANUALLY UPDATE DRAWN BY AND DATE JUSTIN XING 11-21-05
	CHECKED BY AND DATE JUSTIN XING 11-21-05 APPROVED BY AND DATE KING CHIU 11-21-05 THIRD ANGLE PROJECTION
UNLESS OTHERWISE SPECIFIED, GENERAL TOLERANCE: DECIMALS                      ANGLES .X $\pm$ 0.38 [0.015]            X° $\pm$ 3° .X $\pm$ 0.25 [0.010]            .X° $\pm$ 10° .XX $\pm$ 0.13 [0.005]	TITLE 100 SERIES D-SUB SOLDER TYPE
MATERIAL FINISH	DRAWING NO. 100-XXXXXXXXXX      REV D
SCALE: 1 : 1                      SIZE: A3	FILE NO.:                      SHEET 2 OF 3



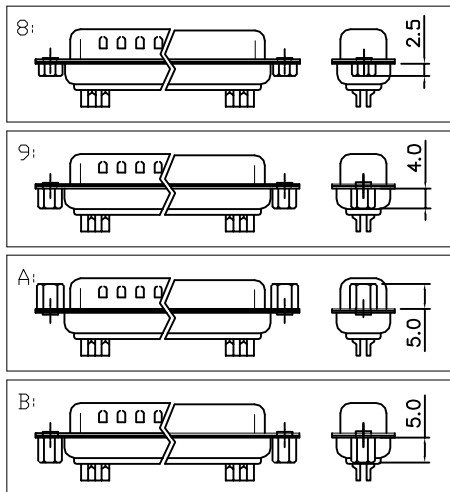
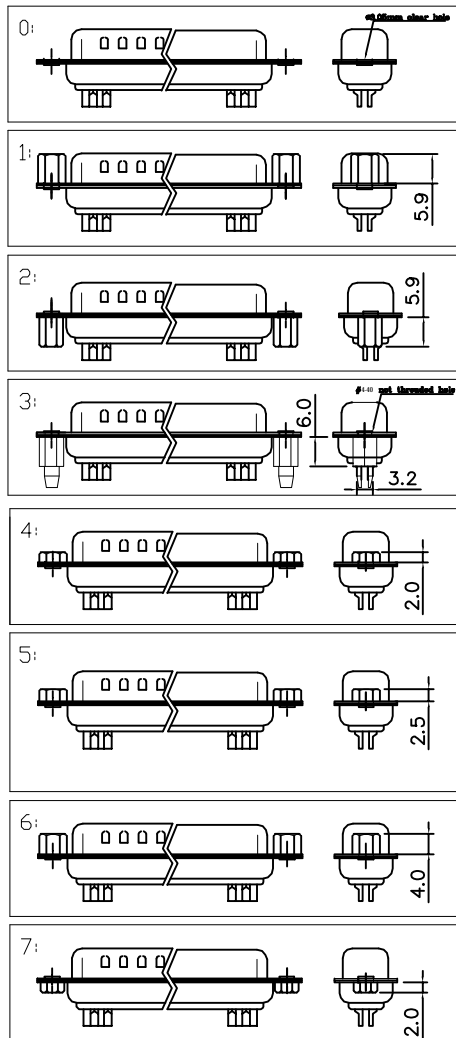
**Y-S ELECTRONIC CO., LTD.**  
 No. 101, Sec. 1, Long-An Street,  
 Lu-Chu, Taoyuan, Taiwan, R.O.C.  
 TEL: +886-3-3609819 FAX: +886-3-3609817

THE INFORMATION CONTAINED IN THIS DOCUMENT IS PROPRIETARY TO Y-S ELECTRONIC. ANY REPRODUCTION IN PART OR WHOLE WITHOUT PRIOR WRITTEN APPROVAL OR AUTHORIZATION OF Y-S ELECTRONIC IS STRICTLY PROHIBITED.

RoHS COMPLIANT

REVISIONS				
REV	ECN NO.	DESCRIPTION	APPROVED BY	DATE

f:Position of Clinch Nut



CONSULT SALES OR FACTORY FOR OTHER MOUNTING STYLE OPTIONS

DO NOT SCALE DRAWING

DIMENSIONS: <input type="checkbox"/> MM [INCH] <input type="checkbox"/> INCH [mm] <input checked="" type="checkbox"/> MM ONLY		CAD GENERATED DRAWING, DO NOT MANUALLY UPDATE DRAWN BY AND DATE JUSTIN XING 11-21-05		<b>Y-S ELECTRONIC CO., LTD.</b> No. 101, Sec. 1, Long-An Street, Lu-Chu, Taoyuan, Taiwan, R.O.C. TEL: +886-3-3609819 FAX: +886-3-3609817	
UNLESS OTHERWISE SPECIFIED, GENERAL TOLERANCE: DECIMALS      ANGLES .X ±0.38 [0.015]    X° ±3° .X ±0.25 [0.010]    .X° ±1.0° .XX ±0.13 [0.005]		CHECKED BY AND DATE JUSTIN XING 11-21-05 APPROVED BY AND DATE KING CHIU 11-21-05 THIRD ANGLE PROJECTION			TITLE 100 SERIES D-SUB SOLDER TYPE
MATERIAL FINISH		SCALE: 1 : 1      SIZE: A3		DRAWING NO. 100-XXXXXXXXXX	REV A
				FILE NO.:      SHEET 3 OF 3	